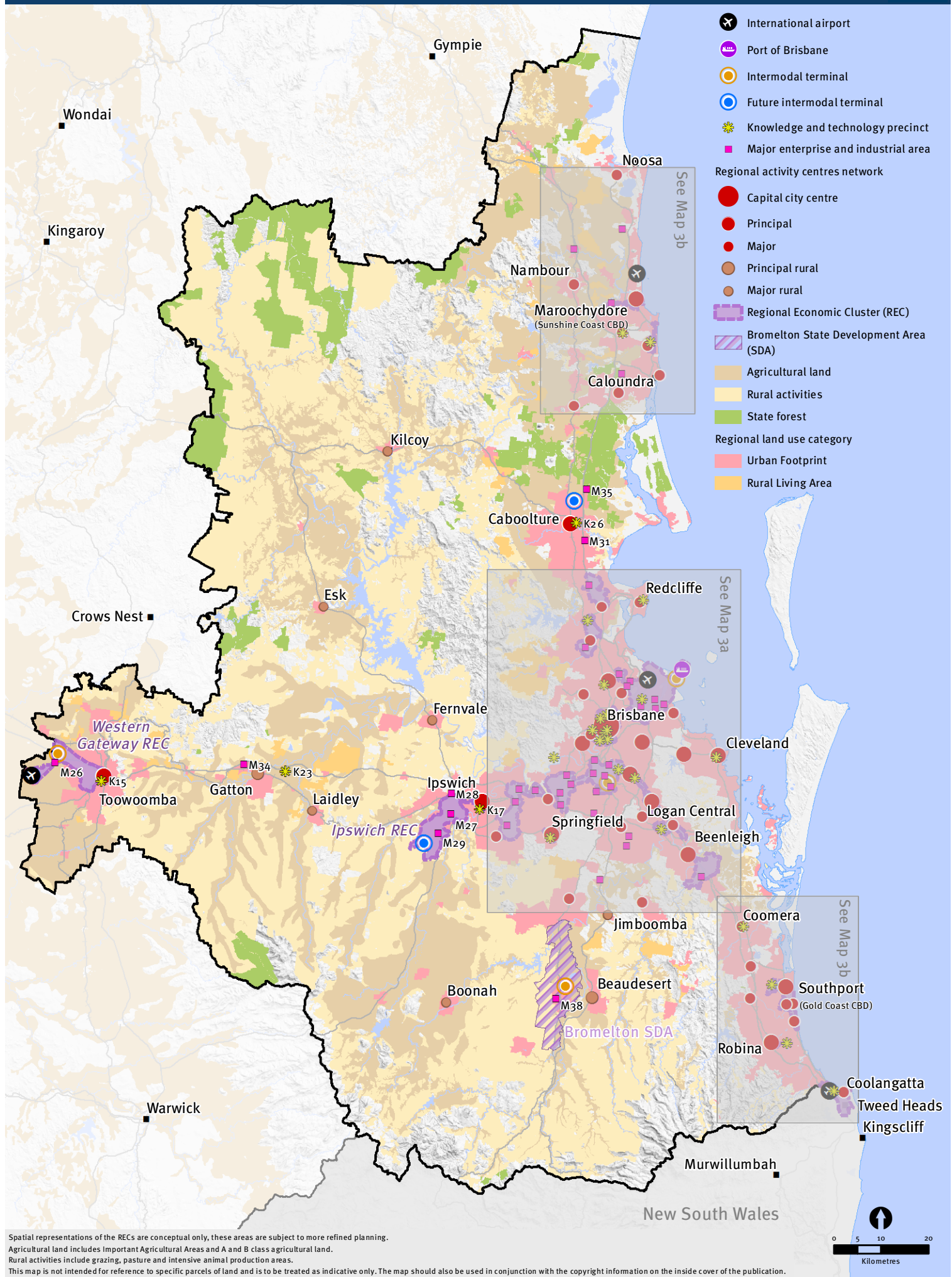


Map 3: Prosper - Economic areas

ShapingSEQ - August 2017



Spatial representations of the RECs are conceptual only, these areas are subject to more refined planning.

Agricultural land includes Important Agricultural Areas and A and B class agricultural land.

Rural activities include grazing, pasture and intensive animal production areas.

This map is not intended for reference to specific parcels of land and is to be treated as indicative only. The map should also be used in conjunction with the copyright information on the inside cover of the publication.