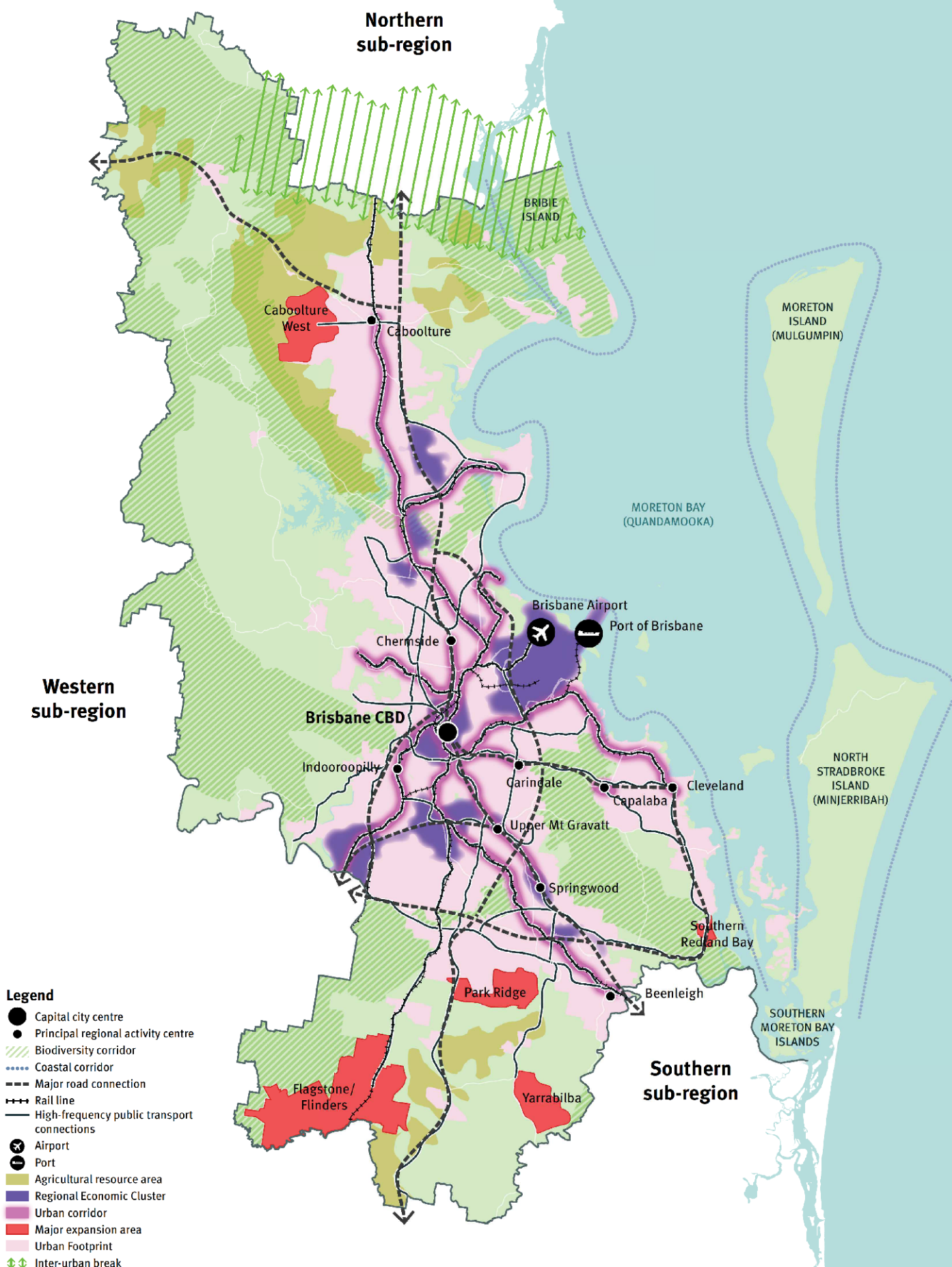


Figure 23: The Metro sub-region

ShapingSEQ - August 2017



This figure represents some of the outcomes of the sub-regional directions at a conceptual level at 2041. This figure does not apply in development assessment. It is intended that local government planning schemes will provide more refined planning for the matters shown on this figure, and any differences arising from that refined planning will not result in the planning scheme being inconsistent with this figure.