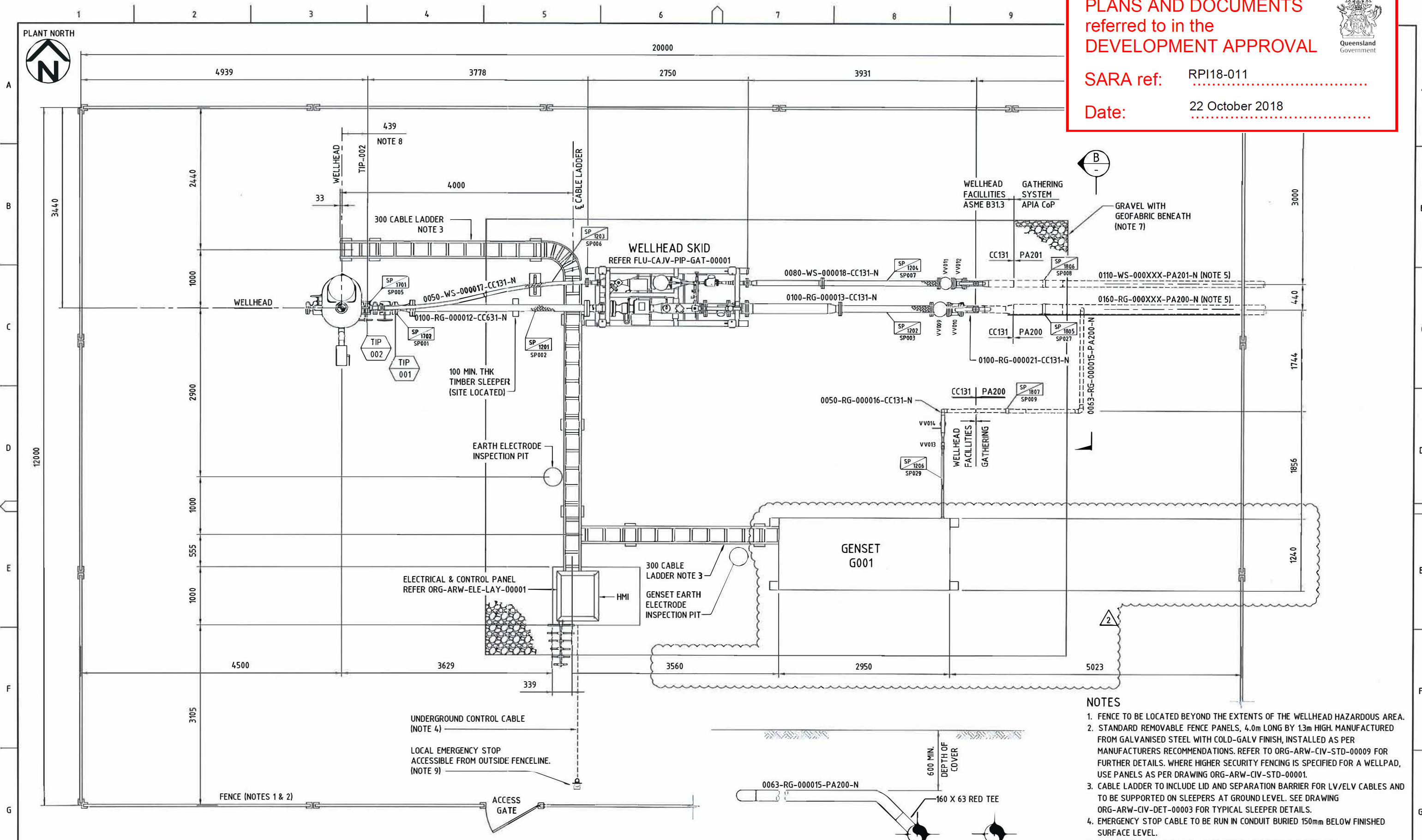


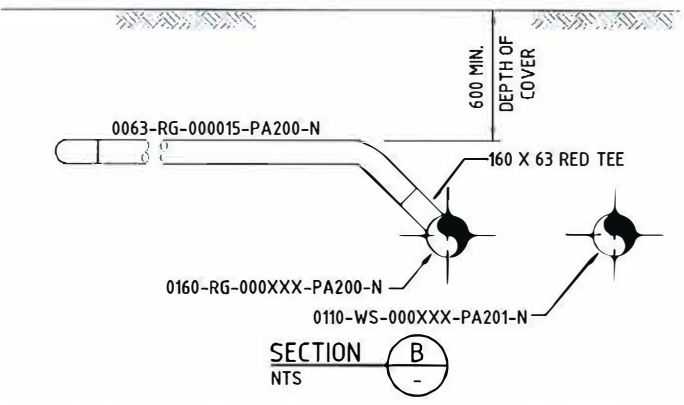
**PLANS AND DOCUMENTS referred to in the DEVELOPMENT APPROVAL**

SARA ref: RP118-011

Date: 22 October 2018



- NOTES**
- FENCE TO BE LOCATED BEYOND THE EXTENTS OF THE WELLHEAD HAZARDOUS AREA.
  - STANDARD REMOVABLE FENCE PANELS, 4.0m LONG BY 1.3m HIGH. MANUFACTURED FROM GALVANISED STEEL WITH COLD-GALV FINISH, INSTALLED AS PER MANUFACTURERS RECOMMENDATIONS. REFER TO ORG-ARW-CIV-STD-00009 FOR FURTHER DETAILS. WHERE HIGHER SECURITY FENCING IS SPECIFIED FOR A WELLPAD, USE PANELS AS PER DRAWING ORG-ARW-CIV-STD-00001.
  - CABLE LADDER TO INCLUDE LID AND SEPARATION BARRIER FOR LV/ELV CABLES AND TO BE SUPPORTED ON SLEEPERS AT GROUND LEVEL. SEE DRAWING ORG-ARW-CIV-DET-00003 FOR TYPICAL SLEEPER DETAILS.
  - EMERGENCY STOP CABLE TO BE RUN IN CONDUIT BURIED 150mm BELOW FINISHED SURFACE LEVEL.
  - SITE RUN DIRECTLY @ 750mm(MIN) DOC TO GATHERING LINE TIE-IN.
  - REFER ARROW UPSTREAM PROJECT EQUIPMENT NUMBERING STANDARD FLU-ARW-DMT-STA-00001 FOR SITE SPECIFIC TAG PREFIXES REQUIRED.
  - SEE DRAWING ORG-ARW-CIV-DET-00003 FOR GEOFABRIC AND GRAVEL DETAILS.
  - DIMENSIONS BASED ON ELIM GEN 3-9" 2K UNIHEAD (TKQ14/80N-00).
  - FOR ESD POST DETAILS REFER DWG. ORG-ARW-STR-DET-00003.



**WELLHEAD PLAN**  
SCALE: 1:30



This document is restricted. Neither the whole nor any part of this document may be used, reproduced, copied, stored in any retrieval system or transmitted in any form or by any means electronic, mechanical, reprographic, recording or otherwise or disclosed to any third party without the prior written consent of Arrow Energy Pty Ltd. All rights reserved.

REF DOC No.	REFERENCE DRAWING TITLE	REV	DATE	REVISION DESCRIPTION	ORIG	CHK'D	QA	APP'D
ORG-ARW-PRS-PID-00001	WELLHEAD WITH GENSET AND FLEXIBLE HOSES P&ID							
ORG-ARW-CIV-STD-00009	WELLPAD FENCING DETAILS - DETAIL DRAWING							
ORG-ARW-CIV-DET-00003	MISCELLANEOUS FOUNDATIONS - DETAIL DRAWING	2	16.12.16	ISSUED FOR CONSTRUCTION	LCa	MDw	GA	SRo
ORG-ARW-ELE-LAY-00001	WELLHEAD SKID - ELE & CONT CABINET LAYOUT	1	30.11.16	ISSUED FOR CONSTRUCTION	CJo	GLe	GA	SRo
FLU-CAJV-PIP-GAT-00001	CAJV TYPICAL PIPING GA WELLHEAD - SKID PLAN	0	14.10.16	ISSUED FOR CONSTRUCTION	CJo	NB	GA	SRo

**RPEQ CERTIFICATION**

Signature: *Mike Stanger*

Name: MIKE STANGER

RPEQ No. 6996

Date: 16.12.2016



SITE: --

PLANT: --

SECURITY CLASSIFICATION: RESTRICTED

DRAWING No. ORG-ARW-PIP-GAT-00001

**ARROW ENERGY**  
STANDARD WELLPAD DESIGN  
WELLHEAD WITH GENSET AND FLEXIBLE HOSES  
GENERAL ARRANGEMENT

STATUS: CONSTRUCTION

CONTRACTOR DWG No. 08553-DWG-36-L-0032

SCALE: 1:30

REV: 2

A1