

M.F.4225

This plan MUST NOT BE FOLDED but may be rolled.

111930

111930

Iron Pins etc.

Stn	Brg	Dist	Other
1	90°02'	200	O.Ptr Peg
2	359°59'	5.0	
2a	179°59'	"	
3	359°59'	"	
"	90°	"	
4	270°	"	
"	0°3'30"	"	
4a	180°3'30"	"	
5	270°1'30"	"	
"	180°0'30"	"	
6	90°1'30"	"	
7	"	100	

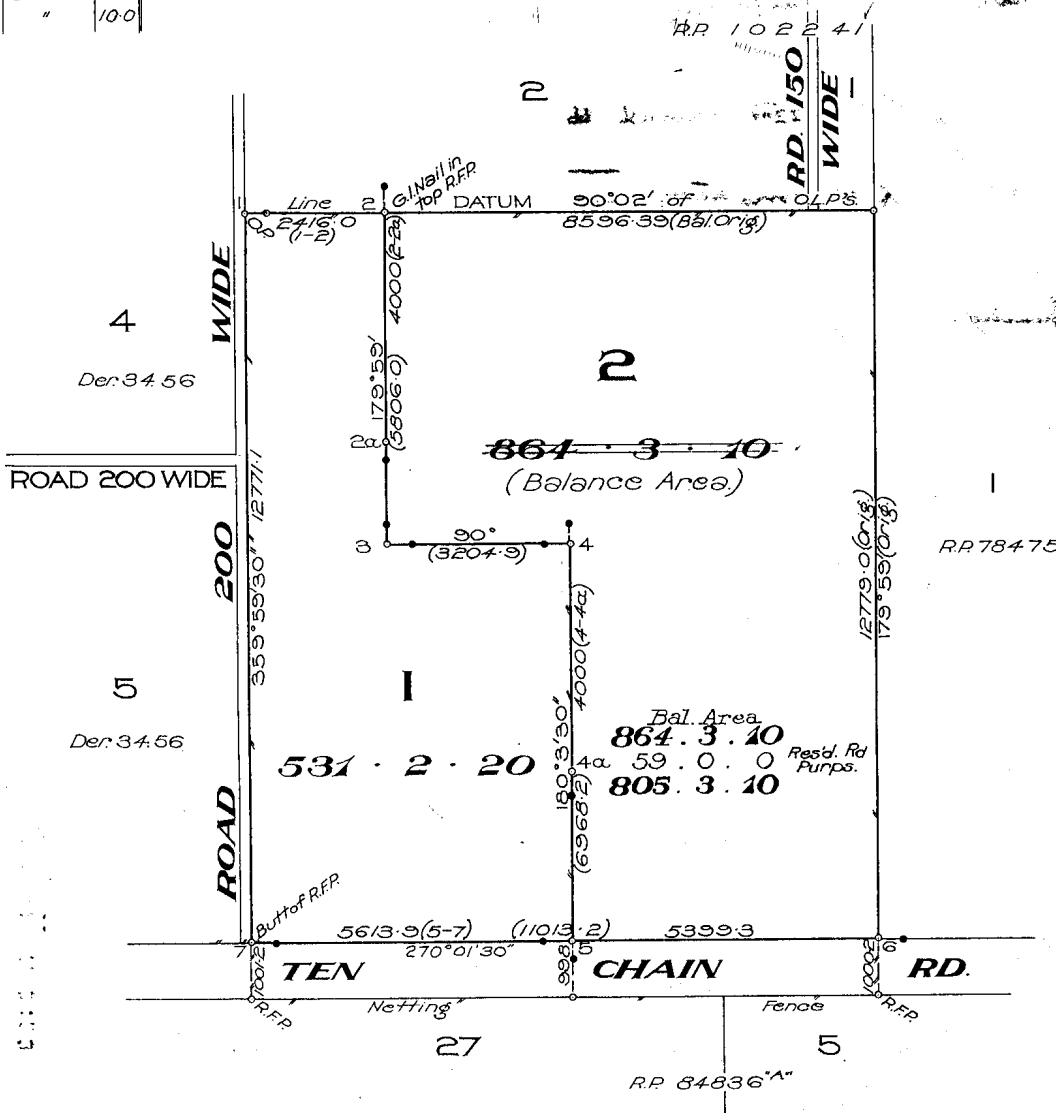
Branded Peg Plcd at Stn.
Nos. 2a, 3, 4, 4a, 5, 6.

Reference to Corners

Cor	Brg	From	Dist	Mks
6	154°40'	Stn 4	41.0	"

Drawing of Plan must be restricted to the space inside the blue lines

Drawing of Plan must be restricted to the space inside the blue lines



The area 59 acres reserved for road purposes in Subdivision 3 of Portion 12, Parish of Weale, may be allocated to Lot 2 as shown hereon.

A. N. Toms
Acting Surveyor General
19th December, 1966

Information shown (Orig.) hereon
Compiled from R.P. 102241 in The
Titles Office Brisbane

A. N. Toms
Auth. Surveyor

111930

111930

Lots 1 & 2 Orig. Portion 12
 Cancelling LOT 3 on R.P. 102241 Orig. Grant 25679
 Surveyed by K.N. Toms 28/7/1966 Town of WEALE SCALE 20 chains to an inch
 Parish of WEALE REGISTERED PLAN 111930

