

APA Group
Phone: +61 7 3323 6100
Web: www.apa.com.au
Email: Warren.Twist@apa.com.au

PROJECT: REEDY CREEK WALLUMBILLA PIPELINE

TITLE: Pipeline Route Map Series

SUBTITLE: Map 1 of 9

DATE: 7/06/2017

DATA SOURCE:
ESRI, APA Group, State of Queensland 2016/2017 (DNRM; Department of Science, Information Technology and Innovation)

Service Layer Credits: Source: Esri, DigitalGlobe, GeoEye, Earthstar Geographics, CNES/Airbus DS, USDA, USGS, AEX, Getmapping, Aerogrid, IGN, IGP, swisstopo, and the GIS User Community

SCALE: 1:20,000 @ A3 GDA 1994 MGA Zone 55

00.4750.95

Kilometres

LEGEND:

○ RWP Rev 0.2 - KP

— Existing Pipeline

— Watercourse

— RWP Rev 0.4 - Site Area

— RWP Rev 0.4 - Easement Buffer - 1 km

— Strategic Cropping Land

□ DCDB

Ground Truthed RE Biodiversity Status

— No Concern

— Endangered

— Endangered Regrowth

Mapped Regional Ecosystems - v10 Biodiversity Status


— No Concern

— Of Concern

DOCUMENT NUMBER: Q-03-101-MAP-L-0041

0.9	ISSUED FOR INFORMATION	JRB	KD	SA	WT	07/06/17
0.8	ISSUED FOR INFORMATION	JRB	KD	SA	WT	17/02/17
0.7	ISSUED FOR INFORMATION	JRB	KD	SA	WT	13/02/17
0.6	ISSUED FOR INFORMATION	JRB	KD	SA	WT	10/02/17
0.5	ISSUED FOR INFORMATION	JRB	KD	SA	WT	09/02/17
Revision	Description	Drawn	Checked	QC	Approved	Date

AREA OF DETAIL:



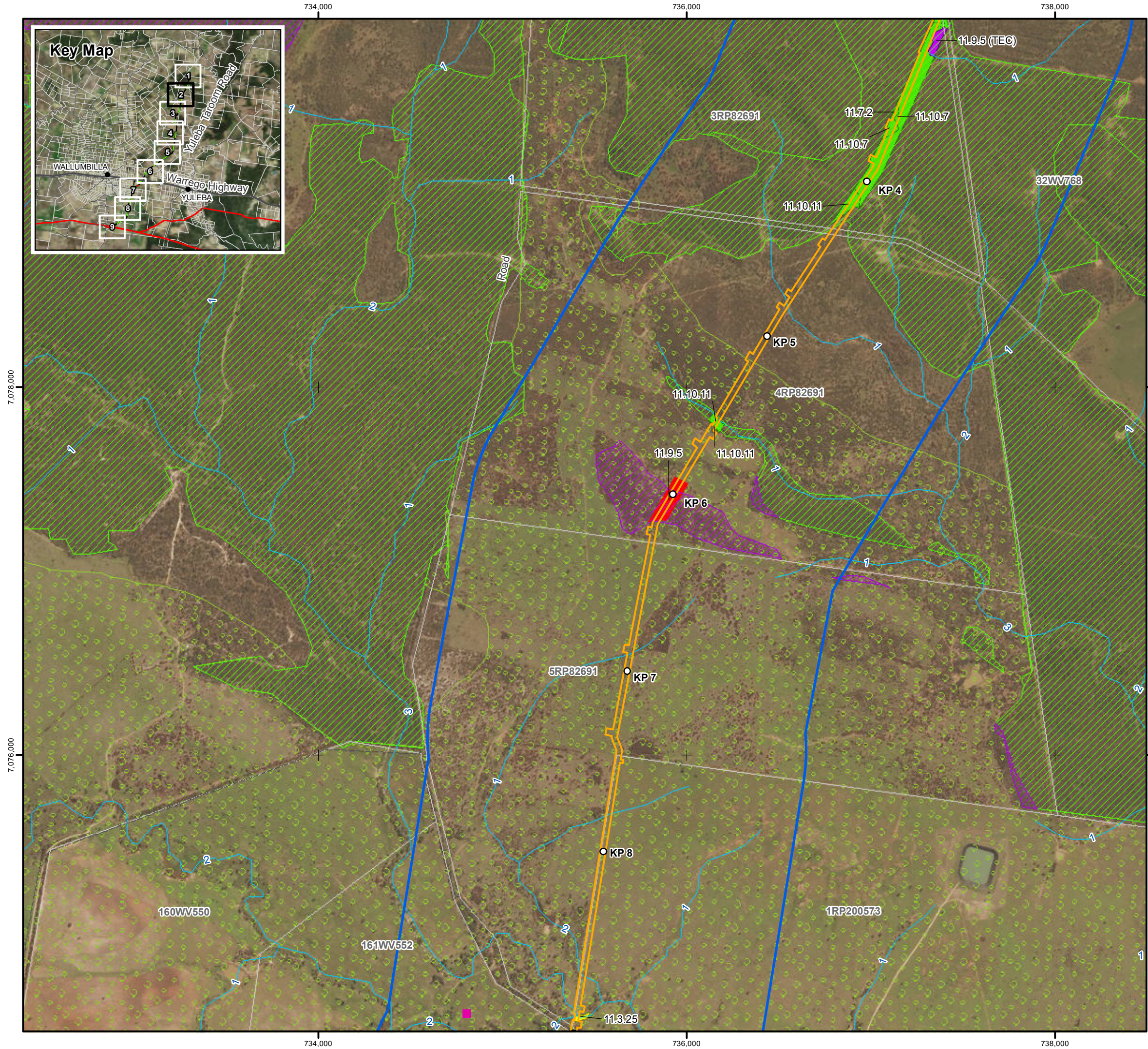
NT QLD SA NSW

MORANBAH GLADSTONE ROMA BRISBANE

APA Group does not guarantee the accuracy or completeness of the map and does not make any warranty about the data. APA is not under any liability to the user for any loss or damage (including consequential loss or damage) which the user may suffer resulting from the use of this map. This map is confidential and the information and details contained in it are and remain the property of APA Group. © APA Group 2017.

Template Version B

\\pipeline\trustapps\GIS\Projects\Wallumbilla_Reedy_Creek\Maps\Q-03-101-MAP-L-0041_RWP_Pipeline_Route_Maps_v0_9.mxd - 07 Jun 2017 - jastal



APA Group
Phone: +61 7 3323 6100
Web: www.apa.com.au
Email: Warren.Twist@apa.com.au

PROJECT: REEDY CREEK WALLUMBILLA PIPELINE

TITLE: Pipeline Route Map Series

SUBTITLE: Map 2 of 9

DATE: 7/06/2017

DATA SOURCE:
ESRI, APA Group, State of Queensland 2016/2017 (DNRM; Department of Science, Information Technology and Innovation)

Service Layer Credits: Source: Esri, DigitalGlobe, GeoEye, Earthstar Geographics, CNES/Airbus DS, USDA, USGS, AEX, Getmapping, Aerogrid, IGN, IGP, swisstopo, and the GIS User Community

SCALE: 1:20,000 @ A3 GDA 1994 MGA Zone 55

LEGEND:

○ RWP Rev 0.2 - KP

■ House

--- Minor Road

~ Watercourse

▭ RWP Rev 0.4 - Site Area

▭ RWP Rev 0.4 - Easement Buffer - 1 km

▨ Strategic Cropping Land

□ DCDB

Ground Truthed RE

Biodiversity Status

■ No Concern

■ Of Concern

■ Endangered

■ Endangered Regrowth

Mapped Regional Ecosystems - v10

Biodiversity Status

▨ No Concern

▨ Endangered

DOCUMENT NUMBER: Q-03-101-MAP-L-0041

0.9	ISSUED FOR INFORMATION	JRB	KD	SA	WT	07/06/17
0.8	ISSUED FOR INFORMATION	JRB	KD	SA	WT	17/02/17
0.7	ISSUED FOR INFORMATION	JRB	KD	SA	WT	13/02/17
0.6	ISSUED FOR INFORMATION	JRB	KD	SA	WT	10/02/17
0.5	ISSUED FOR INFORMATION	JRB	KD	SA	WT	09/02/17
Revision	Description	Drawn	Checked	QC	Approved	Date


AREA OF DETAIL:

APA Group does not guarantee the accuracy or completeness of the map and does not make any warranty about the data. APA is not under any liability to the user for any loss or damage (including consequential loss or damage) which the user may suffer resulting from the use of this map. This map is confidential and the information and details contained in it are and remain the property of APA Group. © APA Group 2017.

Template Version B

\\pelinetrustapps\GIS\Projects\Wallumbilla_Reedy_Creek\Maps\Q-03-101-MAP-L-0041_RWP_Pipeline_Route_Maps_v0_9.mxd - 07 Jun 2017 - jastal





APA Group
Phone: +61 7 3323 6100
Web: www.apa.com.au
Email: Warren.Twist@apa.com.au

PROJECT: REEDY CREEK WALLUMBILLA PIPELINE

TITLE: Pipeline Route Map Series

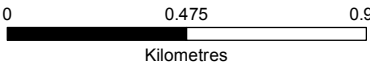
SUBTITLE: Map 3 of 9

DATE: 7/06/2017

DATA SOURCE:
ESRI, APA Group, State of Queensland 2016/2017 (DNRM; Department of Science, Information Technology and Innovation)

Service Layer Credits: Source: Esri, DigitalGlobe, GeoEye, Earthstar Geographics, CNES/Airbus DS, USDA, USGS, AEX, Getmapping, Aerogrid, IGN, IGP, swisstopo, and the GIS User Community

SCALE: 1:20,000 @ A3 GDA 1994 MGA Zone 55



LEGEND:

○ RWP Rev 0.2 - KP

■ House

--- Minor Road

~ Watercourse

▬ RWP Rev 0.4 - Site Area

▬ RWP Rev 0.4 - Easement Buffer - 1 km

▨ Strategic Cropping Land

□ DCDB

Ground Truthed RE

Biodiversity Status

■ No Concern

■ Of Concern

■ Endangered

Mapped Regional Ecosystems - v10

Biodiversity Status

▨ No Concern


▨ Of Concern

▨ Endangered

DOCUMENT NUMBER: Q-03-101-MAP-L-0041

Revision	Description	Drawn	Checked	QC	Approved	Date
0.9	ISSUED FOR INFORMATION	JRB	KD	SA	WT	07/06/17
0.8	ISSUED FOR INFORMATION	JRB	KD	SA	WT	17/02/17
0.7	ISSUED FOR INFORMATION	JRB	KD	SA	WT	13/02/17
0.6	ISSUED FOR INFORMATION	JRB	KD	SA	WT	10/02/17
0.5	ISSUED FOR INFORMATION	JRB	KD	SA	WT	09/02/17

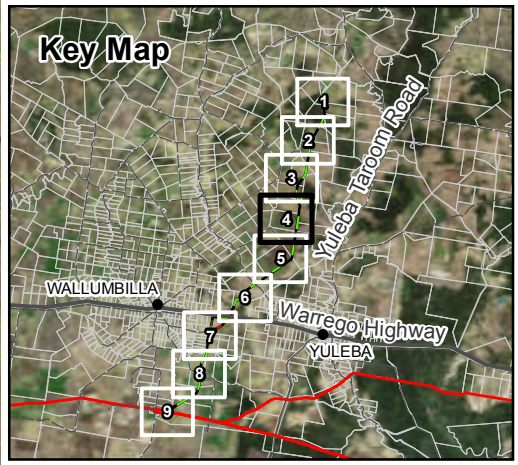
AREA OF DETAIL:



APA Group does not guarantee the accuracy or completeness of the map and does not make any warranty about the data. APA is not under any liability to the user for any loss or damage (including consequential loss or damage) which the user may suffer resulting from the use of this map. This map is confidential and the information and details contained in it are and remain the property of APA Group. © APA Group 2017.

Template Version B

\\pelinetrustapps\GIS\Projects\Wallumbilla_Reedy_Creek\Maps\Q-03-101-MAP-L-0041_RWP_Pipeline_Route_Maps_v0_9.mxd - 07 Jun 2017 - jastal



APA Group
Phone: +61 7 3323 6100
Web: www.apa.com.au
Email: Warren.Twist@apa.com.au

PROJECT: REEDY CREEK WALLUMBILLA PIPELINE

TITLE: Pipeline Route Map Series

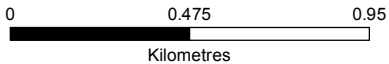
SUBTITLE: Map 4 of 9

DATE: 7/06/2017

DATA SOURCE:
ESRI, APA Group, State of Queensland 2016/2017 (DNRM; Department of Science, Information Technology and Innovation)

Service Layer Credits: Source: Esri, DigitalGlobe, GeoEye, Earthstar Geographics, CNES/Airbus DS, USDA, USGS, AEX, Getmapping, Aerogrid, IGN, IGP, swisstopo, and the GIS User Community

SCALE: 1:20,000 @ A3 GDA 1994 MGA Zone 55



LEGEND:

- RWP Rev 0.2 - KP
- House
- Minor Road
- Watercourse
- RWP Rev 0.4 - Site Area
- RWP Rev 0.4 - Easement Buffer - 1 km
- Strategic Cropping Land
- DCDB
- Ground Truthed RE**
- Biodiversity Status**
- No Concern
- Of Concern
- Endangered
- Endangered Regrowth
- Mapped Regional Ecosystems - v10**
- Biodiversity Status**
- No Concern
- Of Concern
- Endangered

DOCUMENT NUMBER: Q-03-101-MAP-L-0041


0.9	ISSUED FOR INFORMATION	JRB	KD	SA	WT	07/06/17
0.8	ISSUED FOR INFORMATION	JRB	KD	SA	WT	17/02/17
0.7	ISSUED FOR INFORMATION	JRB	KD	SA	WT	13/02/17
0.6	ISSUED FOR INFORMATION	JRB	KD	SA	WT	10/02/17
0.5	ISSUED FOR INFORMATION	JRB	KD	SA	WT	09/02/17
Revision	Description	Drawn	Checked	QC	Approved	Date

AREA OF DETAIL:



APA Group does not guarantee the accuracy or completeness of the map and does not make any warranty about the data. APA is not under any liability to the user for any loss or damage (including consequential loss or damage) which the user may suffer resulting from the use of this map. This map is confidential and the information and details contained in it are and remain the property of APA Group. © APA Group 2017.





APA Group
Phone: +61 7 3323 6100
Web: www.apa.com.au
Email: Warren.Twist@apa.com.au

PROJECT: REEDY CREEK WALLUMBILLA PIPELINE

TITLE: Pipeline Route Map Series

SUBTITLE: Map 5 of 9

DATE: 7/06/2017

DATA SOURCE:
ESRI, APA Group, State of Queensland 2016/2017 (DNRM; Department of Science, Information Technology and Innovation)

Service Layer Credits: Source: Esri, DigitalGlobe, GeoEye, Earthstar Geographics, CNES/Airbus DS, USDA, USGS, AEX, Getmapping, Aerogrid, IGN, IGP, swisstopo, and the GIS User Community

SCALE: 1:20,000 @ A3 GDA 1994 MGA Zone 55

00.4750.95

Kilometres

LEGEND:

○ RWP Rev 0.2 - KP

■ House

--- Minor Road

~ Watercourse

▭ RWP Rev 0.4 - Site Area

▭ RWP Rev 0.4 - Easement Buffer - 1 km

▨ Strategic Cropping Land

□ DCDB

Ground Truthed RE Biodiversity Status

■ Of Concern

■ Endangered

Mapped Regional Ecosystems - v10 Biodiversity Status


▨ No Concern

▨ Endangered

DOCUMENT NUMBER: Q-03-101-MAP-L-0041

0.9	ISSUED FOR INFORMATION	JRB	KD	SA	WT	07/06/17
0.8	ISSUED FOR INFORMATION	JRB	KD	SA	WT	17/02/17
0.7	ISSUED FOR INFORMATION	JRB	KD	SA	WT	13/02/17
0.6	ISSUED FOR INFORMATION	JRB	KD	SA	WT	10/02/17
0.5	ISSUED FOR INFORMATION	JRB	KD	SA	WT	09/02/17
Revision	Description	Drawn	Checked	QC	Approved	Date

AREA OF DETAIL:



NT

QLD

SA

NSW

MORANBAH

GLADSTONE

ROMA

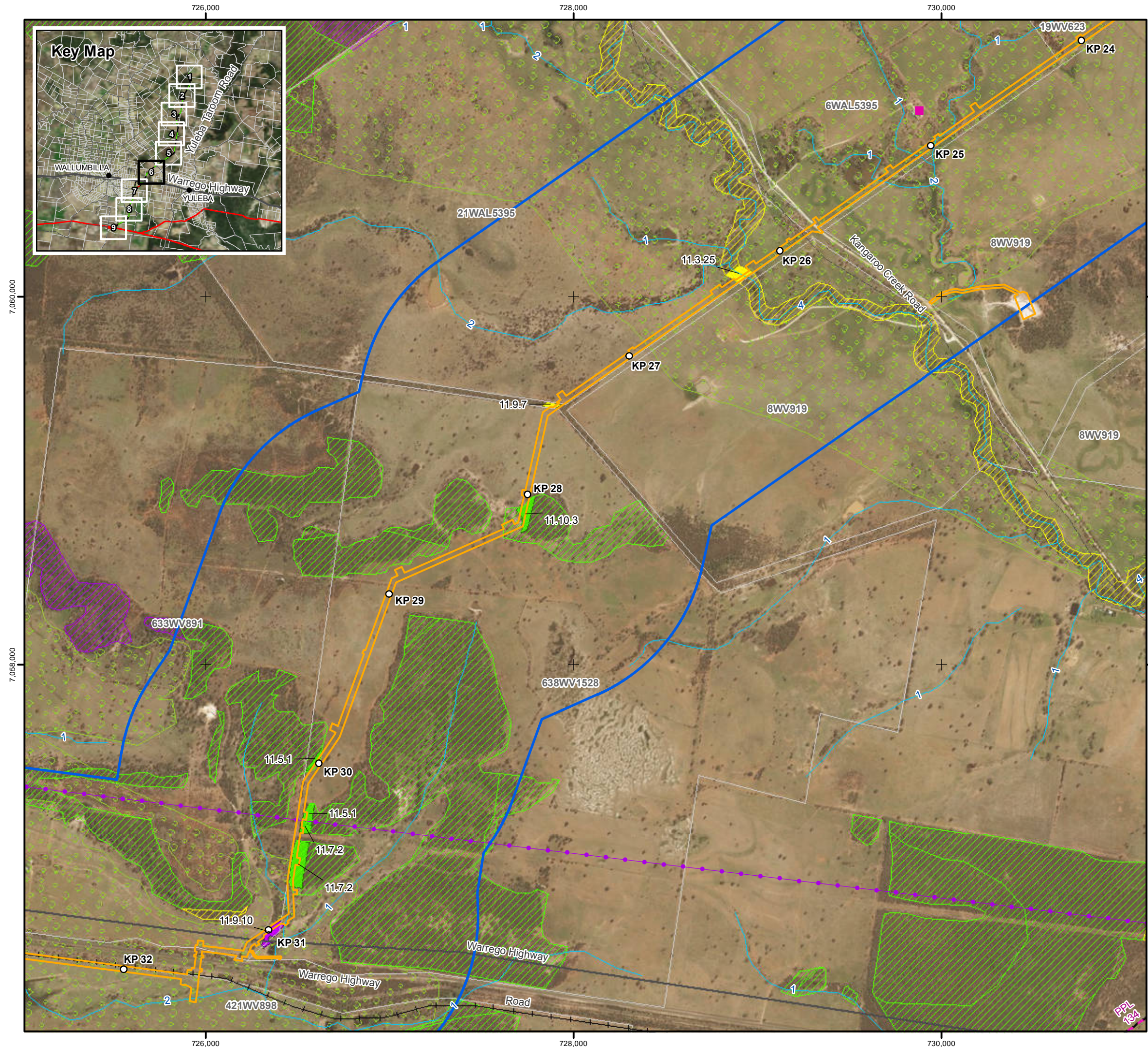
BRISBANE


N

APA Group does not guarantee the accuracy or completeness of the map and does not make any warranty about the data. APA is not under any liability to the user for any loss or damage (including consequential loss or damage) which the user may suffer resulting from the use of this map. This map is confidential and the information and details contained in it are and remain the property of APA Group. © APA Group 2017.

Template Version B

\\pelinetrust\apps\GIS\Projects\Wallumbilla_Reedy_Creek\Maps\Q-03-101-MAP-L-0041_RWP_Pipeline_Route_Maps_v0_9.mxd - 07 Jun 2017 - jastal





APA Group
Phone: +61 7 3323 6100
Web: www.apa.com.au
Email: Warren.Twist@apa.com.au

PROJECT: REEDY CREEK WALLUMBILLA PIPELINE

TITLE: Pipeline Route Map Series

SUBTITLE: Map 6 of 9

DATE: 7/06/2017

DATA SOURCE:
ESRI, APA Group, State of Queensland 2016/2017 (DNRM; Department of Science, Information Technology and Innovation)

Service Layer Credits: Source: Esri, DigitalGlobe, GeoEye, Earthstar Geographics, CNES/Airbus DS, USDA, USGS, AEX, Getmapping, Aerogrid, IGN, IGP, swisstopo, and the GIS User Community

SCALE: 1:20,000 @ A3 GDA 1994 MGA Zone 55

0 0.475 0.95
Kilometres

LEGEND:

○ RWP Rev 0.2 - KP

■ House

— Powerline (250K Data)

— Existing Pipeline

— Railway

— Principal Road

— Minor Road

— Watercourse

— RWP Rev 0.4 - Site Area

— RWP Rev 0.4 - Easement Buffer - 1 km

— Strategic Cropping Land

□ DCDB

Ground Truthed RE

Biodiversity Status

■ No Concern

■ Of Concern

■ Endangered

Mapped Regional Ecosystems - v10

Biodiversity Status

■ No Concern


■ Of Concern

■ Endangered

DOCUMENT NUMBER: Q-03-101-MAP-L-0041

Revision	Description	Drawn	Checked	QC	Approved	Date
0.9	ISSUED FOR INFORMATION	JRB	KD	SA	WT	07/06/17
0.8	ISSUED FOR INFORMATION	JRB	KD	SA	WT	17/02/17
0.7	ISSUED FOR INFORMATION	JRB	KD	SA	WT	13/02/17
0.6	ISSUED FOR INFORMATION	JRB	KD	SA	WT	10/02/17
0.5	ISSUED FOR INFORMATION	JRB	KD	SA	WT	09/02/17

AREA OF DETAIL:



NT QLD SA NSW

MORANBAH GLADSTONE ROMA BRISBANE

NT QLD SA NSW

MORANBAH GLADSTONE ROMA BRISBANE

APA Group does not guarantee the accuracy or completeness of the map and does not make any warranty about the data. APA is not under any liability to the user for any loss or damage (including consequential loss or damage) which the user may suffer resulting from the use of this map. This map is confidential and the information and details contained in it are and remain the property of APA Group. © APA Group 2017.

Template Version B



APA Group
Phone: +61 7 3323 6100
Web: www.apa.com.au
Email: Warren.Twist@apa.com.au

PROJECT: REEDY CREEK WALLUMBILLA PIPELINE

TITLE: Pipeline Route Map Series

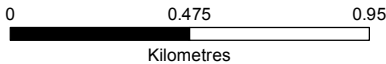
SUBTITLE: Map 7 of 9

DATE: 7/06/2017

DATA SOURCE:
ESRI, APA Group, State of Queensland 2016/2017 (DNRM; Department of Science, Information Technology and Innovation)

Service Layer Credits: Source: Esri, DigitalGlobe, GeoEye, Earthstar Geographics, CNES/Airbus DS, USDA, USGS, AEX, Getmapping, Aerogrid, IGN, IGP, swisstopo, and the GIS User Community

SCALE: 1:20,000 @ A3 GDA 1994 MGA Zone 55



LEGEND:

- RWP Rev 0.2 - KP
- House
- Existing Pipeline
- Railway
- Principal Road
- Minor Road
- Watercourse
- RWP Rev 0.4 - Site Area
- RWP Rev 0.4 - Easement Buffer - 1 km
- Strategic Cropping Land
- DCDB
- Ground Truthed RE**
- Biodiversity Status**
- No Concern
- Endangered
- Mapped Regional Ecosystems - v10**
- Biodiversity Status**
- No Concern
- Of Concern

DOCUMENT NUMBER: Q-03-101-MAP-L-0041


0.9	ISSUED FOR INFORMATION	JRB	KD	SA	WT	07/06/17
0.8	ISSUED FOR INFORMATION	JRB	KD	SA	WT	17/02/17
0.7	ISSUED FOR INFORMATION	JRB	KD	SA	WT	13/02/17
0.6	ISSUED FOR INFORMATION	JRB	KD	SA	WT	10/02/17
0.5	ISSUED FOR INFORMATION	JRB	KD	SA	WT	09/02/17
Revision	Description	Drawn	Checked	QC	Approved	Date

AREA OF DETAIL:



APA Group does not guarantee the accuracy or completeness of the map and does not make any warranty about the data. APA is not under any liability to the user for any loss or damage (including consequential loss or damage) which the user may suffer resulting from the use of this map. This map is confidential and the information and details contained in it are and remain the property of APA Group. © APA Group 2017.





APA Group
Phone: +61 7 3323 6100
Web: www.apa.com.au
Email: Warren.Twist@apa.com.au

PROJECT: REEDY CREEK WALLUMBILLA PIPELINE

TITLE: Pipeline Route Map Series

SUBTITLE: Map 8 of 9

DATE: 7/06/2017

DATA SOURCE:
ESRI, APA Group, State of Queensland 2016/2017 (DNRM; Department of Science, Information Technology and Innovation)

Service Layer Credits: Source: Esri, DigitalGlobe, GeoEye, Earthstar Geographics, CNES/Airbus DS, USDA, USGS, AEX, Getmapping, Aerogrid, IGN, IGP, swisstopo, and the GIS User Community

SCALE: 1:20,000 @ A3 GDA 1994 MGA Zone 55

0 0.475 0.95
Kilometres


LEGEND:

RWP Rev 0.2 - KP	Ground Truthed RE
House	Biodiversity Status
Existing Pipeline	Of Concern
Minor Road	Endangered
Watercourse	Mapped Regional Ecosystems - v10
RWP Rev 0.4 - Site Area	Biodiversity Status
RWP Rev 0.4 - Easement Buffer - 1 km	No Concern
Strategic Cropping Land	Of Concern
DCDB	Endangered

DOCUMENT NUMBER: Q-03-101-MAP-L-0041

0.9	ISSUED FOR INFORMATION	JRB	KD	SA	WT	07/06/17
0.8	ISSUED FOR INFORMATION	JRB	KD	SA	WT	17/02/17
0.7	ISSUED FOR INFORMATION	JRB	KD	SA	WT	13/02/17
0.6	ISSUED FOR INFORMATION	JRB	KD	SA	WT	10/02/17
0.5	ISSUED FOR INFORMATION	JRB	KD	SA	WT	09/02/17
Revision	Description	Drawn	Checked	QC	Approved	Date

AREA OF DETAIL:




NT QLD SA NSW MORANBAH GLADSTONE ROMA BRISBANE

APA Group does not guarantee the accuracy or completeness of the map and does not make any warranty about the data. APA is not under any liability to the user for any loss or damage (including consequential loss or damage) which the user may suffer resulting from the use of this map. This map is confidential and the information and details contained in it are and remain the property of APA Group. © APA Group 2017.

Template Version B

\\pelinetrustapps\GIS\Projects\Wallumbilla_Reedy_Creek\Maps\Q-03-101-MAP-L-0041_RWP_Pipeline_Route_Maps_v0_9.mxd - 07 Jun 2017 - jastal





APA Group
Phone: +61 7 3323 6100
Web: www.apa.com.au
Email: Warren.Twist@apa.com.au

PROJECT: REEDY CREEK WALLUMBILLA PIPELINE

TITLE: Pipeline Route Map Series

SUBTITLE: Map 9 of 9

DATE: 7/06/2017

DATA SOURCE:
ESRI, APA Group, State of Queensland 2016/2017 (DNRM; Department of Science, Information Technology and Innovation)

Service Layer Credits: Source: Esri, DigitalGlobe, GeoEye, Earthstar Geographics, CNES/Airbus DS, USDA, USGS, AEX, Getmapping, Aerogrid, IGN, IGP, swisstopo, and the GIS User Community

SCALE: 1:20,000 @ A3 GDA 1994 MGA Zone 55

00.4750.95

Kilometres

LEGEND:

○ RWP Rev 0.2 - KP

— Existing Pipeline

--- Minor Road

~ Watercourse

▭ RWP Rev 0.4 - Site Area

▭ RWP Rev 0.4 - Easement Buffer - 1 km

▭ Strategic Cropping Land

▭ DCDB

Ground Truthed RE Biodiversity Status

▭ Of Concern


Mapped Regional Ecosystems - v10 Biodiversity Status

▭ Of Concern

DOCUMENT NUMBER: Q-03-101-MAP-L-0041

0.9	ISSUED FOR INFORMATION	JRB	KD	SA	WT	07/06/17
0.8	ISSUED FOR INFORMATION	JRB	KD	SA	WT	17/02/17
0.7	ISSUED FOR INFORMATION	JRB	KD	SA	WT	13/02/17
0.6	ISSUED FOR INFORMATION	JRB	KD	SA	WT	10/02/17
0.5	ISSUED FOR INFORMATION	JRB	KD	SA	WT	09/02/17
Revision	Description	Drawn	Checked	QC	Approved	Date

AREA OF DETAIL:



NT

QLD

SA

NSW

MORANBAH

GLADSTONE

ROMA

BRISBANE

N

↑

APA Group does not guarantee the accuracy or completeness of the map and does not make any warranty about the data. APA is not under any liability to the user for any loss or damage (including consequential loss or damage) which the user may suffer resulting from the use of this map. This map is confidential and the information and details contained in it are and remain the property of APA Group. © APA Group 2017.