

REGIONAL INTERESTS DEVELOPMENT APPROVAL (RIDA)

RPI17/005/ACN 132 668 314 Pty Ltd – Barr Creek Project

(Given under the *Regional Planning Interests Act 2014* section 53)

Description of the land

Real property description: Lot 4 on UN803944

Local Government Area: Mt Isa City Council

Approved activities

The approved activities are set out in Table 1 of **Attachment 1**.

Definitions of the resource activities are included in Table 2 of **Attachment 1**.

This development approval authorises impacts on the Gulf Rivers Strategic Environmental Area (Gulf Rivers SEA) by the approved activities.

General Advice

It is the applicants' responsibility prior to works commencing on site to ensure all relevant approvals and licenses are obtained from the applicable Local, State, and/or Federal Authorities. This includes but not limited to approvals required under *Nature Conservation Act, 1992*; *Aboriginal Cultural Heritage Act, 2003* and *Environmental Protection and Biodiversity Conservation Act, 1999*.

Regional interests conditions

A person who is the holder of, or is acting under, this RIDA must not contravene a condition of this approval.

Condition number	Condition	Timing for condition
1.	Carry out the approved activities and disturbance of land generally in accordance with: a) The activities identified in Table 1: Approved activities b) The activities defined in Table 2: Definitions of Activities (See Attachment 1) . c) The approved plans: <ul style="list-style-type: none">Figure 1: Disturbed Areas, Dwg No. 4463-40-DWG-EV-00001, Rev C, dated 11/07/17, as amended in red	At all times

	<p>by DILGP (See Attachment 2);</p> <ul style="list-style-type: none"> • Figure 2: Indicative layout of MIA Area, received 23 June 2017 (See Attachment 2). • Figure 3: Overall Layout, dated April 2017 (See Attachment 2). 	
2.	The resource activities must not occur during the regional wet season (November to April).	At all times
3.	Waste products are to be removed from site and all such areas are to be rehabilitated as soon as practical upon cessation of the use and prior to the onset of the wet season (November to April).	At all times
4.	<p>Develop and implement erosion and sediment controls in accordance with the Best Practice Erosion and Sediment (BPESC) guidelines for Australia (International Erosion Control Association) which:</p> <ol style="list-style-type: none"> allows stormwater to pass through or around the site in a controlled manner and at non-erosive flow velocities; minimises soil erosion resulting from wind, rain, and flowing water; minimises the duration that disturbed soils are exposed to the erosive forces of wind, rain, and flowing water; minimises work-related soil erosion and sediment runoff; and minimises negative impacts to land adjacent to the activities. 	At all times
5.	Any access tracks that are constructed or upgraded must allow for the natural passage of surface water.	At all times
6.	<p>Clearing of native vegetation and other activities within the Gulf Rivers SEA are not permitted within or adjoining watercourses, lakes, wetlands or springs pursuant to the following setbacks, as applicable:</p> <ul style="list-style-type: none"> • Wetlands - 100 m of the defining bank of any natural wetland • Lakes - 100 m of the defining bank of any lake • Springs - 100 m of the defining bank of any spring • Watercourse or drainage feature (distance from the defining bank of a watercourse or drainage feature) <ul style="list-style-type: none"> – Stream order 1 or 2 - 25m – Stream order 3 or 4 - 50m – Stream order 5 or greater – 100m 	At all times
7.	Clearing of native vegetation and other activities are not permitted within 300 metres of watercourses, lakes, wetlands or springs located in the Gulf Rivers SEA designated area, which adjoins the proposed activities to the west.	At all times
8.	Contaminants must not be directly or indirectly released to waters (including groundwater) in the Gulf Rivers Strategic	At all times

	Environmental Area.	
9.	Progressively reinstate disturbed areas (including access tracks) to a pre-activity condition as soon as practical.	Upon completion of approved activities
10.	<p>a) All complaints received, and resulting actions taken, about the impact of the approved activities on the environmental attributes in the SEA must be recorded. The record must include:</p> <ul style="list-style-type: none"> i) name, address and contact number of the complainant ii) time and date of complaint iii) reasons for the complaint iv) investigations undertaken v) conclusions formed vi) actions taken to resolve the complaint vii) any abatement measures implemented viii) person responsible for resolving the complaint. <p>b) The records of any complaints received and recorded in accordance with this condition must be provided to the chief executive within three business days of receipt of the complaint to RPIAct@dilgp.qld.gov.au</p>	At all times
11.	A full copy of the regional interests development approval must be kept on-site and available to any person(s) contracted to undertake the approved activity, throughout the construction, operation and restoration period.	At all times

Attachment 1

Table 1: Approved activities – all within the Gulf Rivers Strategic Environmental Area

Area of regional interest	Location	Resource activity	Area of disturbance (hectares)
Gulf Rivers Strategic Environmental Area	Lot 4 on Plan UN803944	Test Pit	2.15
		Haul Road	0.26
		Access Tracks	0.07
		Dirty Water Drain	0.56
		Dirty water dam	0.24
		Dirty water overland Flow	0.11
		Dump	5.20
		Topsoil Dump	0.41
		Mine Infrastructure Area Pad	0.32
		Fuel Farm pad	0.10
		Clean water diversion bund	0.13
		Total area of disturbance is 9.6 ha.	

Table 2: Definitions

Resource activity	Definition
Test Pit	The test pit will be excavated by qualified contractors who will remove approximately 440,000 tonnes of material of which approximately 70,000 tonnes will be phosphatic material. The pit has been designed with a floor of approximately 20m x 40m, overall pit slope of 30 degrees and a total surface footprint of 2.15ha.
Haul Road	The haul road will be used to move material from the test pit to the stockpiles located on the dump.
Access Tracks	Light vehicles including trucks and equipment will use the tracks (maximum width of seven metres) to access the test pit site from the landholder's existing access roads and the property boundary.
Dirty Water Drain	The dirty water drain will direct any water that runs off the stockpiles into the dirty water/sediment dam.
Dirty Water Dam	The dirty water dam will store any water that has run off the stockpiles to ensure that the water does not enter the Strategic Environmental Area (SEA).
Dirty Water Overflow Drain	The overflow drain will direct any water that overflows from the dirty water dam during large rain events into the test pit.
Dump	The dump will be used to initially store the overburden, which will be stockpiled and levelled. Once prepared, the overburden pile will be used as the base to store the four stockpiles containing the four layers of phosphatic material.
Topsoil dump	The topsoil dump will be used to store the top soil taken from the test pit site.
MIA Pad	The MIA (Mine Infrastructure Area) pad will house supporting infrastructure during the test pit excavation including the workshop, administration block, storage and turn around facility for large vehicles.
Fuel Farm Pad	The fuel farm pad will house the self-bunded fuel tank and includes an area for refuelling.
Clean water diversion bund	The clean water diversion bund will ensure that during rain events, all clean water is diverted around the site so it will not retain any material from site prior to entering the SEA.

Attachment 2

Figure 1: Disturbed Areas, Dwg No. 4463-40-DWG-EV-00001, Rev C, dated 11/07/17, as amended in red by DILGP.

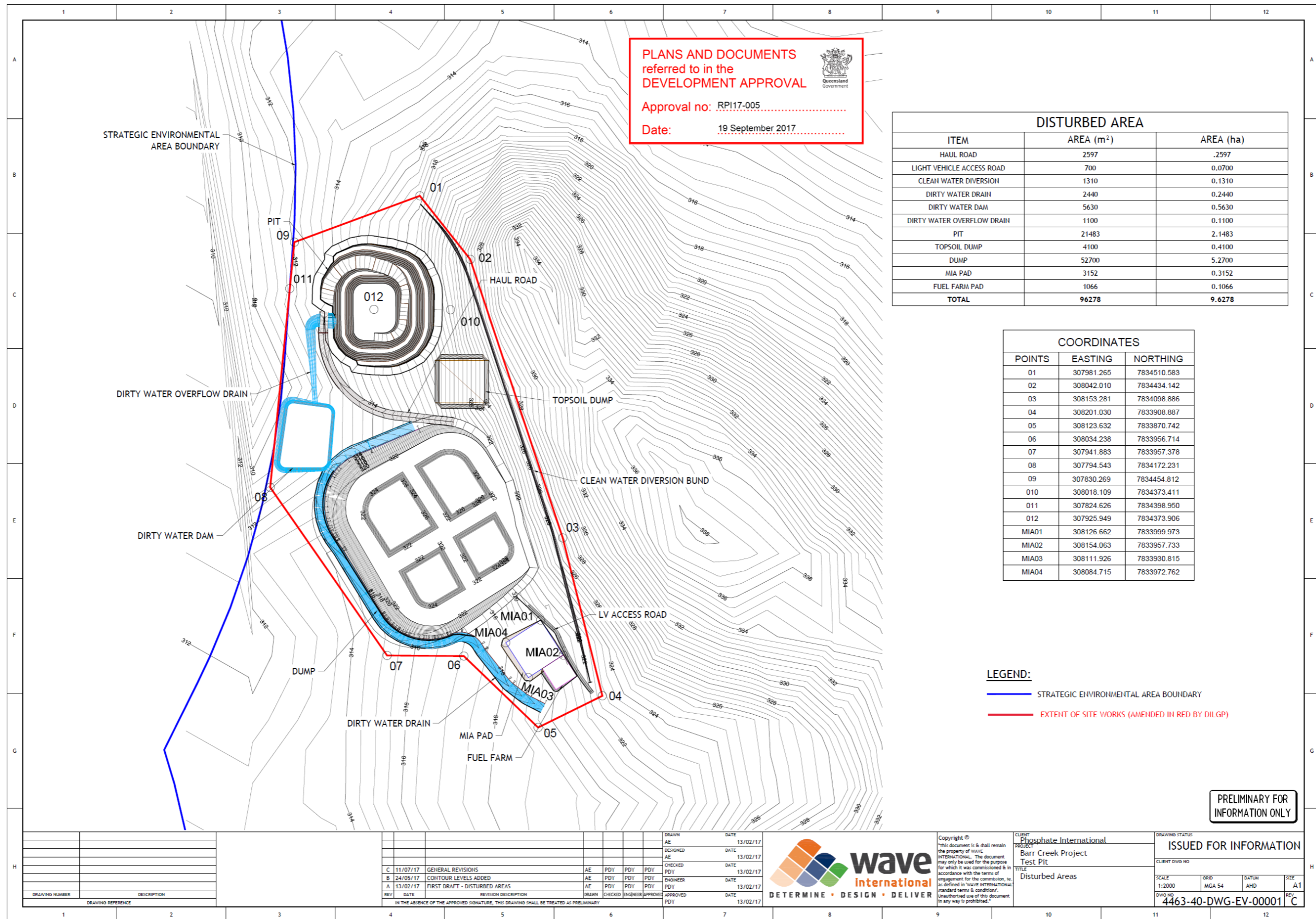
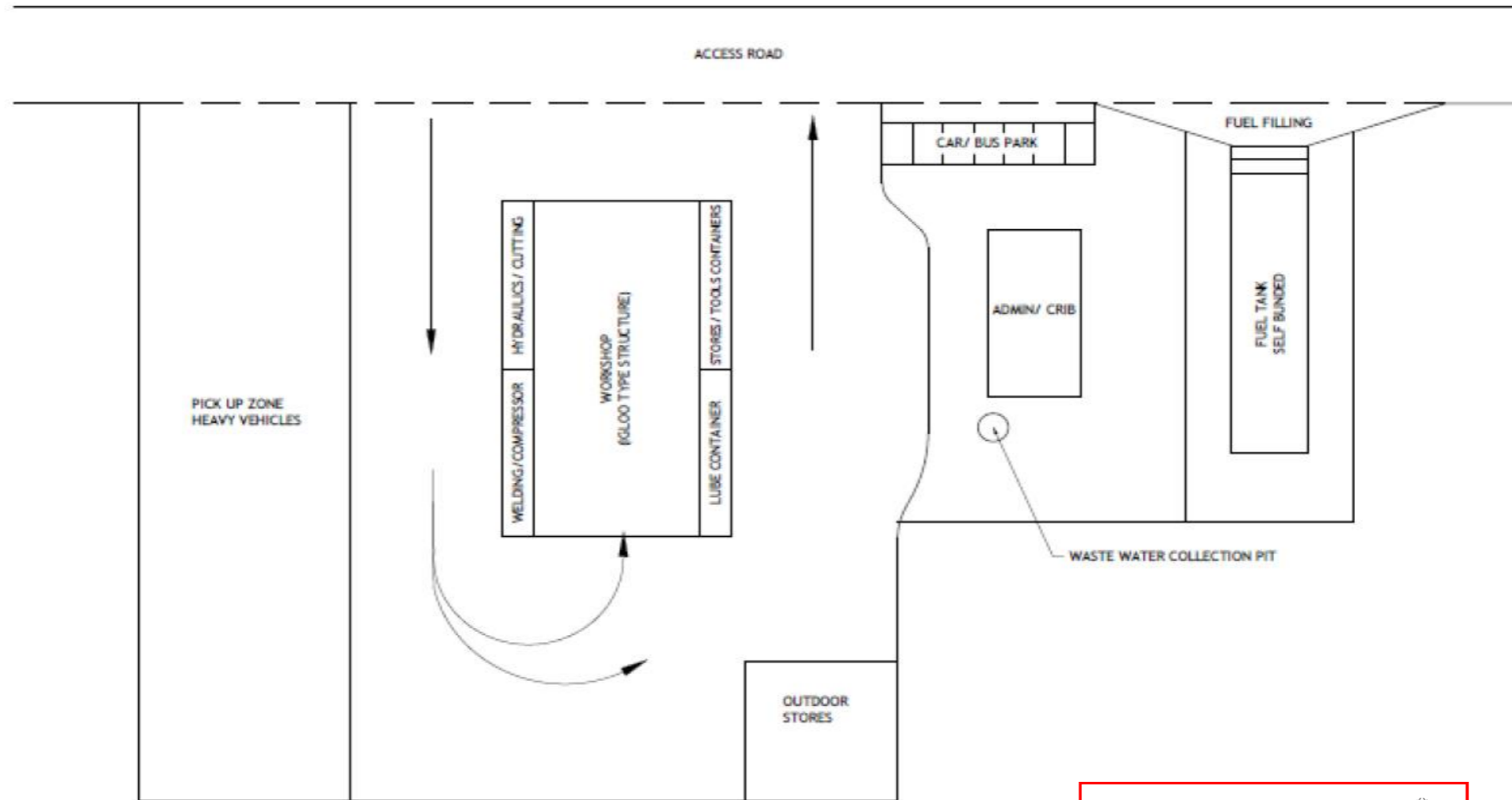


Figure 2: Indicative layout of MIA Area, received 23 June 2017



PLANS AND DOCUMENTS
referred to in the
DEVELOPMENT APPROVAL

Approval no: RPI17-005

Date: 19 September 2017



PLAN MIA AREA:
1:500

Figure 2: Indicative layout of MIA area

Figure 3: Overall Layout

