



Department of Infrastructure,
Local Government and Planning

Our ref: RPI17/005/PHOSPHATE INT-JULY
OUT17/4805

6 July 2017

Melissa Brown
Chief Executive Officer
Phosphate International
Level 1 GPO, 261 Queens Street
Brisbane QLD 4000
Via email: mbrown@phosphateinternational.com

Dear Ms Brown

RPI17-005-Phopshate International – Barr Creek Project

Requirement Notice (RPI Act, s44)

I refer to the assessment application, made on 26 June 2017 under section 29 of the *Regional Planning Interests Act 2014* (RPI Act), seeking a regional interests development approval (RIDA) for a phosphate exploration test pit and associated surface activities in the Gulf Rivers strategic environmental area (SEA).

Applicant	ACN 132 668 314 Pty Ltd
Project	Barr Creek Project

Site Details	
Street address	'Barr Creek Station' 129 Mount Oxide Road, Gunpowder

Real property description	Lot 4 on Plan UN803944
---------------------------	-------------------------------

Local government area	Mount Isa City Council
-----------------------	-------------------------------

Public notification requirement

You are advised that it has been determined that the above assessment application requires notification under the RPI Act, Part 3 and Division 4. The reason for the decision is that the site specific land uses have not previously been sufficiently publically notified.

Section 35 of the RPI Act requires the applicant to publish a notice about the assessment application in the way prescribed in section 13 of the *Regional Planning Interests Regulation 2014* (RPI Regulation) and give the owners¹ of the land notice about the application.

Notification must commence within 20 business days of the date of this letter. The notification period is 15 business days.

The approved form for notification is available on the department's website here:

<http://www.dilqp.qld.gov.au/planning/regional-planning/rpi-act-forms-guidelines-and-fact-sheets.html>

Refer to *RPI Act Guideline 06/14 notification requirements under the RPI Act* for further information.

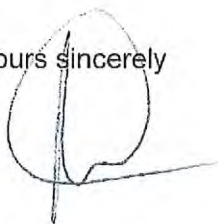
Information Requirement

You are advised that in accordance with Section 44 of the RPI Act, further information is required. Further information is required in order to assess the application against the assessment criteria contained in Schedule 2, Part 5 of the RPI Regulation. The requested further information is detailed within Attachment A.

The period in which you must provide the requested information is a maximum of 12 months from the day you receive this notice. You may request an extension to this period if necessary.

If you require any further information, please contact Darren Brewer, Development Assessment and Advisory Team on 3452 7472 who will be pleased to assist.

Yours sincerely



Patrick Atkinson

Director – Development Assessment

Enc – Attachment A – Information required for assessment against SEA criteria

¹ Owner of land is defined in the RPI Act and means the person who is entitled to receive rent for the land, or a the lessee of a lease issued under the *Land Act 1994* for agricultural, grazing or pastoral purposes.

ATTACHMENT A

Information required for assessment against the SEA Criteria

In relation to the RPI Regulation, Schedule 2, Part 5 Required Outcomes

1.

To enable the issuing of a decision notice that succinctly identifies the resource activities, their location and the area of disturbance:

- Provide definitions in Table 1 that are an accurate description of the resource activities proposed in the application.
- Complete Table 2, column 4 detailing the total area of disturbance for each of the resource activities.

Table 1: Definitions

Activity	Definition
Eg. Test Pit	<INSERT DESCRIPTION OF ACTIVITIES THAT TAKE PLACE WITHIN ITS FOOTPRINT>
Eg. Access Tracks	<INSERT DESCRIPTION OF ACTIVITIES THAT TAKE PLACE WITHIN ITS FOOTPRINT>
Eg. Dirty Water Dam	<INSERT DESCRIPTION OF ACTIVITIES THAT TAKE PLACE WITHIN ITS FOOTPRINT>

Table 2: Proposed activities, location and area of disturbance

Area of regional interest	Location	Resource activity	Area of disturbance
Strategic environmental area	Lot 4 on Plan UN803944	Eg. Test Pit	TBA
		Eg. Access Tracks	TBA
		Eg. Dirty Water Dam	TBA
Total area of disturbance			TBA

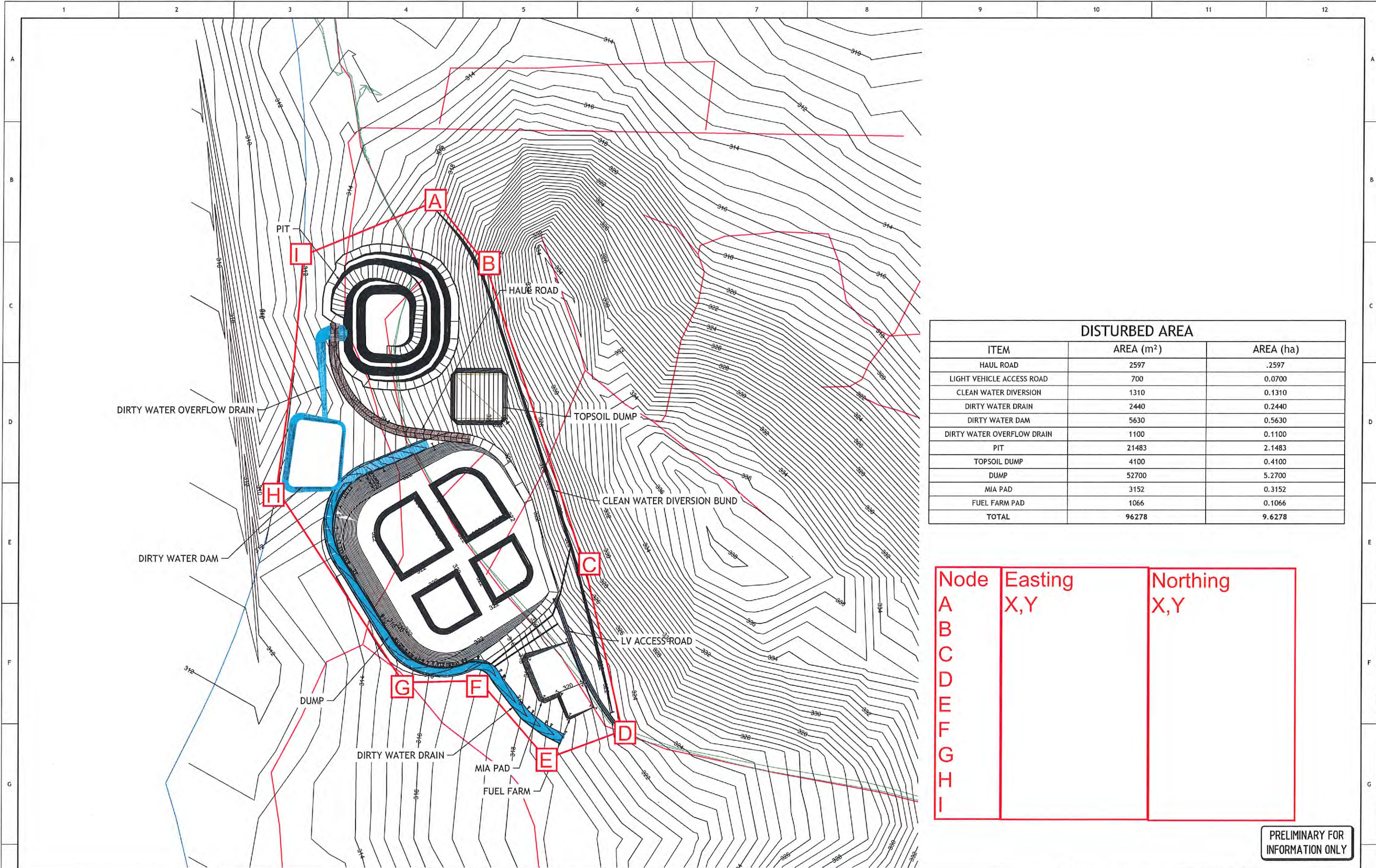
2.

The proposal plans containing with the supporting application material do not sufficiently identify the extent of the proposed activities.

- With regard to *Figure 2: Indicative layout of MIA area*, provide dimensions of the overall footprint of the MIA area (overall X and Y axis is sufficient);
- With regard to *Disturbed Areas, prepared by Wave International, Dwg No. 4463-40-DWG-EV-00001, Rev B dated 25/05/2017*, provide a table of coordinates (Easting, Northing) on the above referenced plan for each of the nodes identified on Attachment B to this request;
- With regard to *Disturbed Areas, prepared by Wave International, Dwg No. 4463-40-DWG-EV-00001, Rev B dated 25/05/2017*, provide Easting and Northing coordinates to clearly establish the location of the SEA precinct line, currently delineated by a blue line to the west of the disturbance area. The blue line is to be referenced by means of a legend.
- With regard to *Disturbed Areas, prepared by Wave International, Dwg No. 4463-40-DWG-EV-00001, Rev B dated 25/05/2017*, it is further noted that there is an erroneous green line that traverses through the development area. There are also various red lines. Please confirm the nature of the

	lines. It is surmised that they may be remnant GIS lines and are redundant. If so, they should be deleted.
3.	<p>Electronic spatial data has not been provided in support of the application. This would assist in assessment of the application.</p> <ul style="list-style-type: none"> • Provide spatial data files in 'ESRI Shapefile' and/or 'Google Earth KMZ' format showing the locations of each activity footprint area.
4.	<p>Section 4.1 of the assessment application report notes that dirty water run-off will be collected and stored in a sediment dam. Based on the information provided, it is unclear what the volumes of the test pit and sediment dam will be and how the dirty water collected will be disposed of.</p> <ul style="list-style-type: none"> • Provide information regarding the volumes of both the test pit and the sediment dam; • Provide further information address the disposal of dirty water, ensuring that it does not cause an irreversible or widespread impact on the SEA values; and • Provide an explanation of the fate of the sludge in the sediment dam.
5.	<p>The application does not sufficiently address how the areas of impact will be restored upon completion of the activities to ensure no widespread or irreversible impact to the SEA.</p> <ul style="list-style-type: none"> • Provide further information on how the areas of impact will be restored upon completion of activities.
6.	<p>The assessment application report does not sufficiently address potential impacts to wildlife corridor function.</p> <ul style="list-style-type: none"> • Provide detailed site specific vegetation mapping at an appropriate scale to determine whether wildlife corridor function is likely to be compromised by the proposed activities; and • Provide detail which demonstrates consideration of rare and threatened or otherwise significant fauna which may be present having particular regard to riparian vegetation communities and their ecological function.
7.	<p>The application does not sufficiently address how sediment and sediment laden runoff will be contained and not adversely impact on water quality to receiving watercourses.</p> <ul style="list-style-type: none"> • Provide further information demonstrating that best practice will be incorporate through the design, installation and maintained of sediment and erosion control structures.

ATTACHMENT B



DISTURBED AREA		
ITEM	AREA (m²)	AREA (ha)
HAUL ROAD	2597	.2597
LIGHT VEHICLE ACCESS ROAD	700	0.0700
CLEAN WATER DIVERSION	1310	0.1310
DIRTY WATER DRAIN	2440	0.2440
DIRTY WATER DAM	5630	0.5630
DIRTY WATER OVERFLOW DRAIN	1100	0.1100
PIT	21483	2.1483
TOPSOIL DUMP	4100	0.4100
DUMP	52700	5.2700
MIA PAD	3152	0.3152
FUEL FARM PAD	1066	0.1066
TOTAL	96278	9.6278

Node	Easting X,Y	Northing X,Y
A		
B		
C		
D		
E		
F		
G		
H		
I		

PRELIMINARY FOR
INFORMATION ONLY

																																																																																																																																																																																																																																																																																																																																																																																																																																																																																																																																																																																																																																																																																																																																																																																																																																																																																																																																																																																																																																																																																																																																																																																																																		</	
--	--	--	--	--	--	--	--	--	--	--	--	--	--	--	--	--	--	--	--	--	--	--	--	--	--	--	--	--	--	--	--	--	--	--	--	--	--	--	--	--	--	--	--	--	--	--	--	--	--	--	--	--	--	--	--	--	--	--	--	--	--	--	--	--	--	--	--	--	--	--	--	--	--	--	--	--	--	--	--	--	--	--	--	--	--	--	--	--	--	--	--	--	--	--	--	--	--	--	--	--	--	--	--	--	--	--	--	--	--	--	--	--	--	--	--	--	--	--	--	--	--	--	--	--	--	--	--	--	--	--	--	--	--	--	--	--	--	--	--	--	--	--	--	--	--	--	--	--	--	--	--	--	--	--	--	--	--	--	--	--	--	--	--	--	--	--	--	--	--	--	--	--	--	--	--	--	--	--	--	--	--	--	--	--	--	--	--	--	--	--	--	--	--	--	--	--	--	--	--	--	--	--	--	--	--	--	--	--	--	--	--	--	--	--	--	--	--	--	--	--	--	--	--	--	--	--	--	--	--	--	--	--	--	--	--	--	--	--	--	--	--	--	--	--	--	--	--	--	--	--	--	--	--	--	--	--	--	--	--	--	--	--	--	--	--	--	--	--	--	--	--	--	--	--	--	--	--	--	--	--	--	--	--	--	--	--	--	--	--	--	--	--	--	--	--	--	--	--	--	--	--	--	--	--	--	--	--	--	--	--	--	--	--	--	--	--	--	--	--	--	--	--	--	--	--	--	--	--	--	--	--	--	--	--	--	--	--	--	--	--	--	--	--	--	--	--	--	--	--	--	--	--	--	--	--	--	--	--	--	--	--	--	--	--	--	--	--	--	--	--	--	--	--	--	--	--	--	--	--	--	--	--	--	--	--	--	--	--	--	--	--	--	--	--	--	--	--	--	--	--	--	--	--	--	--	--	--	--	--	--	--	--	--	--	--	--	--	--	--	--	--	--	--	--	--	--	--	--	--	--	--	--	--	--	--	--	--	--	--	--	--	--	--	--	--	--	--	--	--	--	--	--	--	--	--	--	--	--	--	--	--	--	--	--	--	--	--	--	--	--	--	--	--	--	--	--	--	--	--	--	--	--	--	--	--	--	--	--	--	--	--	--	--	--	--	--	--	--	--	--	--	--	--	--	--	--	--	--	--	--	--	--	--	--	--	--	--	--	--	--	--	--	--	--	--	--	--	--	--	--	--	--	--	--	--	--	--	--	--	--	--	--	--	--	--	--	--	--	--	--	--	--	--	--	--	--	--	--	--	--	--	--	--	--	--	--	--	--	--	--	--	--	--	--	--	--	--	--	--	--	--	--	--	--	--	--	--	--	--	--	--	--	--	--	--	--	--	--	--	--	--	--	--	--	--	--	--	--	--	--	--	--	--	--	--	--	--	--	--	--	--	--	--	--	--	--	--	--	--	--	--	--	--	--	--	--	--	--	--	--	--	--	--	--	--	--	--	--	--	--	--	--	--	--	--	--	--	--	--	--	--	--	--	--	--	--	--	--	--	--	--	--	--	--	--	--	--	--	--	--	--	--	--	--	--	--	--	--	--	--	--	--	--	--	--	--	--	--	--	--	--	--	--	--	--	--	--	--	--	--	--	--	--	--	--	--	--	--	--	--	--	--	--	--	--	--	--	--	--	--	--	--	--	--	--	--	--	--	--	--	--	--	--	--	--	--	--	--	--	--	--	--	--	--	--	--	--	--	--	--	--	--	--	--	--	--	--	--	--	--	--	--	--	--	--	--	--	--	--	--	--	--	--	--	--	--	--	--	--	--	--	--	--	--	--	--	--	--	--	--	--	--	--	--	--	--	--	--	--	--	--	--	--	--	--	--	--	--	--	--	--	--	--	--	--	--	--	--	--	--	--	--	--	--	--	--	--	--	--	--	--	--	--	--	--	--	--	--	--	--	--	--	--	--	--	--	--	--	--	--	--	--	--	--	--	--	--	--	--	--	--	--	--	--	--	--	--	--	--	--	--	--	--	--	--	--	--	--	--	--	--	--	--	--	--	--	--	--	--	--	--	--	--	--	--	--	--	--	--	--	--	--	--	--	--	--	--	--	--	--	--	--	--	--	--	--	--	--	--	--	--	--	--	--	--	--	--	--	--	--	--	--	--	--	--	--	--	--	--	--	--	--	--	--	--	--	--	--	--	--	--	--	--	--	--	--	--	--	--	--	--	--	--	--	--	--	--	--	--	--	--	--	--	--	--	--	--	--	--	--	--	--	--	--	--	--	--	--	--	--	--	--	--	--	--	--	--	--	--	--	--	--	--	--	--	--	--	--	--	--	--	--	--	--	--	--	--	--	--	--	--	--	--	--	--	--	--	--	--	--	--	--	--	--	--	--	--	--	--	--	--	--	--	--	--	--	--	--	--	--	--	--	--	--	--	--	--	--	--	--	--	--	--	--	--	--	--	--	--	--	--	--	--	--	--	--	--	--	--	--	--	--	--	--	--	--	--	--	--	--	--	--	--	--	--	--	--	--	--	--	--	--	--	--	--	--	--	--	--	--	--	--	--	--	--	--	--	--	--	--	--	--	--	--	--	--	--	--	--	--	--	--	--	--	--	--	--	--	--	--	--	--	--	--	--	--	--	--	--	--	--	--	--	--	--	--	--	--	--	----	--