

AMENDED REGIONAL INTERESTS DEVELOPMENT APPROVAL (RIDA)

RPI17/001 ~~Norton Gold Fields Limited~~ *Heritage Minerals – Mount Morgan Mine Project*

(Given under the *Regional Planning Interests Act 2014* section 53)

Description of the land

Real property description: Refer to **Attachment A**

Local Government Area: Rockhampton Regional Council

Approved activities

The approved activities are set out in Table 1 of **Attachment 1**.

Definitions of the resource activities are included in Table 2 of **Attachment 1**.

This development approval authorises impacts on a Priority Living Area (PLA) by the approved activities.

General Advice

It is the applicants' responsibility prior to works commencing on site to ensure all relevant approvals and licenses are obtained from the applicable Local, State, and/or Federal Authorities. This includes but not limited to approvals required under *Nature Conservation Act, 1992; Aboriginal Cultural Heritage Act, 2003 and Environmental Protection and Biodiversity Conservation Act, 1999*.

Regional interests conditions

A person who is the holder of, or is acting under, this RIDA must not contravene a condition of this approval.

Condition number	Condition	Timing for condition
1.	Carry out the approved activity generally in accordance with: a) The activities identified in Table 1: Approved activities (refer Attachment 1) b) The activities defined in Table 2: Definitions of Activities (refer Attachment 1) c) The locations as shown on approved plan:	At all times.

	<ul style="list-style-type: none"> Carbine Resource Activity Heritage Minerals by Lot and Plan (Amended), dated 17/03/2017 May 2021 (refer Attachment 2). 	
2.	<p>a) All complaints received, and resulting actions taken, about the impact of the approved activities on the attributes of the PLA must be recorded. The record must include:</p> <ol style="list-style-type: none"> name, address and contact number of the complainant time and date of complaint reasons for the complaint investigations undertaken conclusions formed actions taken to resolve the complaint any abatement measures implemented person responsible for resolving the complaint. <p>b) The records of any complaints received and recorded in accordance with this condition must be provided to the chief executive at RPIAct@dsgilqp.qld.gov.au and quoting RPI17-001.</p>	<p>(a) At all times.</p> <p>(b) Within three business days of receipt of a complaint.</p>
3.	A full copy of the regional interest development approval must be kept on-site and available to any person(s).	At all times.
4.	<p>Undertake road upgrade works for the local government road network at the locations set out in Table 1 of the Haul Route Road Impact Assessment, prepared by McMurtrie Consulting Engineers, dated 18 April 2017 and generally in accordance with the following plans for each respective location (refer Attachment 2):</p> <p>Gordon Lane and Proposed Internal Road Intersection – Swept Path and Roadworks Layout Plan – Sheet 2 of 2, prepared by McMurtrie Consulting Engineers, drawing number 1021617-6002, dated 13/04/2017, revision A;</p> <p>Creek Street Reverse Curves – Roadworks Layout Plan – Sheet 1 of 2, prepared by McMurtrie Consulting Engineers, drawing number 1021617-2001, dated 13/04/2017, revision A;</p> <p>Creek Street Reverse Curves – Roadworks Layout Plan – Sheet 2 of 2, prepared by McMurtrie Consulting Engineers, drawing number 1021617-2002, dated 13/04/2017, revision A;</p> <p>Razorback Road Jump Up – Roadworks Layout Plan – Sheet 1 of 2, prepared by McMurtrie Consulting Engineers, drawing number 1021617-1001, dated 13/04/2017, revision A;</p> <p>Razorback Road Jump Up – Roadworks Layout Plan – Sheet 2 of 2, prepared by McMurtrie Consulting</p>	<p>Prior to commencement of any haulage from the site.</p>

	<p>Engineers, drawing number 1021617-1002, dated 13/04/2017, revision A; Razorback Road Jump Up — Road Cross Sections— Sheet 1 of 10, prepared by McMurtrie Consulting Engineers, drawing number 1021617-1101, dated 13/04/2017, revision A; Razorback Road Jump Up — Road Cross Sections— Sheet 2 of 10, prepared by McMurtrie Consulting Engineers, drawing number 1021617-1102, dated 13/04/2017, revision A; Razorback Road Jump Up — Road Cross Sections— Sheet 3 of 10, prepared by McMurtrie Consulting Engineers, drawing number 1021617-1103, dated 13/04/2017, revision A; Razorback Road Jump Up — Road Cross Sections— Sheet 4 of 10, prepared by McMurtrie Consulting Engineers, drawing number 1021617-1104, dated 13/04/2017, revision A; Razorback Road Jump Up — Road Cross Sections— Sheet 5 of 10, prepared by McMurtrie Consulting Engineers, drawing number 1021617-1105, dated 13/04/2017, revision A; Razorback Road Jump Up — Road Cross Sections— Sheet 6 of 10, prepared by McMurtrie Consulting Engineers, drawing number 1021617-1106, dated 13/04/2017, revision A; Razorback Road Jump Up — Road Cross Sections— Sheet 7 of 10, prepared by McMurtrie Consulting Engineers, drawing number 1021617-1107, dated 13/04/2017, revision A; Razorback Road Jump Up — Road Cross Sections— Sheet 8 of 10, prepared by McMurtrie Consulting Engineers, drawing number 1021617-1108, dated 13/04/2017, revision A; Razorback Road Jump Up — Road Cross Sections— Sheet 9 of 10, prepared by McMurtrie Consulting Engineers, drawing number 1021617-1109, dated 13/04/2017, revision A; and Razorback Road Jump Up — Road Cross Sections— Sheet 10 of 10, prepared by McMurtrie Consulting Engineers, drawing number 1021617-1110, dated 13/04/2017, revision A.</p>	
<p>4.</p>	<p>Carry out the following works:</p> <ul style="list-style-type: none"> a) Sealing of the internal road from the property boundary access for a distance of 350m along the internal haul access road; b) Construction of mine access, signage, and widening works to a BAR/BAL standard on Gordon Lane, generally in accordance with McMurtrie Consulting Engineering Drawing 1021617-1009 Rev A dated 13/04/2017; 	<p>Prior to commencement of any haulage from the site.</p>

	<p>c) Alteration of line marking at the intersection of Gordon Lane / Burnett Highway generally in accordance with the McMurtrie Consulting Engineering Drawing Number 1021617-5002 Rev A dated 13/04/2017;</p> <p>d) Road widening and sealing at the north eastern corner of the intersection of Burnett Highway / Creek Street / Razorback Road to facilitate right turn movements out of Creek St / Razorback Road, generally in accordance with McMurtrie Consulting Engineers Drawing Number 1021617-7002 Rev A dated 13/04/2017.</p>	
5.	Provide written notification to Rockhampton Regional Council at enquiries@rrc.qld.gov.au (and quoting RPI17-001, application D8-2017) when the transportation of material extracted from the site is to commence.	Prior to commencement of any haulage from the site.
6.	Provide documentation to Rockhampton Regional Council (such as weigh bridge statements or similar) verifying the quantity of material that is extracted and transported from the site. The information is to be provided to Rockhampton Regional Council at enquiries@rrc.qld.gov.au and quoting RPI17-001, application D8-2017 .	First day of every sixth month period of the mine operations, from the commencement of the haulage operations until the haulage operations cease.
7.	<p>Pay a monetary contribution to Rockhampton Regional Council (quoting RPI17-001, application D8-2017) towards increased maintenance and rehabilitation of the local government road network within the PLA at a rate of \$0.433 \$0.0523 per tonne of material hauled on the local road network in accordance with the Amended Traffic Impact Assessment (Rev A) by McMurtrie Consulting Engineers dated 21 May 2021.</p> <p>Note: This monetary contribution shall be indexed based on the Road and Bridge Construction Index, Queensland – Class 3101, published quarterly by the Australian Bureau of Statistics (ABS Cat No. 6427, Series ID A2333727L) to the date of payment.</p>	First day of every sixth month period of the mine operations, from the commencement of the haulage operations until the haulage operations cease.
8.	Undertake road upgrade works for the State controlled network at the locations set out in Table 1 of the Haul Route Road Impact Assessment, prepared by McMurtrie Consulting Engineers, dated 18 April 2017 and generally in accordance with the following plans for each respective location (refer Attachment 2): Burnett Highway and Gordon Lane Intersection – Swept Path and Roadworks Layout Plan – Sheet 2 of 2,	Prior to commencement of any haulage from the site.

	<p>prepared by McMurtrie Consulting Engineers, drawing number 1021617-5002, dated 13/04/2017, revision A; and</p> <p>Burnett Highway and Razorback Road Intersection – Swept Path and Roadworks Layout Plan – Sheet 2 of 2, prepared by McMurtrie Consulting Engineers, drawing number 1021617-7002, dated 13/04/2017, revision A.</p>	
9. 8.	<p>Provide documentation to Department of Transport and Main Roads (such as weigh bridge statements or similar) verifying the quantity of material that is extracted and transported from the site (and onto the state-controlled road network). The information is to be provided to Transport and Main Roads at fitzroydistrict@tmr.qld.gov.au and quoting RPI17-001, reference number TMR20-031707.</p>	<p>First day of every <i>sixth twelfth</i> month period of the mine operations, from the commencement of the haulage operations until the haulage operations cease.</p>
10.9.	<p>Pay a monetary contribution to the Department of Transport and Main Roads (contact fitzroydistrict@tmr.qld.gov.au and quoting RPI17-001, reference number TMR20-031707) towards increased maintenance and rehabilitation of the State-controlled Road network within the PLA at a rate of:</p> <p>\$0.6302 per tonne of material hauled on State-controlled roads.</p> <ul style="list-style-type: none"> • \$10,273.00 (once off); and • \$4,342.00 per annum thereafter. <p>Note: This monetary contribution shall be indexed based on the Road and Bridge Construction Index, Queensland – Class 3101, published quarterly by the Australian Bureau of Statistics (ABS Cat No. 6427, Series ID A2333727L) to the date of payment.</p>	<p>First day of every <i>sixth twelfth</i> month period of the mine operations, from the commencement of the haulage operations until the haulage operations cease.</p>
11.10	<p>There must be no worsening to the water quantity and quality coming out of the mine site post development compared to that of the pre-development scenario in accordance with the Environmental Authority Amendment approval.</p>	<p>At all times.</p>

Attachment A: Description of subject land

Part of Lot 107 on CP881492 - Private Rolling Term Lease (S C Larson and T A Larson);
Part of Gordon Lane (D) – Rockhampton Regional Council;
Lot 1 on MPH11169 - Rockhampton Regional Council;
Part of Lot 203 on RN1556 (A, B, C, D and E) - Rockhampton Regional Council;
Part of USL Meinberg Crossing Dee River – State of Queensland;
Part of USL Mundic Creek - State of Queensland;
Part of USL Shepherd Gully - State of Queensland;
Part of USL Dee River - State of Queensland;
Part of Lot 1 on RP860374 (includes off lease haul route) - State of Queensland;
Lot 3 on RP601353 - State of Queensland;
Lot 3912 on MPH10386 - State of Queensland;
Lot 1 on MPH10729 - State of Queensland;
Part of Lot 1 on MPH10396 - State of Queensland;
Lot 1 on MPH10479 - State of Queensland;
Part of Lot 1 on MPH10827 - State of Queensland;
Lot 1 on MPH10850 - State of Queensland;
Part of Lot 1 on MPH10966 - State of Queensland;
Lot 1 on MPH11057 - State of Queensland;
Lot 2 on MPH11057 - State of Queensland;
Lot 1 on MPH11115 - State of Queensland;
Part of Lot 1 on MPH11627 - State of Queensland;
Part of Lot 1 on MPH11642 - State of Queensland;
Lot 1 on MPH11780 - State of Queensland;
Part of Lot 1 on MPH12108 - State of Queensland;
Lot 1 on MPH12202 - State of Queensland;
Lot 1 on MPH25348 - State of Queensland;
Lot 1 on MPH25461 - State of Queensland;
Part of Lot 1 on MPH25473 - State of Queensland;
Lot 1 on MPH25494 - State of Queensland;
Part of Lot 102 on USL42977 - State of Queensland;
Part of Lot 3 on USL42977 - State of Queensland;
Part of Lot 103 on USL42977 (A, B, C) - State of Queensland;
Lot 118 on USL42984 - State of Queensland;
Lot 1197 on MPH25518 - State of Queensland;
Part of Lot 12 on USL47036 - State of Queensland;
Lot 1341 on MPH25518 - State of Queensland;
Lot 1342 on MPH25518 - State of Queensland;
Lot 1463 on MPH10760 - State of Queensland;
Lot 17 on USL42984 - State of Queensland;
Lot 2 on MPH10850 - State of Queensland;
Lot 2 on MPH11057 - State of Queensland;
Lot 1 on MPH11057 - State of Queensland;
Part of Lot 2 on MPH25461 - State of Queensland;

Part of Lot 2452 on MPH11067 - State of Queensland;
Lot 3273 on MPH11435 - State of Queensland;
Lot 3274 on MPH11435 - State of Queensland;
Part of Lot 3275 on MPH11435 - State of Queensland;
Part of Lot 3276 on MPH11435 - State of Queensland;
Lot 3469 on MPH11435 - State of Queensland;
Part of Lot 5164 on MPH10386 - State of Queensland;
Lot 3912 on MPH10386 - State of Queensland;
Lot 6 on USL42977 - State of Queensland;
Lot 69 on USL42977 - State of Queensland;
Lot 60 on USL42977 - State of Queensland;
Lot 63 on USL42977 - State of Queensland;
Lot 64 on USL42977 - State of Queensland;
Lot 65 on USL42977 - State of Queensland;
Lot 66 on USL42977 - State of Queensland;
Lot 67 on USL42977 - State of Queensland;
Lot 68 on USL42977 - State of Queensland;
Lot 77 on USL42977 - State of Queensland;
Part Lot 90 on P42319 - State of Queensland;
Part Lot 19 on RP602104 - State of Queensland;
Part Lot 18 on RP602104 - State of Queensland;
Part Lot 17 on RP602104 - State of Queensland;
Part Easement A in Lot 203 on RN1556 on SP164788 – Telstra Corporation Ltd on State land
and Rockhampton Regional Council land;
Easement B in Lot 1 on RP860374 - Telstra Corporation Ltd on State land.

Attachment 1

Table 1: Approved activities – all within the Priority Living Area

Activity Type Number	Real Property Identification	Proposed Resource Activity by Lot	Within Mining Lease Number	PLA Impacted Land Area (hectares)
1	Lot 107 on CP881492	Mining resource for extraction, rehabilitation, possible future exploration	5589, 5633, 5634	43
1	Lot 69 on USL42977	Mining resource for extraction, rehabilitation, possible future exploration	5589	0.11
1	Lot 60 on USL42977	Mining resource for extraction, rehabilitation, possible future exploration	5589	0.1
1	Lot 63 on USL42977	Mining resource for extraction, rehabilitation, possible future exploration	5649	0.225
1	Lot 64 on USL42977	Mining resource for extraction, rehabilitation, possible future exploration	5649	0.387
1	Lot 65 on USL42977	Mining resource for extraction, rehabilitation, possible future exploration	5649	0.09
1	Lot 66 on USL42977	Mining resource for extraction, rehabilitation, possible future exploration	5649	0.875
1	Lot 67 on USL42977	Mining resource for extraction, rehabilitation, possible future exploration	5649	0.095
1	Lot 68 on USL42977	Mining resource for extraction, rehabilitation, possible future exploration	5649	0.09
1	Lot 90 on P42319	Mining resource for extraction, rehabilitation, possible future exploration	5589	17.5
2	Lot 1 on RP860374 (include off lease haul route)	Haul road, mine access road, mining resource for extraction, rehabilitation, possible future exploration, mineral processing and treatment plant facility	5613, 5614, 5659, 5660, 5589	110.4
3	Lot 12 on USL47036 (replaced by Lot 101 on SP139776)	Haul road, mining resource for extraction, rehabilitation, tailings storage facility, possible future exploration and rehabilitation	5589, 5608, 5609, 5612, 5615, 5616, 5617, 5618, 5619, 6521, 5622, 5623, 5624, 5625, 5626, 5627, 5628, 5633,	333.3

			5634, 5635, 5648, 5649, 5658, 6692	
4	Lot 3 on RP601353	Haul road, mining resource for extraction, rehabilitation, possible future exploration, mineral processing and treatment plant facility	5613, 5614, 5659, 5660	34
5	Lot 1 on MPH 10729	Haul road, mining resource for extraction, possible future exploration and rehabilitation	5589	0.782
5	Lot 2 on MPH11057	Haul road, mining resource for extraction, possible future exploration and rehabilitation	5589	0.45
5	Lot 1 on MPH11057	Haul road, mining resource for extraction, possible future exploration and rehabilitation	5590	0.68
5	Lot 103 on USL42977 (A,B,C)	Haul road, mining resource for extraction, possible future exploration and rehabilitation	5589, 5628	3.01
6	Lot 1 on MPH10479	Haul road, possible future exploration and rehabilitation	5589	1.214
6	Lot 1 on MPH10850	Haul road, possible future exploration and rehabilitation	5589	0.622
6	Lot 77 on USL42977	Haul road, possible future exploration and rehabilitation, haul road	5589, 5628	1.12
7	Lot 3 on USL42977	Haul road, possible future exploration and rehabilitation	5589	0.401
7	Lot 203 on RN1556 (A,B,C, D, E)	Possible future exploration and rehabilitation	5620, 5635, 5660	35
7	USL Meinberg Crossing Dee River	Possible future exploration and rehabilitation	5589	7.72
7	USL Mundic Creek	Possible future exploration and rehabilitation	5589	
7	USL Shepherd Gully	Possible future exploration and rehabilitation	5589	
7	USL Dee River	Possible future exploration and rehabilitation	5602	
7	Lot 1 on MPH10396	Possible future exploration and rehabilitation	5589	
7	Lot 1 on MPH10827	Possible future exploration and rehabilitation	5589	0.32
7	Lot 1 on MPH10827	Possible future exploration and rehabilitation	5589	0.38
7	Lot 1 on MPH10966	Possible future exploration and rehabilitation	5589	0.26
7	Lot 1 on MPH11115	Possible future exploration and rehabilitation	5589	0.42
7	Lot 1 on MPH11627	Possible future exploration and rehabilitation	5589	0.43
7	Lot 1 on MPH11642	Possible future exploration and rehabilitation	5589	1.1
7	Lot 1 on MPH11780	Possible future exploration and rehabilitation	5589	0.4

7	Lot 1 on MPH12108	Possible future exploration and rehabilitation	5602	0.14
7	Lot 1 on MPH12202	Possible future exploration and rehabilitation	5589	2.023
7	Lot 1 on MPH25348	Possible future exploration and rehabilitation	5589	0.202
7	Lot 1 on MPH25461	Possible future exploration and rehabilitation	5589	0.405
7	Lot 1 on MPH25473	Possible future exploration and rehabilitation	5589	0.26
7	Lot 1 on MPH25494	Possible future exploration and rehabilitation	5589	0.463
7	Lot 102 on USL42977	Possible future exploration and rehabilitation	5589	0.21
7	Lot 118 on USL42948	Possible future exploration and rehabilitation	5620	0.986
7	Lot 17 on USL42984	Possible future exploration and rehabilitation	5620	0.99
7	Lot 2 on MPH10850	Possible future exploration and rehabilitation	5589	0.66
7	Lot 2 on MPH25461	Possible future exploration and rehabilitation	5589	0.13
7	Lot 6 on USL42977	Possible future exploration and rehabilitation	5589	0.11
8	Gordon Lane (D)	Inside mining lease but outside any location of current or future impact	5620	0.09
8	Lot 1197 on MPH25518	Inside mining lease but outside any location of current or future impact	5620	0.197
8	Lot 1341 on MPH25518	Inside mining lease but outside any location of current or future impact	5620	0.202
8	Lot 1342 on MPH25518	Inside mining lease but outside any location of current or future impact	5620	0.202
8	Lot 1463 on MPH10760	Inside mining lease but outside any location of current or future impact	5620	0.164
8	Lot 2452 on MPH11067	Inside mining lease but outside any location of current or future impact	5620	0.11
8	Lot 3273 on MPH11435	Inside mining lease but outside any location of current or future impact	5620	0.341
8	Lot 3274 on MPH11435	Inside mining lease but outside any location of current or future impact	5620	0.341
8	Lot 3275 on MPH11435	Inside mining lease but outside any location of current or future impact	5620	0.33
8	Lot 3276 on MPH11435	Inside mining lease but outside any location of current or future impact	5620	0.1
8	Lot 3469 on MPH11435	Inside mining lease but outside any location of current or future impact	5620	0.24
8	Lot 5164 on MPH10386	Inside mining lease but outside any location of current or future impact	5620	0.012
8	Lot 3192 on MPH10386	Inside mining lease but outside any location of current or future impact	5620	0.012

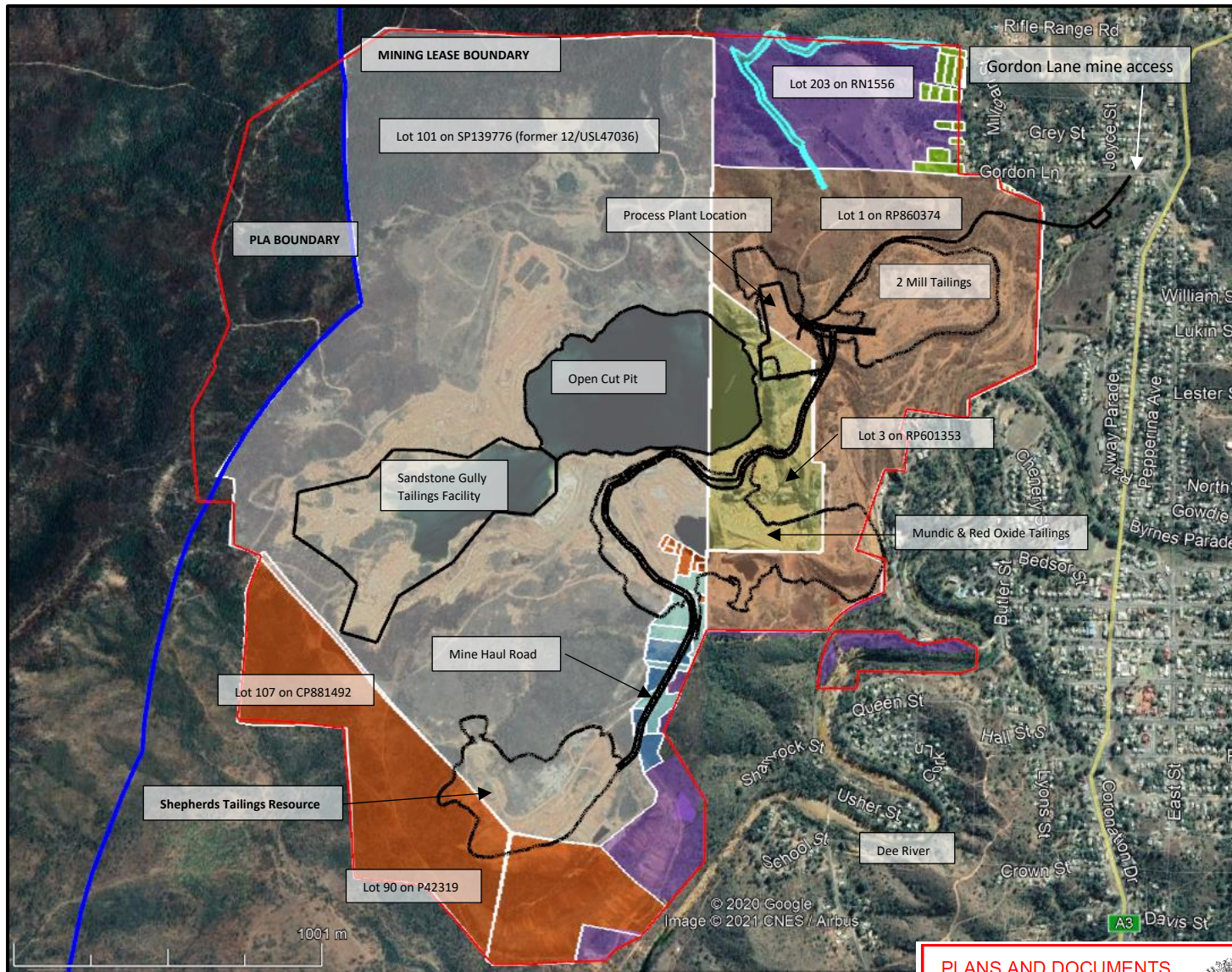
8	Lot18 on RP602104	Inside mining lease but outside any location of current or future impact	5660	0.1
8	Lot17 on RP602104	Inside mining lease but outside any location of current or future impact	5660	0.036
8	Lot 1 on MPH11169	Inside mining lease but outside any location of current or future impact	5620	0.14
8	Lot19 on RP602104	Inside mining lease but outside any location of current or future impact	5660	0.1
9	Easement A in Lot 203 on RN1556 on SP164788	Inside mining lease but outside any location of current or future impact	5620, 5635, 5660	2.03
9	Easement B in Lot 1 on RP860374	Inside mining lease but outside any location of current or future impact	5635	0.08
TOTAL				605.887
Activity Type by Number (reference to Plan HERITAGE MINERALS ACTIVITY BY LOT AND PLAN - AMENDED)				
1	Mining resource for extraction, rehabilitation, possible future exploration			
2	Haul road, mine access road, mining resource for extraction, rehabilitation, possible future exploration, mineral processing and treatment plant facility			
3	Haul road, mining resource for extraction, rehabilitation, tailings storage facility, possible future exploration and rehabilitation			
4	Haul road, mining resource for extraction, rehabilitation, possible future exploration, mineral processing and treatment plant facility			
5	Haul road, mining resource for extraction, possible future exploration and rehabilitation			
6	Haul road, possible future exploration and rehabilitation			
7	Possible future exploration and rehabilitation			
8	Inside mining lease but outside any location of current or future impact			
9	Inside mining lease but outside any location of current or future impact			

Table 2: Definitions

Resource activity	Definition
Mining resource for extraction	A Mineral Resource that has been sufficiently defined to be incorporated into a mine plan for extraction – Ore Reserve (refer to the definitions for ‘Mineral Resource’ and ‘Ore Reserve’ in the <i>Australasian Code for Reporting of exploration Results, mineral Reserves and Ore Reserves 2012 – JORC Code Australasian Institute of Mining and Metallurgy</i>) and specifically, gold, and copper concentrate sulphate and pyrite for sale.
Rehabilitation	Post mining, land is to be rehabilitated in accordance with the Environmental Authority conditions governing the operation.
Possible future exploration	Exploration activity using standard industry methods may be required in the future to determine if additional mineral resources are present.
Mineral processing plant	The processing of extracted mineral resource using standard industry techniques to recover gold, and copper sulphide sulphate and pyrite for sale.
Haul road	The haulage route for transporting extracted resource to the mineral processing plant by trucking and the trucking of processed product from the mine site.
Tailings storage facility	The containment facility to store reject material from the mineral processing plant in accordance with the Environmental Authority conditions.





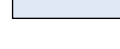




Attachment 2: Approved plans and specifications

HERITAGE MINERALS ACTIVITY BY LOT AND PLAN (AMENDED)



Heritage Minerals resource activity footprint (May 2021)

LEGEND

	1. Mining resource for extraction, rehabilitation and possible future exploration Lot and Plan: 101/CP881492, 69/USL42977, 60/USL42977, 63/USL42977, 64/USL42977, 65/USL42977, 66/USL42977, 67/USL42977, 68/USL42977, 90/P42319
	2. Mineral processing, haul road, mining resource for extraction, possible future expln, rehabilitation, tailings storage facility Lot 1 on Plan RP860374
	3. Mining resource, mine haul road, rehabilitation, future exploration, tailings storage 101/SP139776 (former 12/USL47036 in PLA)
	4. Mine haul road, process plant, mining resource for extraction, possible future expln, rehabilitation, tailings storage 3/RP601353
	5. Mine haul road, mining resource for extraction, possible future exploration, rehabilitation 1/MPH10729, 2/MPH11057, 1/MPH11057, 103/USL42977 Part A, B, C
	6. Mine haul road, possible future exploration, rehabilitation 1/MPH10479, 1/MPH10850, 3/USL42977 B, 77/USL42977
	7. Possible future exploration, rehabilitation 203/RN1556 A, B, C, D, E, Dee River in MLS602, 1/MPH10396, 1/MPH10827, 1/MPH10966, 1/MPH11115, 1MPH/1627, 1/MPH1642, 1/MPH1780, 1MPH12108, 1/MPH12202, 1/MPH25348, 1/MPH25461,
	8. Inside mining lease but outside any location of current or future impact 3912/MPH10386, 1197/MPH25518, 1341/MPH25518, 1342/MPH25518, 1463/MPH10760, 2452/MPH1067, 3273/MPH11435, 3274/MPH11435, 3275/MPH11435, 3276/MPH11435, 3469/MPH11435, 5164/MPH10386, 18/RP602104, 17/RP602104, 1/MPH11169, 19/RP602104, Gordon Lane Part D
	9. Easements Access A on SP164788 on Lot 203 on RN1556, Access B in Lot 1 on RP860374

PLANS AND DOCUMENTS referred to in the RIDA

RIDA ref: .RP117/001

Date: 28 September 2021

