

## REGIONAL INTERESTS DEVELOPMENT APPROVAL (RIDA)

### RPI15/001 TEC COAL – MEANDU MINE SURFACE RIGHTS EXTENSION PROJECT

Given under the *Regional Planning Interests Act 2014* section 53 on 30 March 2015.

#### Description of the land

Real property description: Part of Lot 289 on FTY1859  
Local Government Area: Toowoomba Regional Council

#### Approved activities

Resource activities (open cut coal mine and associated infrastructure) as set out in Table 1 below. Definitions of the resource activities are included in **Attachment 1**.

**Table 1: Approved activities**

Resource activity	Location	Total area of disturbance (Ha)
Open cut mine and associated infrastructure	Part of Lot 289 on FTY1859	98.11
Vegetated buffer		27.29
Fire break, fence and access track		4.27
<b>Total area of disturbance</b>		<b>129.67</b>

#### General Advice

This approval does not relieve the applicant of the obligation to obtain all approvals and licenses from all relevant authorities required under any Act.

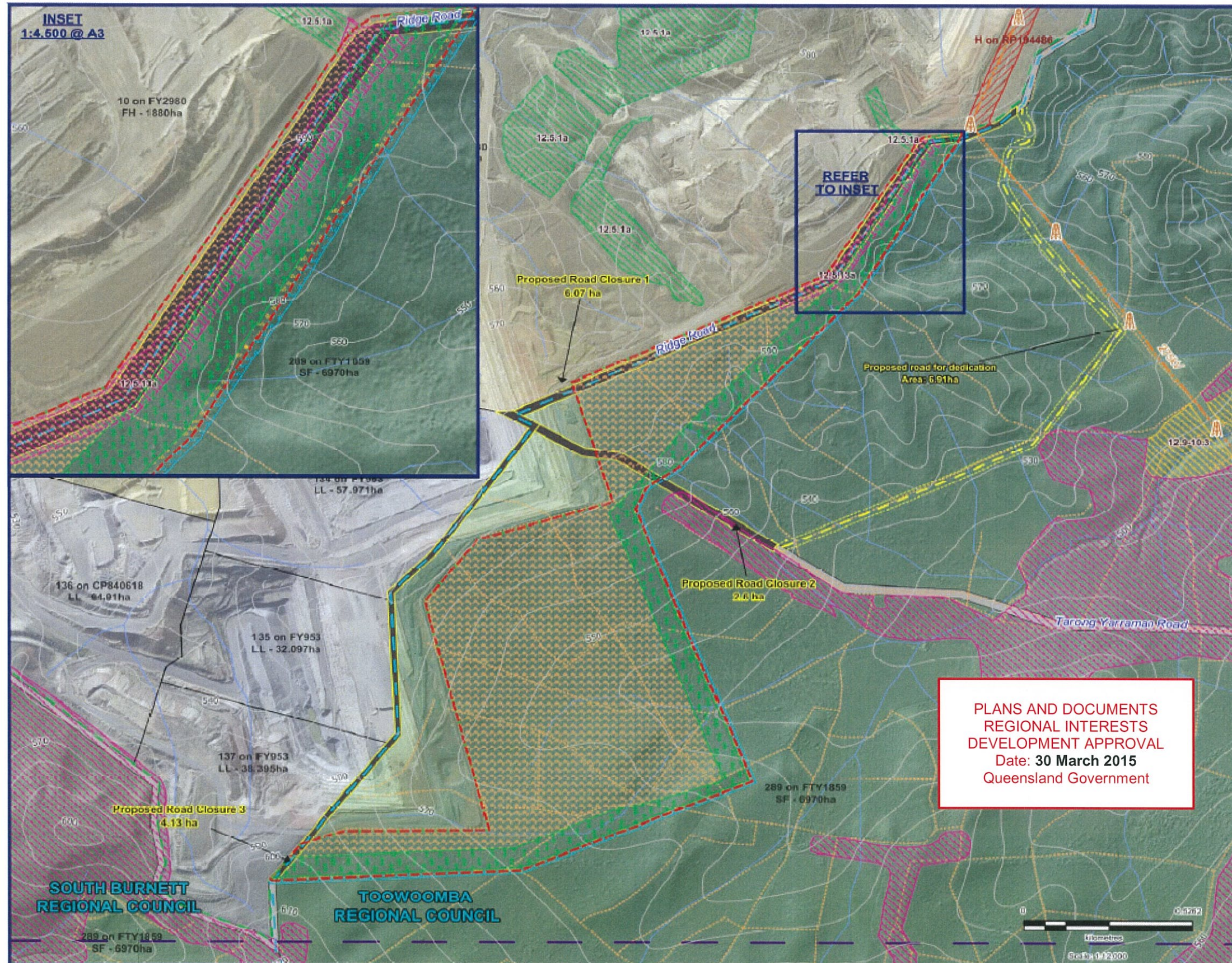
#### Regional interests conditions

A person who is the holder of, or is acting under, this RIDA must not contravene a condition of this approval.

Condition number	Condition	Timing for condition
1.	Carry out the approved activity and disturbance of land generally in accordance with: <ul style="list-style-type: none"> <li>a) the activities identified in <b>Table 1: Approved activities</b>, as defined in <b>Attachment 1: Definitions</b></li> <li>b) the approved drawing, <i>Meandu Mine Surface Rights Extension Project Overview</i>, V3.1, 3 November 2014 (<b>See Attachment 2: Approved Plan</b>).</li> </ul>	For the duration of the conduct of the approved activity
2.	Maintain the approved activity generally in accordance with the approved drawing ( <b>Attachment 2: Approved Plan</b> ) and the approved activities ( <b>Table 1: Approved activities</b> ).	For the duration of the conduct of the approved activity
3.	<ul style="list-style-type: none"> <li>a) Any disturbance of land in accordance with this RIDA is not to impact adversely on other priority agricultural land uses in the PAA.</li> <li>b) All complaints received, and resulting actions taken, about the impact of the approved activities on the priority agricultural land uses in the PAA must be recorded. The record must include:               <ul style="list-style-type: none"> <li>i) name, address and contact number of the complainant</li> <li>ii) time and date of complaint</li> <li>iii) reasons for the complaint</li> <li>iv) investigations undertaken</li> <li>v) conclusions formed</li> <li>vi) actions taken to resolve the complaint</li> <li>vii) any abatement measures implemented</li> <li>viii) person responsible for resolving the complaint.</li> </ul> </li> <li>c) The records of any complaints received and recorded in accordance with this condition must be provided to the chief executive within three business days of receipt of the complaint.</li> </ul>	While construction is occurring and then for the duration of the conduct of the approved activity

## Attachment 1: Definitions

Activity	Definition
Open cut mine	Mining activities may include but are not limited to an open pit or trench at the surface from which coal is extracted, vegetation removal and topsoil stripping, construction of safety bunds, overburden removal and rehabilitation.
Associated infrastructure	Includes plant, equipment and infrastructure that are ancillary to the mining activities. This includes but is not limited to fencing and the extension of existing haul roads.
Vegetated buffer	A vegetated area separating the mining activities from the adjacent land use (in this case the Yarraman State Forest).
Fire break	An obstacle to the spread of fire, such as a strip of open space in a forest.
Access track	A gravel-surfaced roadway to provide vehicular access.
Other terms	Definition
Chief Executive	Chief Executive responsible for administering the <i>Regional Planning Interests Act 2014</i> .



## Meandu Mine Surface Rights Extension Project Overview

Powerlink		Properties Parcels by Tenure	
	Powerlink Tower		FH
	Powerlink Feeders		LL
	Powerlink Easements		SF
	Proposed Gazette Road		LGA
	Road Corridor Buffer	<b>Clearance Areas</b>	
	Tracks		Unharvested
	Roads		HQ Clear Zone
	Road Closures		Fence Clear Zone
<b>Mining</b>		<b>Environmental Remnant Vegetation</b>	
	Surface Rights Extension		E-dom
	Meandu Surface Rights		LeastC
	Mining Lease 6674		O-dom
	Mining Area		Watercourse
			Contours

Based on or contains data provided by the State of Queensland (Department of Environment and Resource Management) 2010. In consideration of the State permitting use of this data you acknowledge and agree that the State gives no warranty in relation to the data (including accuracy, reliability, completeness, currency or suitability) and accepts no liability (including without limitation, liability in negligence) for any loss, damage or costs (including consequential damage) relating to any use of the data. Data must not be used for direct marketing or be used in breach of the privacy laws.

(i) Stanwell Corporation accepts no responsibility for any loss or damage suffered however arising to any person or corporation who may use or rely on this plan in contravention of the terms of this clause or clauses (ii) & (iii)

(ii) The dimensions, areas, number of lots, size & location of corridor information are approximate only and may vary.

(iii) This plan may not be copied unless this note is included.

Source: Stanwell Corporation  
DNRM  
Access  
Revision: V3.1  
Projection: Lat 1 Long - GDA 94  
Date: 3 November 2014  
Issued To: Scott Cullen

1:12,000 @A3

**PLANS AND DOCUMENTS  
REGIONAL INTERESTS  
DEVELOPMENT APPROVAL**  
Date: 30 March 2015  
Queensland Government



© GIS/Stanwell Spatial/Projects/Meandu Surface Extension/Master Map