

REGIONAL INTERESTS DEVELOPMENT APPROVAL (RIDA)

RPI14/004 ACACIACOAL – COMET RIDGE PROJECT (CRP)

Given under the *Regional Planning Interests Act 2014* section 53 on 29 January 2015.

Description of the land

- Real property description: Part of Lot 2 on HT 56 and Part of Lot 3 on SP 185510
- Local Government Area: Central Highlands Regional Council

Approved activities

Resource activities (open cut coal mine and associated infrastructure) as set out in Table 1 below. Definitions of the resource activities are included in **Attachment 1**.

Table 1: Approved activities

Resource activity	Location	Total area of disturbance (Ha)
Open cut mine pit (part of Boundary North Pit)	Lot 2 HT56	9.7
Open cut mine pit (part of Boundary South Pit)		6.9
Sediment dams including drains		1.7
Spoil dumps		39
Other (contingency)		2.7
Total area of disturbance for Lot 2 on HT56		60
Open cut mine pit (part of Boundary North Pit)	Lot 3 SP185510	14.3
Open cut mine pit (part of Boundary South Pit)		13.3
Open cut mine pit (Triumph Pit)		45
Open cut mine pit (George Pit)		73.7
Spoil dumps		95.8
Coal handling processing plant		0.2
Product coal stockpile and truck load out facility		0.2
Run of mine pad		1.3
Make up water dam		5.1
Dirty water dam		3.3
Sediment dams including drains		4.3
Co-disposal handling and storage facilities		33.2
Haul roads		28.5
Workshop and site offices		2.4
Other (contingency)	19.4	
Total area of disturbance on Lot 3 SP 185510		340
Total area of disturbance		400

General Advice

This approval does not relieve the applicant of the obligation to obtain all approvals and licenses from all relevant authorities required under any Act.

Regional interests conditions

A person who is the holder of, or is acting under, this RIDA must not contravene a condition of this approval.

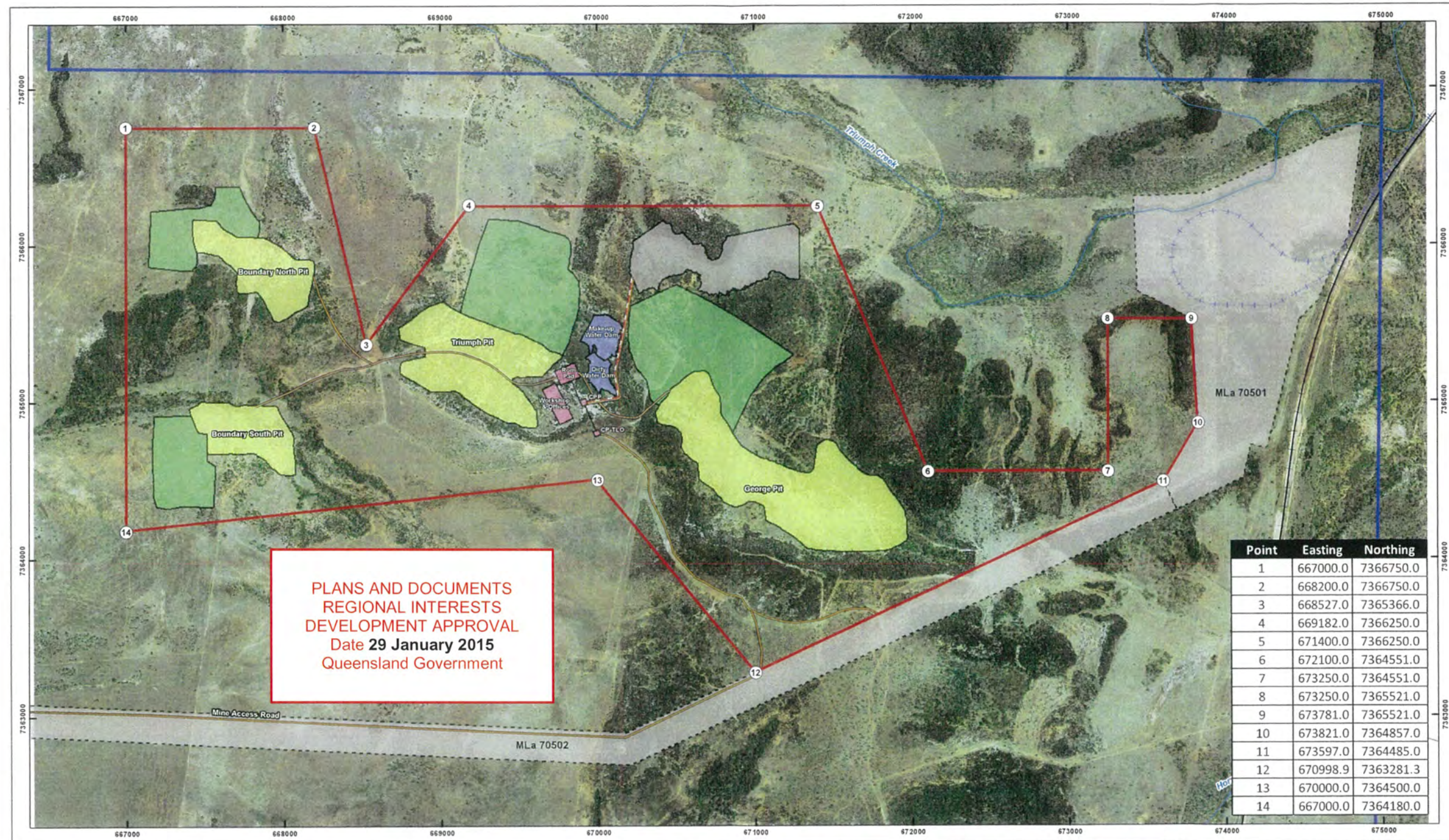
Condition number	Condition	Timing for condition
1.	<p>Carry out the approved activity and disturbance of land generally in accordance with:</p> <ul style="list-style-type: none">a) The activities identified in Table 1: Approved activities, as defined in Table 2: Definitions.b) The approved drawing, <i>Proposed Mining Lease Application Layout Plan October 2014, CRP-RLMS018 Rev18 (See Attachment 2: Approved Plan)</i>	For the duration of the conduct of the approved activity
2.	Maintain the approved activity generally in accordance with the approved drawing (Attachment 2: Approved Plan) and the approved activities (Table 1: Approved activities).	For the duration of the conduct of the approved activity
3.	<ul style="list-style-type: none">a) Any disturbance of land in accordance with this RIDA is not to impact adversely on other priority agricultural land uses in the PAA.b) All complaints received, and resulting actions taken, about the impact of the approved activities on the priority agricultural land uses in the PAA must be recorded. The record must include:<ul style="list-style-type: none">i) name, address and contact number of the complainantii) time and date of complaintiii) reasons for the complaintiv) investigations undertakenv) conclusions formedvi) actions taken to resolve the complaintvii) any abatement measures implementedviii) person responsible for resolving the complaintc) The records of any complaints received and recorded in accordance with this condition must be provided to the chief executive on request.	While construction is occurring and then for the duration of the conduct of the approved activity

Attachment 1: Definitions

Activity	Definition
Spoil dump	A pile built of accumulated overburden or other waste as it is removed during mining.
Open cut mining pit	An open pit or trench at the surface from which rock or minerals is extracted. Includes supporting infrastructure such as haul roads, bunding, soil stockpiles, mobile breaker and screening plant, hardstands and water management structures.
Product coal stockpile and truck load out facility	Stockpiles of raw coal and product removed from the pit and includes associated infrastructure required to load and transport the coal.
Run of mine pad	Hard stand area used to stockpile raw coal.
Coal handling processing plant	Infrastructure necessary to support the coal handling processing plant e.g. wash plant, water dam, crushers, conveyor belts, stackers and reclaimers.
Water and sediment management system	A system of interconnected channels, associated infrastructure and dams to manage erosion and sediment run off.
Make up water dam	A body of water confined by a structure in accordance with approved regulations and conditions.
Dirty water dam	A body of water confined by a structure in accordance with approved regulations and conditions.
Co-disposal and storage facilities	An out of pit facility for storing and disposing of rejects and tailings and associated infrastructure.
Sediment dam	The banking of rock and/or earth to create a hold area for water to manage erosion and sediment run off.
Mine infrastructure area	Mine related infrastructure to support the mine. Includes offices, workshops and associated infrastructure.
Haul road	A road constructed to facilitate the trucking of coal product or overburden.
Workshop and site office	Infrastructure necessary to support the storage, maintenance and repair of equipment and the administrative site requirements.
Associated infrastructure	Includes plant, equipment and infrastructure that are ancillary to the mine.
Other terms	Definition
Chief Executive	Chief Executive responsible for administering the <i>Regional Planning Interests Act 2014</i> .

Attachment 2: Approved Plan

Proposed Mining Lease Application Layout Plan, October 2014, CRP-RLMS018 Rev18

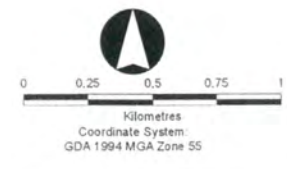


NOTES
 Terminology: Dept. of Mines & Energy, 2014
 Imagery: NearMap, April 2011
 Proposed Mining Lease Boundary: Acacia Coal, 10/09/2014
 Potential Pits: Acacia Coal, 28/06/2014
 Springsure Corridor: Bandanna Energy, 24/02/2014

DISCLAIMER
 In preparing this map, RLMS have endeavoured to ensure that the data and information are as accurate and reliable as possible. However, RLMS cannot accept liability for any decisions or actions of whatever kind or nature based on this study. RLMS expressly disclaims any loss or damage that may arise therefrom.

V:\SP_Z:\Clients\Acacia_Coal\12-0028_Mapping_Request\Maping\Workspaces\Operations_Layout_018.mxd
 created on 17/10/2014 by KR

- LEGEND**
- Comet Ridge Project**
 - EPC 1230
 - Proposed Mining Lease Area
 - Open Cut Pits
 - Dams
 - Dump
 - Co-disposal Facility
 - Other Infrastructure
 - Springsure Creek Coal Project**
 - Proposed Triumph Creek Rail Loop
 - Springsure Creek Coal Mining Lease Area
 - Co-disposal Pipeline
 - Sediment Dams & Diversions
 - Conveyor
 - Road
 - Existing Railway
 - Minor Watercourse



CLIENT **ACACIA COAL LIMITED**
 PROJECT **COMET RIDGE**
 FIGURE 4 **PROPOSED MINING LEASE APPLICATION LAYOUT PLAN**
 DATE **OCTOBER 2014** REF: CRP-RLMS018 Rev16

