

REGIONAL INTERESTS DEVELOPMENT APPROVAL (RIDA) -

RPI21/031 Santos – Hector South East 2

(Given under section 53 of the *Regional Planning Interests Act 2014*)

Date: 24 February 2022

Description of the land

Real property description: Lot 2528 on PH429

Local Government Area: Bulloo Shire Council

Approved resource activities

The approved resource activities are set out in Table 1 below.

Definitions of the approved resource activities are provided in Table 2 below.

This development approval authorises impacts on the Channel Country Strategic Environmental Area by the approved resource activities.

Table 1: Approved resource activities: Santos - Hector South East 2

Area of regional interest	Location	Resource activity	Area of disturbance (hectares)
Channel Country Strategic Environmental Area (SEA)	Lot 1 SP133822	Petroleum well and lease area	1.65
		Pipeline	25.35
		Access tracks	
		Borrow pits	
Total disturbance area			27 ha

Table 2: Definitions of approved resource activities

Resource activity	Definition
Petroleum well and lease area	<ul style="list-style-type: none">Petroleum well and associated well lease to accommodate modular drilling and ancillary equipment, including a derrick, power generators, pipe handling equipment, tanks, chemical injection skid, drilling sumps and associated stockpile, flares and office areas.
Pipeline	<ul style="list-style-type: none">11 kms of new buried oil flowline consisting of a 100 mm diameter steel pipe, buried to a depth of around 750 mm with a right-of-way width of approximately 15 m for installation.Includes truck-around areas, a bypass road, mid-line risers and pigging facilities.

Access Tracks	<ul style="list-style-type: none"> • 1.3 kms of new access tracks and road construction, up to 13 m wide, to accommodate a 6 m wide roadway and 3.5 m wide table drains either side of the roadway. • The roadway graded and capped with clay or similar locally available borrow pit material. • Designed to convey natural surface water flows consistent with the existing hydrology and will not be accessed during prolonged wet weather.
Two Borrow Pits	<ul style="list-style-type: none"> • One new borrow pit. • Extension of the existing borrow pit at the Hector South East 1 gas well • Source of material for the construction of new infrastructure and ongoing maintenance of the well lease and access tracks. • The side batters of the borrow pits will be maintained at a slope of approximately 6:1 (3:1 maximum) and the batters of the entrance/exit will be maintained at a slope of approximately 7:1.

Regional interests conditions

A person who is the holder of, or is acting under, this RIDA must not contravene a condition of this approval.

Condition number	Condition	Timing for condition
1.	Carry out the approved resource activities and disturbance of land in the Channel Country Strategic Environmental Area generally in accordance with: (a) the resource activities identified in Table 1: Approved resource activities (b) the resource activities defined in Table 2: Definitions of resource activities (c) the stamped approved plans: (i) Figure 1: Hector South East 2 and PPL 2067 Proposed Infrastructure, File No. ATP1189 026a_Rev 2 prepared by Santos Queensland, dated January 2022 (Attachment 1) (ii) Figure 2: Hector South East 2 and PPL 2067 Proposed Infrastructure and Construction Disturbance Zone, File No. ATP1189 026b_Rev 2 prepared by Santos Queensland, dated January 2022 (Attachment 1).	At all times.
2.	No construction activities are to be undertaken: (a) when surface water is present (b) during a flood event/inundation period.	As indicated.
3.	Implement measures to minimise the diversion of overland flow during construction, operation and decommissioning of the resource activity.	At all times.
4.	Develop and implement erosion and sediment controls which: (a) allows stormwater to pass through or around the site in a controlled manner and at non-erosive flow velocities (b) minimise soil erosion resulting from wind, rain and flowing water (c) minimise the duration that disturbed soils are exposed to the erosive forces of wind, rain and flowing water (d) minimise work-related soil erosion and sediment runoff (e) minimise negative impacts to land adjacent to the resource activity.	At all times.
5.	Contaminants from the resource activities must not be directly or indirectly released to a watercourse / wetland / drainage feature or to the bed or banks of a watercourse / wetland / drainage feature or to groundwater. <i>Note: Contaminants mean waste contaminants as defined in Schedule 9 of the Environmental Protection Regulation 2008.</i>	At all times.
6.	Construction and abandonment of petroleum wells to be in	At all times during

Condition number	Condition	Timing for condition
	accordance with the Department of Resources Code of Practice 'For the construction and abandonment of coal seam gas and petroleum wells in Queensland, Petroleum and Gas Inspectorate.'	construction and abandonment.
7.	Restore disturbance areas to a pre-disturbance condition.	Within twelve months of completion of resource activity.
8.	<p>Retain records of the pre-disturbance, post-reinstatement and post-restoration condition of disturbance areas and provide these to the chief executive (RPIAct@dsdilgp.qld.gov.au application reference number RPI21/031), demonstrating that the impacted land within the Channel Country Strategic Environmental Area has been returned to its pre-disturbance condition. Such records must include:</p> <ul style="list-style-type: none"> (a) photographs of the pre-disturbance site conditions (b) photographs of the post-reinstatement site conditions (c) photographs of the post-restoration site conditions (d) evidence with the records (date and GPS stamped) required by parts (a) to (c) of this condition. <p><i>Note:</i> <i>'disturbance' - means any impact to the landscape, vegetation, air quality, hydrology, habitat, or water quality that has been directly or indirectly caused by human activity associated with the resource activity.</i> <i>'pre-disturbance' - the condition of the land before any resource activities occurred.</i> <i>'post-reinstatement' - following the completion of the resource activity, being the return of the soil to its previous profile, topography and drainage</i> <i>'post-restoration' - this is the point at which the ground cover has been established and ponding, erosion, subsidence, etc has been dealt with (being a longer process than the reinstatement phase).</i></p>	Within three months of completing all post-restoration works.
9.	<p>(a) All complaints received, and resulting actions taken, about the impact of the approved resource activities on the environmental attributes in the Channel Country Strategic Environmental Area must be recorded. The record must include:</p> <ul style="list-style-type: none"> (i) name, address and contact number of the complainant (ii) time and date of complaint (iii) reasons for the complaint (iv) investigations undertaken 	(a) At all times.

Condition number	Condition	Timing for condition
	<p>(v) conclusions formed (vi) actions taken to resolve the complaint (vii) any abatement measures implemented (viii) person responsible for resolving the complaint.</p> <p>(b) Provide records of any complaints received and recorded in accordance with this condition to the chief executive at RPIAct@dsdilgp.qld.gov.au.</p> <p><i>Note: The record of complaint provided to the chief executive must state the application reference number, being RPI21/031.</i></p>	(b) Within three business days of receipt of a complaint.
10.	A full copy of the regional interests development approval must be kept on-site and available to any person(s) contracted to undertake the approved resource activities.	At all times

General Advice

It is the applicant's responsibility to ensure all relevant approvals and licenses are obtained from the applicable Local, State, and/or Federal Authorities prior to works commencing on site.

Attachment 1 - Approved plans

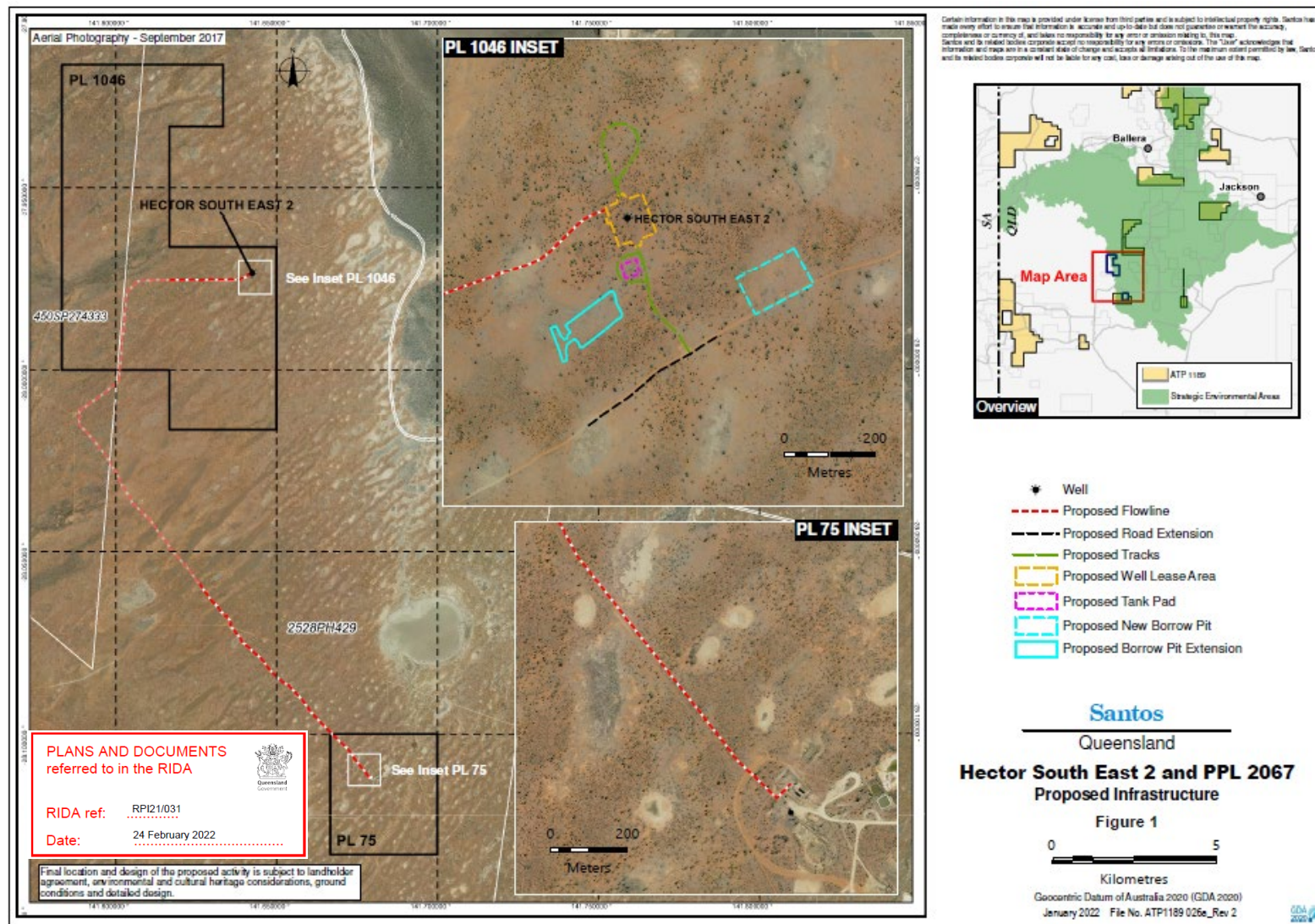


Figure 1: Hector South East 2 and PPL 2067 Proposed Infrastructure

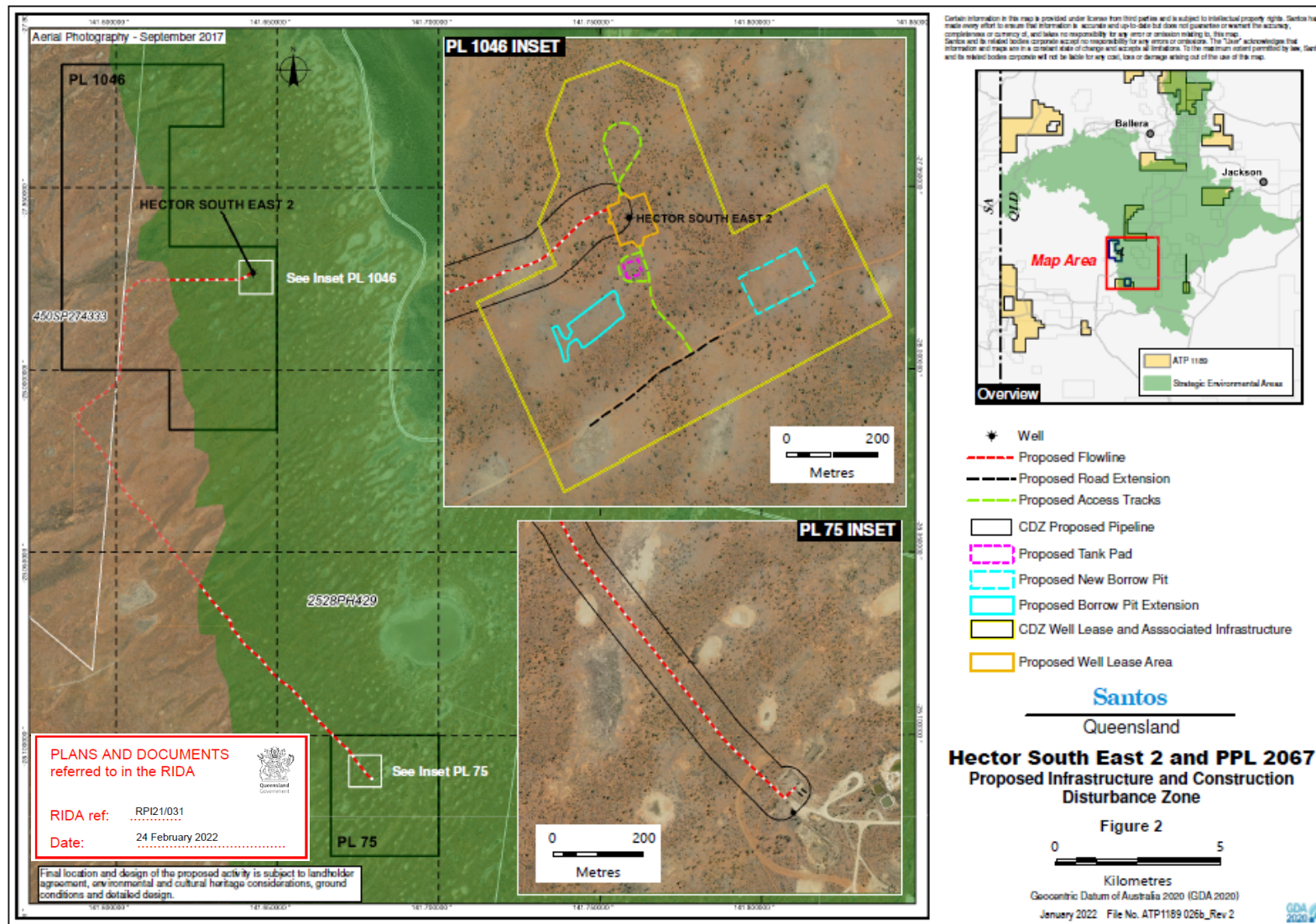


Figure 2: Hector South East 2 and PPL 2067 Proposed Infrastructure and Construction Disturbance Zone