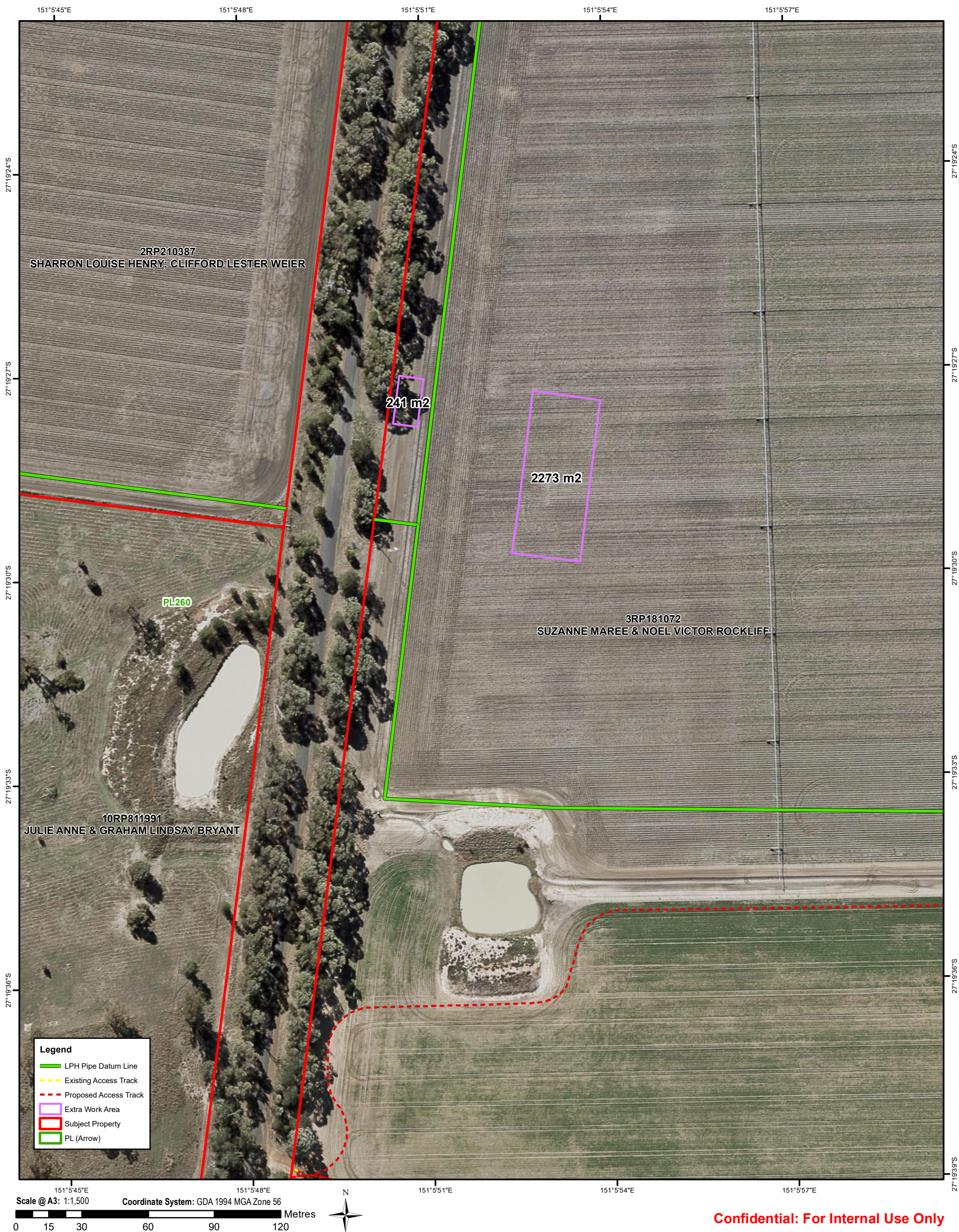


Appendix 8: EWAs associated with the LPH on subject lots



Confidential: For Internal Use Only

[illegible]

Document: V:\Products\Australia\Queensland\Surat Basin\General\210415_RITM0294107_RIDAAPP_AH\RITM0294107_Map1_3.mxd

NOT FOR CONSTRUCTION

Print Date: 22/04/2021



Scale @ A3: 1:1,000
Coordinate System: GDA 1994 MGA Zone 56
0 10 20 40 60 80 Metres



Confidential: For Internal Use Only

3	22/04/2021	Remove survey corridor	JL	XX	XX	XX	XX	AH	
2	15/04/2021	Clip survey corridor, EWA, LPH, tracks to RIDA properties	JL	XX	XX	XX	XX	AH	
1	17/03/2021	Add LPH	SL	XX	XX	XX	XX	AH	
0	16/03/2021	Show access tracks and EWA	SL	XX	XX	XX	XX	AH	
Rev	Date	Revision Description	Clp	Eng	OS	AS	AS	AS	

Based on or contains data provided by the State of Queensland. In consideration of the State permitting use of this data you acknowledge and agree that the State gives no warranty in relation to the data (including accuracy, reliability, completeness, currency or suitability) and accepts no liability (including without limitation, liability in negligence) for any loss, damage or costs (including consequential damage) relating to any use of the data. Data must not be used for direct marketing or be used in breach of the privacy laws.

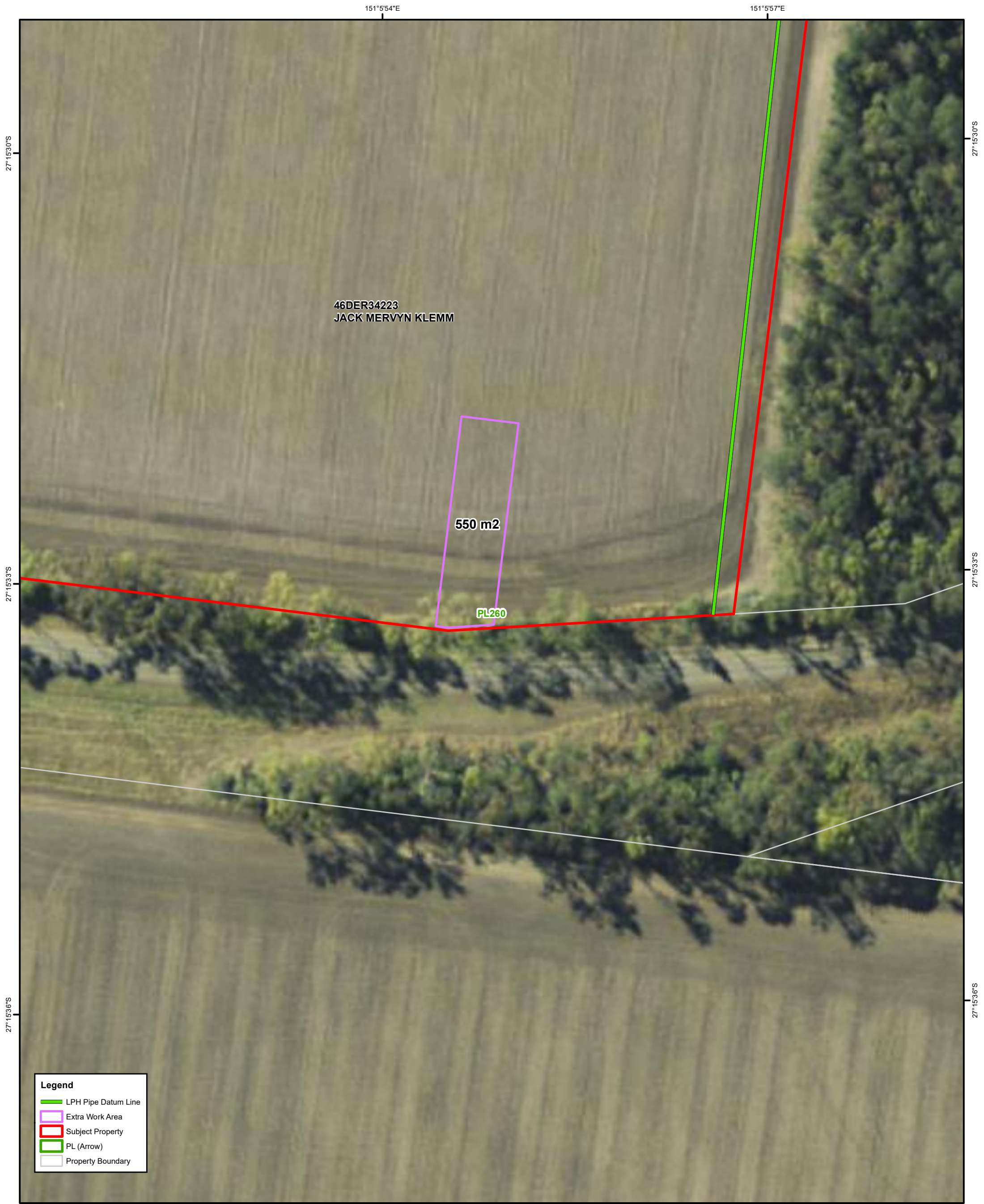
Disclaimer: While all reasonable care has been taken to ensure the information contained on this map is up to date and accurate, no warranty is given that the information contained on this map is free from error or omission. Any reliance placed on such information shall be at the sole risk of the user. Please verify the accuracy of all information prior to using it.

Note: The information shown on this map is a copyright of Arrow Energy Limited and, where applicable, its affiliates and co-venturers.


Source:
Arrow Energy Limited, Geosciences Australia
Qld Gov.

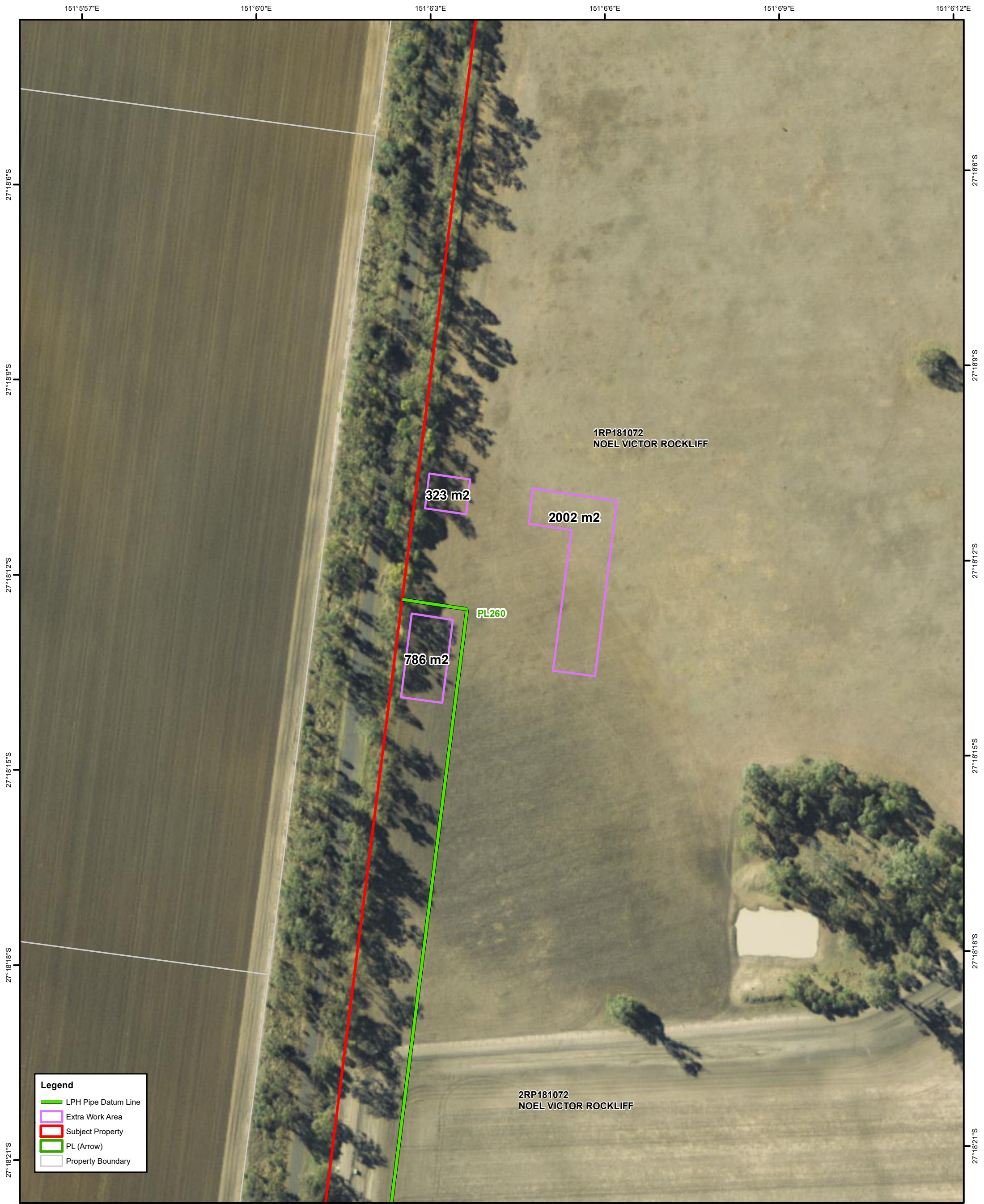
Status: IFI
Issued To: A Hall
Author: jluke

DK West - LPH
Map 3 of 5
Uncontrolled 3



Confidential: For Internal Use Only

								<p>Based on or contains data provided by the State of Queensland.</p> <p>In consideration of the State permitting use of this data you acknowledge and agree that the State gives no warranty in relation to the data (including accuracy, reliability, completeness, currency or suitability) and accepts no liability (including without limitation, liability in negligence) for any loss, damage or costs (including consequential damage) relating to any use of the data. Data must not be used for direct marketing or be used in breach of the privacy laws</p> <p>© Commonwealth of Australia (Geoscience Australia) year of publication. This material is released under the Creative Commons Attribution 3.0 Australia Licence. http://creativecommons.org/licenses/by/3.0/au/. The dimensions, areas, number of lots, size & location of corridor information are approximate only and may vary.</p> <p>Disclaimer: While all reasonable care has been taken to ensure the information contained on this map is up to date and accurate, no warranty is given that the information contained on this map is free from error or omission. Any reliance placed on such information shall be at the sole risk of the user. Please verify the accuracy of all information prior to using it.</p> <p>Note: The information shown on this map is a copyright of Arrow Energy Limited and, where applicable, its affiliates and co-venturers.</p> <p>Source: Arrow Energy Limited, Geosciences Australia Qld Gov.</p>			<p>Status: IFU Issued To:A Hall Author: jluke</p>		<p>DK West - LPH</p> <p>Map 4 of 5</p>	
3	22/04/2021	Remove survey corridor	JL	XX	XX	XX	AH			<p>Uncontrolled 3</p>				
2	15/04/2021	Clip survey corridor, EWA, LPH, tracks to RIDA properties	JL	XX	XX	XX	AH							
1	17/03/2021	Add LPH	SL	XX	XX	XX	AH							
0	16/03/2021	Show access tracks and EWA	SL	XX	XX	XX	AH							
Rev	Date	Revision Description	On	Plan	Eng	OS	App							



Scale @ A3: 1:1,600 Coordinate System: GDA 1994 MGA Zone 56

0 15 30 60 90 120 Metres



Confidential: For Internal Use Only

3	22/04/2021	Remove survey corridor	JL	XX	XX	XX	AH		
2	15/04/2021	Clip survey corridor, EWA, LPH, tracks to RIDA properties	JL	XX	XX	XX	AH		
1	17/03/2021	Add LPH	SL	XX	XX	XX	AH		
0	16/03/2021	Show access tracks and EWA	SL	XX	XX	XX	AH		
Rev	Date	Revision Description	Crp	Eng	Eng	Eng	AS	AS	AS

Based on or contains data provided by the State of Queensland. In consideration of the State permitting use of this data you acknowledge and agree that the State gives no warranty in relation to the data (including accuracy, reliability, completeness, currency or suitability) and accepts no liability (including without limitation, liability in negligence) for any loss, damage or costs (including consequential damage) relating to any use of the data. Data must not be used for direct marketing or be used in breach of the privacy laws

© Commonwealth of Australia (Geoscience Australia) year of publication. This material is released under the Creative Commons Attribution 3.0 Australia Licence. <http://creativecommons.org/licenses/by/3.0/au/>. The dimensions, areas, number of lots, size & location of corridor information are approximate only and may vary.

Disclaimer: While all reasonable care has been taken to ensure the information contained on this map is up to date and accurate, no warranty is given that the information contained on this map is free from error or omission. Any reliance placed on such information shall be at the sole risk of the user. Please verify the accuracy of all information prior to using it.

Note: The information shown on this map is a copyright of Arrow Energy Limited and, where applicable, its affiliates and co-venturers.

Source:
Arrow Energy Limited, Geosciences Australia
Qld Gov.

Status: IFU
Issued To: A Hall
Author: jluke

DK West - LPH

Map 5 of 5

Uncontrolled 3