

Santos Ltd
ABN 80 007 550 923
60 Flinders Street
Adelaide, South Australia 5000
Telephone: 61 8 8116 5000
Facsimile: 61 8 8116 5050
www.santos.com



10 March 2020

Phil Joyce
Executive Director – Development Assessment
Department of State Development, Manufacturing, Infrastructure and Planning
Level 13, 1 William Street
BRISBANE QLD 4001

Dear Phil,

Response to Information Requirement Notice for RPI20/002 Santos – Wippo South 2

I refer to the assessment application RPI20/002, seeking to authorise operation of the Wippo South 2 gas flowline (Petroleum Pipeline Licence (PPL) 2054) located within the Channel Country SEA, and your request for further information dated 9 March 2020. A response to the matters raised in the requirement notice are addressed in this document and attachments as outlined in Table 1 (see over page).

Please contact Jodie Spencer on (07) 3838 3182 or via jodie.spencer@gmail.com should you require any further information.

Yours sincerely,

A handwritten signature in blue ink, appearing to read "Liz Dunlop".

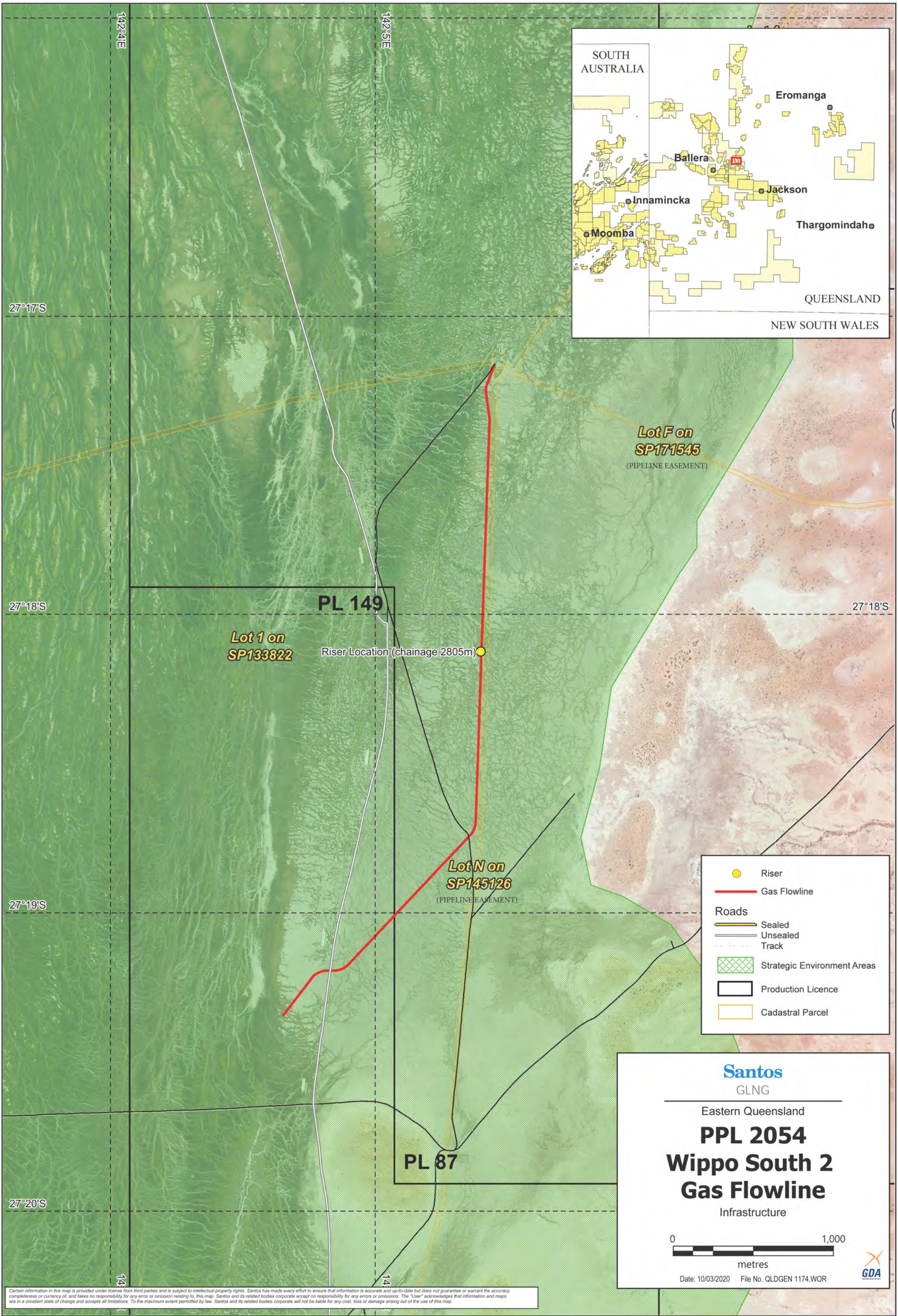
Liz Dunlop
Principal Environmental Advisor

Table 1: Supplementary Information for RPI19-011

Request	Santos Response
<p>Item 1 –</p> <p>The Assessment Application Form and the Regional Interests Development Application Assessment Report (Assessment Report) state that the resource activities are located on Lot 1 SP133822.</p> <p>Figures 1 - 4 of the Assessment Report include Lot 1 SP133822 as well as Lot F SP171545 and Lot N SP145126.</p> <p>Confirm the lots on which the resource activities are to be located and amend figures and documents accordingly, as required.</p>	<p>The Wippo South 2 gas flowline is located on Lot 1 on Plan SP133822, as stated within the application form and supporting assessment report.</p> <p>Figures 1 – 4 of the assessment report shows Lot F on Plan SP171545 and Lot N on Plan SP145126 for location context purposes only, in the same manner that the existing roads are shown. The Wippo South 2 gas flowline is not located on these Lot on Plans. These Lot on Plans refer to neighbouring pipeline easements. Lot F on Plan SP171545 is the easement for the Wippo East 1 gas flowline and Lot N on Plan SP145126 is the easement for the Tartulla Gas Trunkline.</p> <p>Figures 1 – 4 have been updated with a note to clearly state that these Lot on Plans are pipeline easements. The updated figures are provided in Attachment 1 – Attachment 4.</p>
<p>Item 2 –</p> <p>Figure 1 of the Assessment Report shows the location of the resource activities but does not demonstrate their location in the Channel Country SEA. It is hence difficult to determine the areas of the Channel Country SEA impacted by the resource activities.</p> <p>Amend Figure 1 to include the SEA.</p>	<p>The Wippo South 2 gas flowline is located entirely within the Channel Country SEA. Figure 1 has been updated to clearly illustrate this and is provided in Attachment 1.</p>

ATTACHMENT 1 –

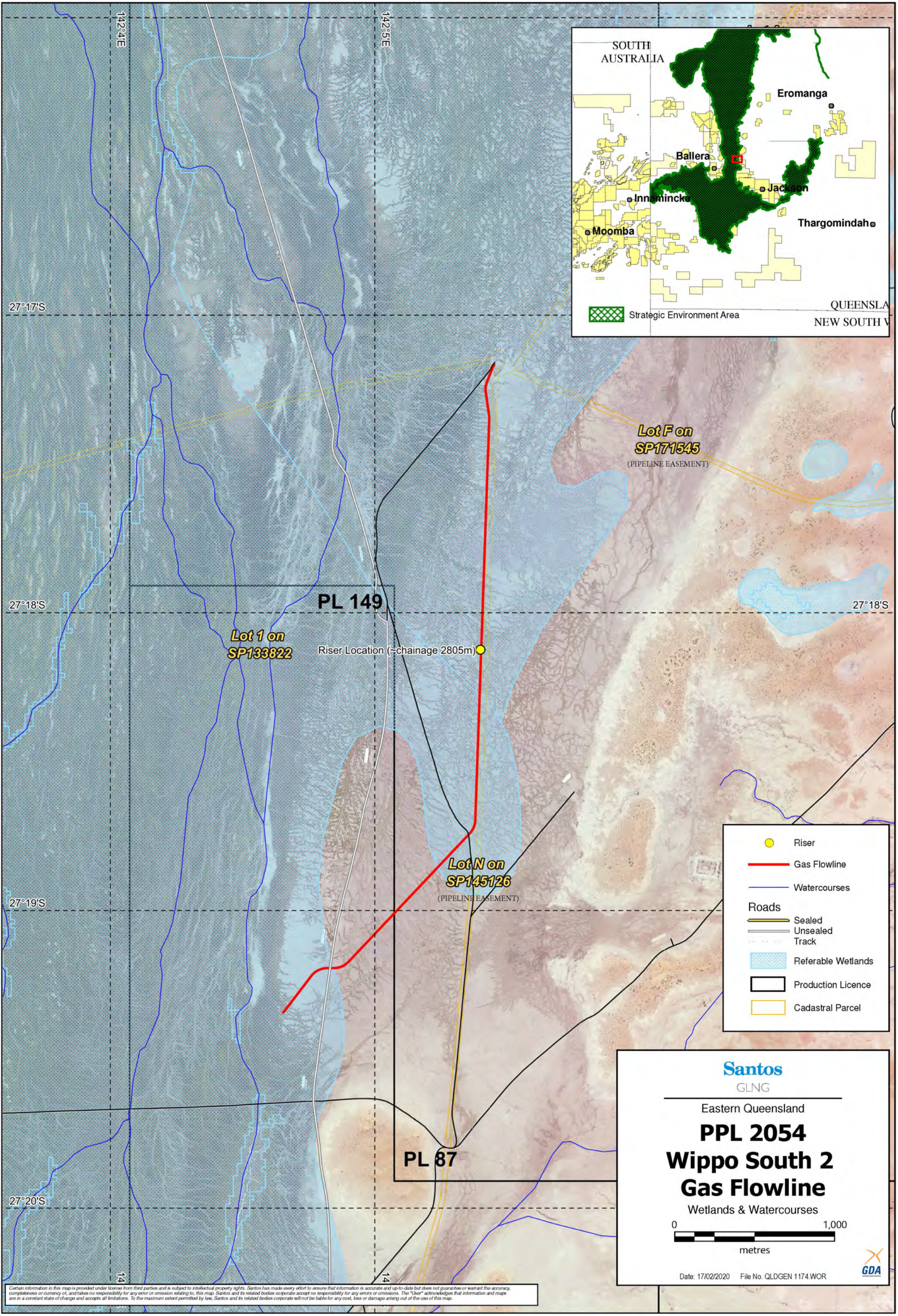
Figure 1: Location of the Wippo South 2 Gas Flowline (PPL 2054)



Certain information in this map is provided under license from third parties and is subject to intellectual property rights. Santos has made every effort to ensure that information is accurate and up-to-date but does not guarantee or warrant the accuracy, completeness or currency of, and takes no responsibility for any error or omission relating to, this map. Santos and its related bodies corporate accept no responsibility for any error or omission. The "User" acknowledges that information and maps are in a constant state of change and accepts all limitations. To the maximum extent permitted by law, Santos and its related bodies corporate will not be liable for any cost, loss or damage arising out of the use of this map.

ATTACHMENT 2 –

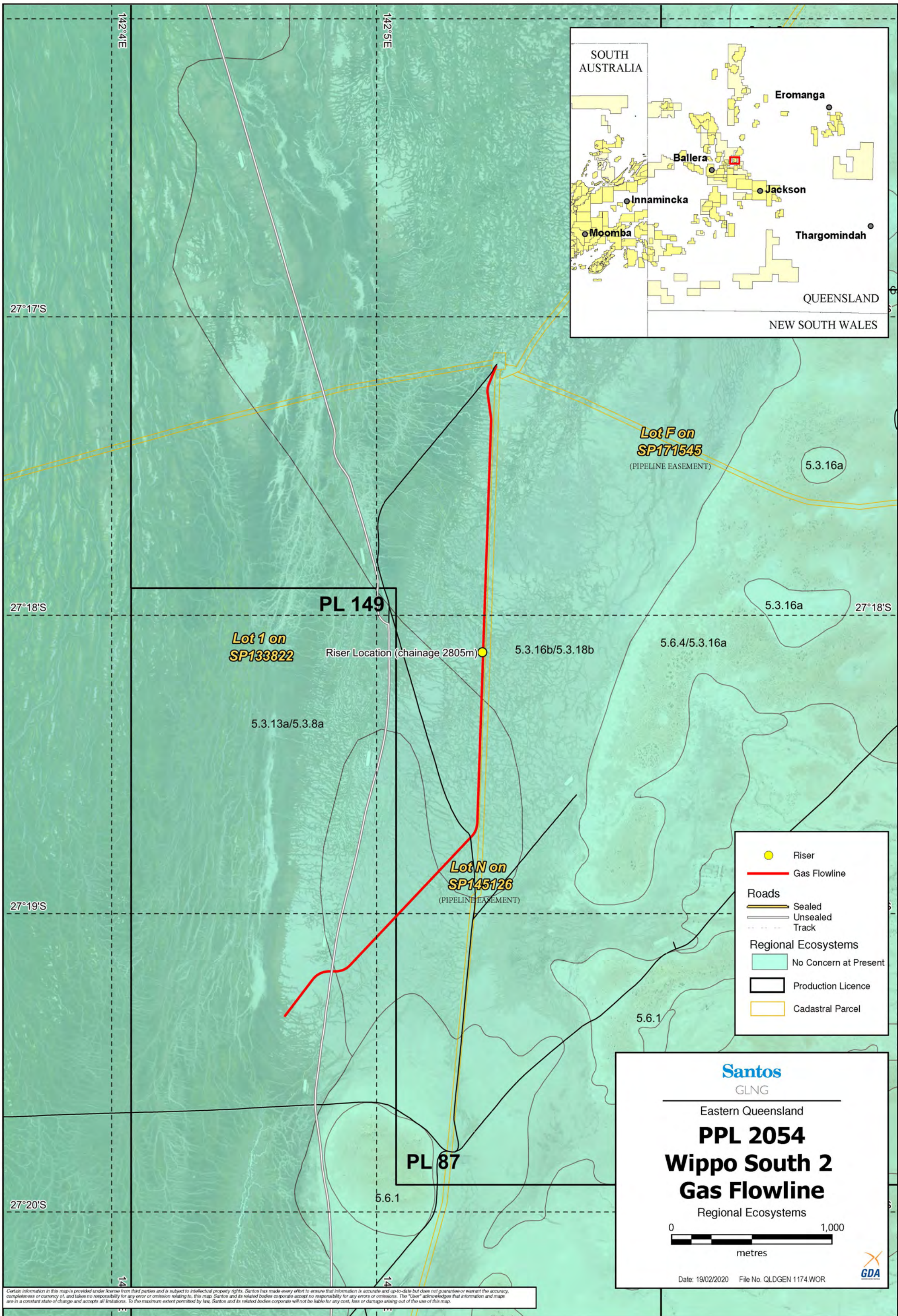
Figure 2: Watercourses, Wetlands and Strategic Environmental Areas



Certain information in this map is provided under license from third parties and is subject to intellectual property rights. Santos has made every effort to ensure that information is accurate and up-to-date but does not guarantee or warrant the accuracy, completeness or currency of, and takes no responsibility for any error or omission relating to, this map. Santos and its related bodies corporate accept no responsibility for any errors or omissions. The "User" acknowledges that information and maps are in a constant state of change and accepts all limitations. To the maximum extent permitted by law, Santos and its related bodies corporate will not be liable for any cost, loss or damage arising out of the use of this map.

ATTACHMENT 3 –

Figure 3: Regional Ecosystems



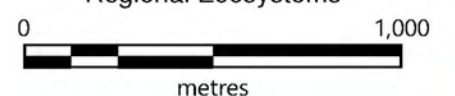
Certain information in this map is provided under license from third parties and is subject to intellectual property rights. Santos has made every effort to ensure that information is accurate and up-to-date but does not guarantee or warrant the accuracy, completeness or currency of, and takes no responsibility for any error or omission relating to, this map. Santos and its related bodies corporate accept no responsibility for any errors or omissions. The "User" acknowledges that information and maps are in a constant state of change and accepts all limitations. To the maximum extent permitted by law, Santos and its related bodies corporate will not be liable for any cost, loss or damage arising out of the use of this map.

Santos
GLNG

Eastern Queensland

PPL 2054
Wippo South 2
Gas Flowline

Regional Ecosystems

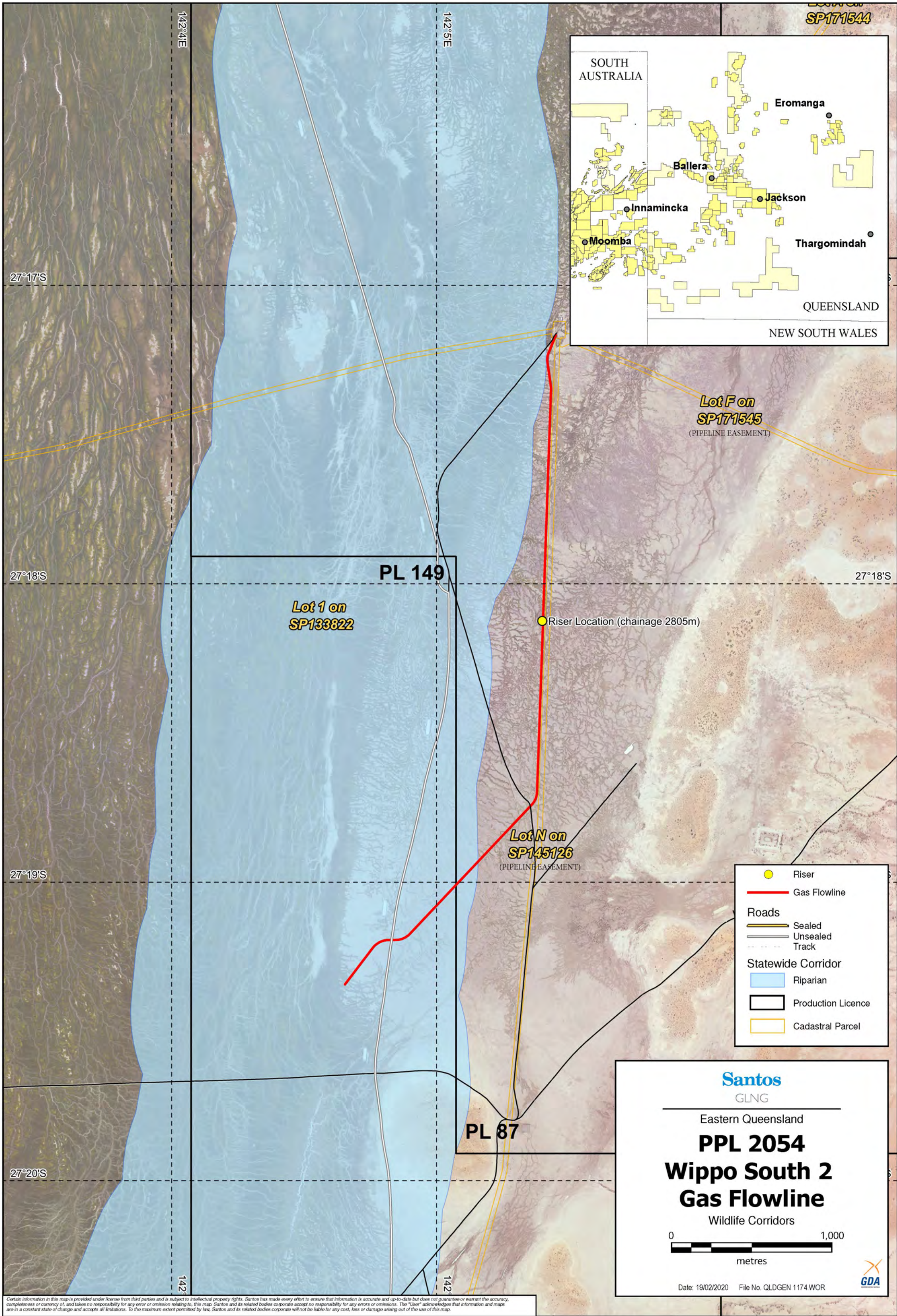


Date: 19/02/2020 File No. QLDGEN 1174.WOR



ATTACHMENT 4 –

Figure 4: State and Regional Biodiversity Corridors



Certain information in this map is provided under license from third parties and is subject to intellectual property rights. Santos has made every effort to ensure that information is accurate and up-to-date but does not guarantee or warrant the accuracy, completeness or currency of, and takes no responsibility for any error or omission relating to, this map. Santos and its related bodies corporate accept no responsibility for any errors or omissions. The "User" acknowledges that information and maps are in a constant state of change and accepts all limitations. To the maximum extent permitted by law, Santos and its related bodies corporate will not be liable for any cost, loss or damage arising out of the use of this map.