

# AMENDED REGIONAL INTERESTS DEVELOPMENT APPROVAL (RIDA) – ~~11 November 2019~~ 15 September 2020

## RPI19/004 – Anglo American – Mt Isa South

(Given under section 57 of the *Regional Planning Interests Act 2014*)

**Date: 15 September 2020**

### Description of the land

Real property description: ~~Lot 1 G12~~, Lot 1 GI4, Lot 1 MW7, Lot 3416 SP276149, Lot 3 SP263939, Lot 3 WI30, ~~Lot 3 WI25~~, Lot 4171 PH133, Lot 4 WI62, Lot 7 WI63, Lot 11 GI844080, Lot 12 WI18, Lot 47 SP255117, Lot 1 WI26, Lot 2 WI20, **Lot 3 WI39**

Local Government Area: Boulia Shire Council

### Approved resource activities

The approved resource activities are set out in Table 1 below.

Definitions of the approved resource activities are provided in Table 2 below.

This development approval authorises impacts on the Channel Country Strategic Environmental Area - designated precinct by the approved resource activities.

**Table 1: Approved resource activities – Mt Isa South**

Area of regional interest	Location	Resource activity	Area of disturbance (m <sup>2</sup> )
Channel Country Strategic Environmental Area (Designated precinct) (SEA)	<del>Lot 1 G12</del> , Lot 1 GI4, Lot 1 MW7, Lot 3416 SP276149, Lot 3 SP263939, Lot 3 WI30, <del>Lot 3 WI25</del> , Lot 4171 PH133, Lot 4 WI62, Lot 7 WI63, Lot 11 GI844080, Lot 12 WI18, Lot 47 SP255117, Lot 1 WI26, Lot 2 WI20, <b>Lot 3 WI39</b>	Magnetotelluric survey	40.8 <b>194.4</b>
		Passive Seismic Survey	1.3
		Controlled source electromagnetic survey	81
		<b>Gravity surveys</b>	<b>0</b>
		Exploration boreholes	
		Access tracks	3,300
		Drill pads	6,400
<b>Total</b>			<b>9,793.4</b> <b>9,976.7</b>

**Table 2: Definitions of approved resource activities**

<b>Resource activity</b>	<b>Definition</b>
Magnetotelluric survey	<ul style="list-style-type: none"> <li>• 216 auger holes in the SEA, <b>comprising:</b> <ul style="list-style-type: none"> <li>- <b>1 x vertical magnetic coil hole</b>, 250mm in diameter and 700mm deep (0.05m<sup>2</sup>/hole), using hand <b>mechanical</b> augers</li> <li>- <b>2 x horizontal magnetic coil holes 1.2m long, 250mm wide and 250mm deep, dug using hand tools</b></li> <li>- <b>5 x electrode holes, 250mm in diameter and 250mm deep dug using hand tools</b></li> </ul> </li> <li>• backfilling of the auger holes following the completion of the survey</li> <li>• disturbance area of 40.8m<sup>2</sup> <b>194.4m<sup>2</sup></b> in the SEA.</li> </ul>
Passive seismic survey	<ul style="list-style-type: none"> <li>• 26 auger holes along the survey line in the SEA, 250mm in diameter and 400mm deep (0.05m<sup>2</sup>/hole), using hand augers</li> <li>• backfilling of the auger holes following the completion of the survey</li> <li>• 12.8km of the PS line in the SEA on a previously established State seismic line</li> <li>• disturbance area of 1.3m<sup>2</sup> in the SEA.</li> </ul>
Controlled source electromagnetic survey	<ul style="list-style-type: none"> <li>• 12 transmitter pits in each of the three survey areas in the SEA, approx. 1.5m x 1.5m and up to 500mm deep (2.25m<sup>2</sup>/pit)</li> <li>• 100 receiver stations per survey area, with vertical coils installed to a depth of approx. 700mm</li> <li>• backfilling of the pits following the completion of the survey</li> <li>• disturbance area of 81m<sup>2</sup> in the SEA.</li> </ul>
Exploration boreholes	<ul style="list-style-type: none"> <li>• drilling of up to four exploration boreholes in the SEA, approx. 150mm in diameter and ranging from 700m to 1,500m deep</li> <li>• up to four 40m x 40m drill pads</li> <li>• access tracks, approx. 3m wide with a length of 1.1 kms in the SEA</li> <li>• drilling fluids contained in temporary sumps, stored in accordance with Australian Standards</li> <li>• disturbance area of 9,700m<sup>2</sup> in the SEA.</li> </ul>
<b>Gravity survey</b>	<ul style="list-style-type: none"> <li>• <b>2,180 sites in the SEA, each with no disturbance.</b></li> </ul>

## Regional interests conditions

A person who is the holder of, or is acting under, this RIDA must not contravene a condition of this approval.

Condition number	Condition	Timing for condition
1.	Carry out the approved resource activities and disturbance of land in the Channel Country Strategic Environmental Area - designated precinct generally in accordance with: <ul style="list-style-type: none"> <li>(a) the resource activities identified in Table 1: Approved resource activities</li> <li>(b) the resource activities defined in Table 2: Definitions of resource activities</li> <li>(c) the stamped approved plan, subject to pre-disturbance inspections:               <ul style="list-style-type: none"> <li>(i) <i>Figure 5 Exploration Activities within the Channel Country SEA</i> prepared by Hansen Bailey (<b>Attachment 1</b>).</li> </ul> </li> </ul>	At all times.
2.	Resource activities are not to be undertaken: <ul style="list-style-type: none"> <li>(a) during periods of high rainfall and/or during extensive flooding during the wet season (November – April)</li> <li>(b) in areas where:               <ul style="list-style-type: none"> <li>(i) surface water is present or</li> <li>(ii) water is flowing.</li> </ul> </li> </ul>	As indicated.
3.	The resource activities must avoid sensitive features such as drainage lines, surface water areas, riparian vegetation, mature trees and Aboriginal cultural heritage sites as far as possible.	At all times.
4.	Only access tracks are permitted in a wetland of other environmental value or in a watercourse. <p><i>Note: Wetland of other environmental value means a wetland that meets the definition of a wetland and that is shown as a wetland of 'general environmental significance' or wetland of 'other environmental value' on the Map of referable wetlands.</i></p>	At all times.
5.	Access tracks in a wetland of other environmental value or watercourse must not: <ul style="list-style-type: none"> <li>(a) result in ongoing negative impacts to water quality or</li> <li>(b) result in bank instability.</li> </ul> <p><i>Note: Wetland of other environmental value means a wetland that meets the definition of a wetland and that is shown as a wetland of 'general environmental significance' or wetland of 'other environmental value' on the Map of referable wetlands.</i></p>	At all times.
6.	New access tracks must: <ul style="list-style-type: none"> <li>(a) maximise co-location</li> </ul>	At all times.

	<ul style="list-style-type: none"> <li>(b) be minimised in width to the greatest practicable extent</li> <li>(c) be no wider than 3m.</li> </ul>	
7.	The resource activities must not have a direct or indirect impact on a Groundwater Dependent Ecosystem.	At all times.
8.	Implement measures to minimise the diversion of overland flow during any construction, maintenance or operation of the resource activities.	At all times.
9.	<p>Develop and implement erosion and sediment controls which:</p> <ul style="list-style-type: none"> <li>(a) allows stormwater to pass through or around the site in a controlled manner and at non-erosive flow velocities</li> <li>(b) minimise soil erosion resulting from wind, rain and flowing water</li> <li>(c) minimise the duration that disturbed soils are exposed to the erosive forces of wind, rain and flowing water</li> <li>(d) minimise work-related soil erosion and sediment runoff</li> <li>(e) minimise negative impacts to land adjacent to the resource activity.</li> </ul>	At all times.
10.	<p>Contaminants from the resource activity must not be directly or indirectly released to a watercourse, wetland, drainage feature or to the banks of a watercourse, wetland, drainage feature or to groundwater.</p> <p><i>Note: Contaminants mean waste contaminants as defined in Schedule 9 of the Environmental Protection Regulation 2008.</i></p>	At all times.
11.	Store all fuels and oils in accordance with relevant Australian Standards.	At all times.
13.	<p>Progressively restore disturbance areas to pre-disturbance condition as soon as practical and no later than six months after completion of the resource activities, including:</p> <ul style="list-style-type: none"> <li>(a) backfilling of all auger holes and transmitter pits</li> <li>(b) cement grouting of drill holes for the full depth and capping of bore holes approximately 1 m below ground surface</li> <li>(c) removal of drilling muds and fluids from the temporary sumps and disposal off site</li> <li>(d) backfilling of cleaned out temporary sumps with stockpiled soil</li> <li>(e) removal of all material and refuse from the drill pad area and disposal off site</li> <li>(f) respreading stripped topsoil on the decommissioned drill pads.</li> </ul>	As indicated.

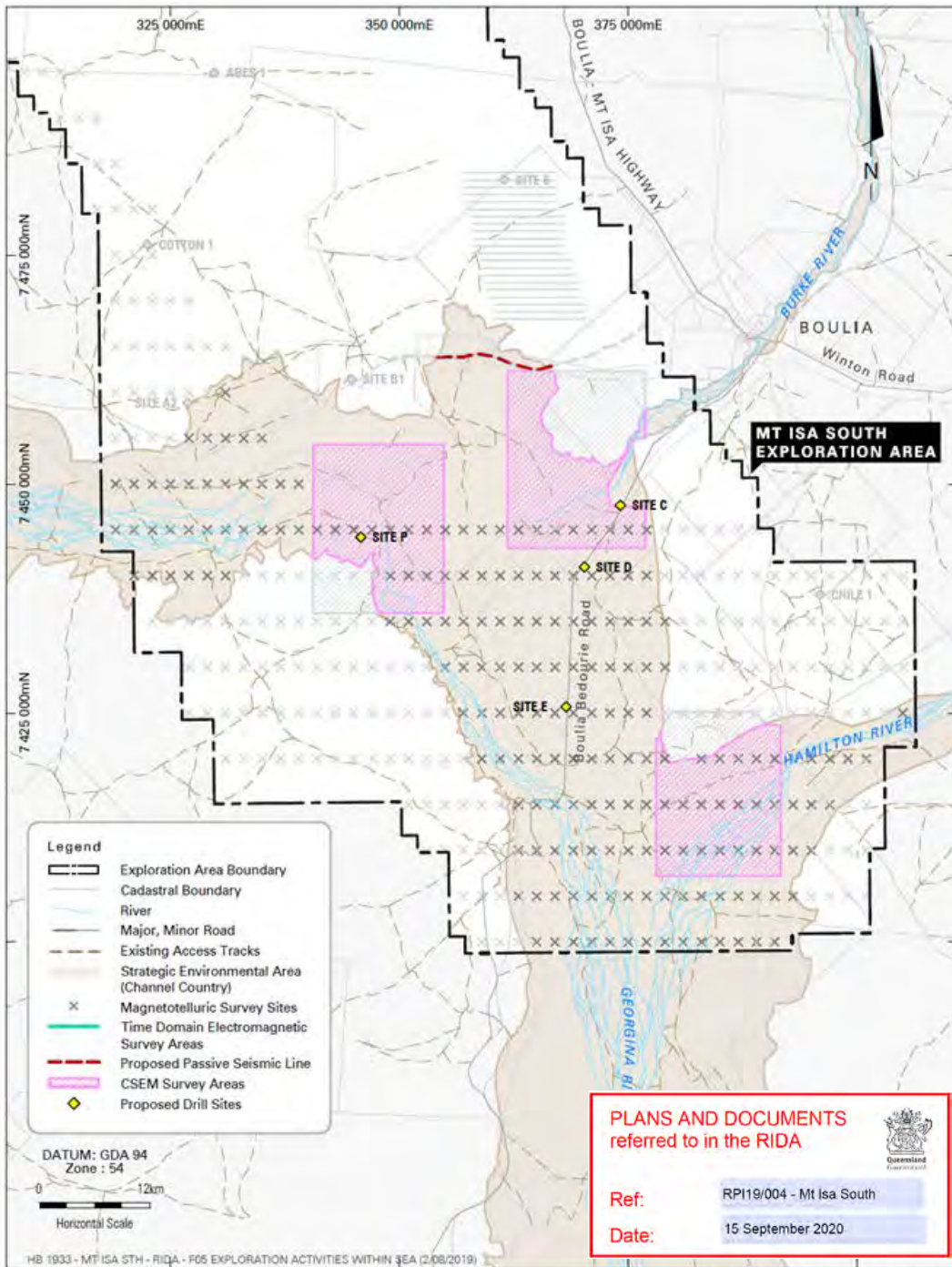
<p>14.</p>	<p>Provide records of the pre-disturbance, post-reinstatement and post-restoration condition of disturbance areas to the chief executive (<a href="mailto:RPIAct@dsmip.qld.gov.au">RPIAct@dsmip.qld.gov.au</a>, application reference number RPI19/004), demonstrating that the impacted land within the Channel Country Strategic Environmental Area – designated precinct has been returned to its pre-disturbance condition. Such records must include:</p> <ul style="list-style-type: none"> <li>(a) photographs of the pre-disturbance site conditions</li> <li>(b) photographs of the post-reinstatement site conditions</li> <li>(c) photographs of the post-restoration site conditions</li> <li>(d) evidence with the records (date and GPS stamped) required by parts (a) to (c) of this condition.</li> </ul> <p><i>Note:</i>  <i>Disturbance - means any impact to the landscape, vegetation, air quality, hydrology, habitat, or water quality that has been directly or indirectly caused by human activity associated with the resource activity.</i>  <i>'pre-disturbance' – the condition of the land before any resource activities occurred.</i>  <i>'post-reinstatement' – being the return of the soil to its previous profile, topography and drainage.</i>  <i>'post-restoration' – this is the point at which the ground cover has been established and ponding, erosion, subsidence, etc has been dealt with (being a longer process than the reinstatement phase).</i></p>	<p>Within three months of completing all post-restoration works.</p>
<p>15.</p>	<ul style="list-style-type: none"> <li>(a) All complaints received, and resulting actions taken, about the impact of the approved resource activities on the environmental attributes in the Channel Country Strategic Environmental Area – designated precinct must be recorded. The record must include: <ul style="list-style-type: none"> <li>(i) name, address and contact number of the complainant</li> <li>(ii) time and date of complaint</li> <li>(iii) reasons for the complaint</li> <li>(iv) investigations undertaken</li> <li>(v) conclusions formed</li> <li>(vi) actions taken to resolve the complaint</li> <li>(vii) any abatement measures implemented</li> <li>(viii) person responsible for resolving the complaint.</li> </ul> </li> <li>(b) The records of any complaints received and recorded in accordance with this condition must be provided to the chief executive at <a href="mailto:RPIAct@dsmip.qld.gov.au">RPIAct@dsmip.qld.gov.au</a></li> </ul> <p><i>Note: The record of complaint provided to the chief executive must state the application reference number, being</i></p>	<ul style="list-style-type: none"> <li>(a) At all times.</li> <li>(b) Within <del>three</del> <b>60</b> business days of receipt of a complaint.</li> </ul>

	<i>RPI19/004.</i>	
16.	A full copy of the regional interests development approval must be kept on-site and available to any person(s) contracted to undertake the approved resource activities.	At all times

### General Advice

It is the applicant's responsibility to ensure all relevant approvals and licenses are obtained from the applicable Local, State, and/or Federal Authorities prior to works commencing on site.

# Attachment 1 - Approved plan



**PLANS AND DOCUMENTS referred to in the RIDA**

Ref: RPI19/004 - Mt Isa South

Date: 15 September 2020



**MT ISA SOUTH PROJECT**  
 Exploration Activities within the Channel Country SEA



**FIGURE 5**

