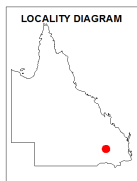

Appendix B External Mapping



The ALUMC has a three-level hierarchical structure. QLUMP map the land use consistently to the secondary level of ALUMC—as presented in this map. Some land uses that fall under our minimal mapping unit of 2 hectares are not explicitly mapped but aggregated into the surrounding land use classes.

Further information relating to land use mapping can be found at <http://www.qld.gov.au/environment/land/vegetation/mapping/qlump/> and www.abares.gov.au/landuse/

While every care is taken to ensure the accuracy of this information, the Department of Science, Information Technology and Innovation makes no representations or warranties about its accuracy, reliability, completeness or suitability for any particular purpose and disclaims all responsibility and all liability (including without limitation, liability in negligence) for all expenses, losses, damages (including indirect or consequential damage) and costs which might be incurred as a result of the information being inaccurate or incomplete in any way and for any reason.

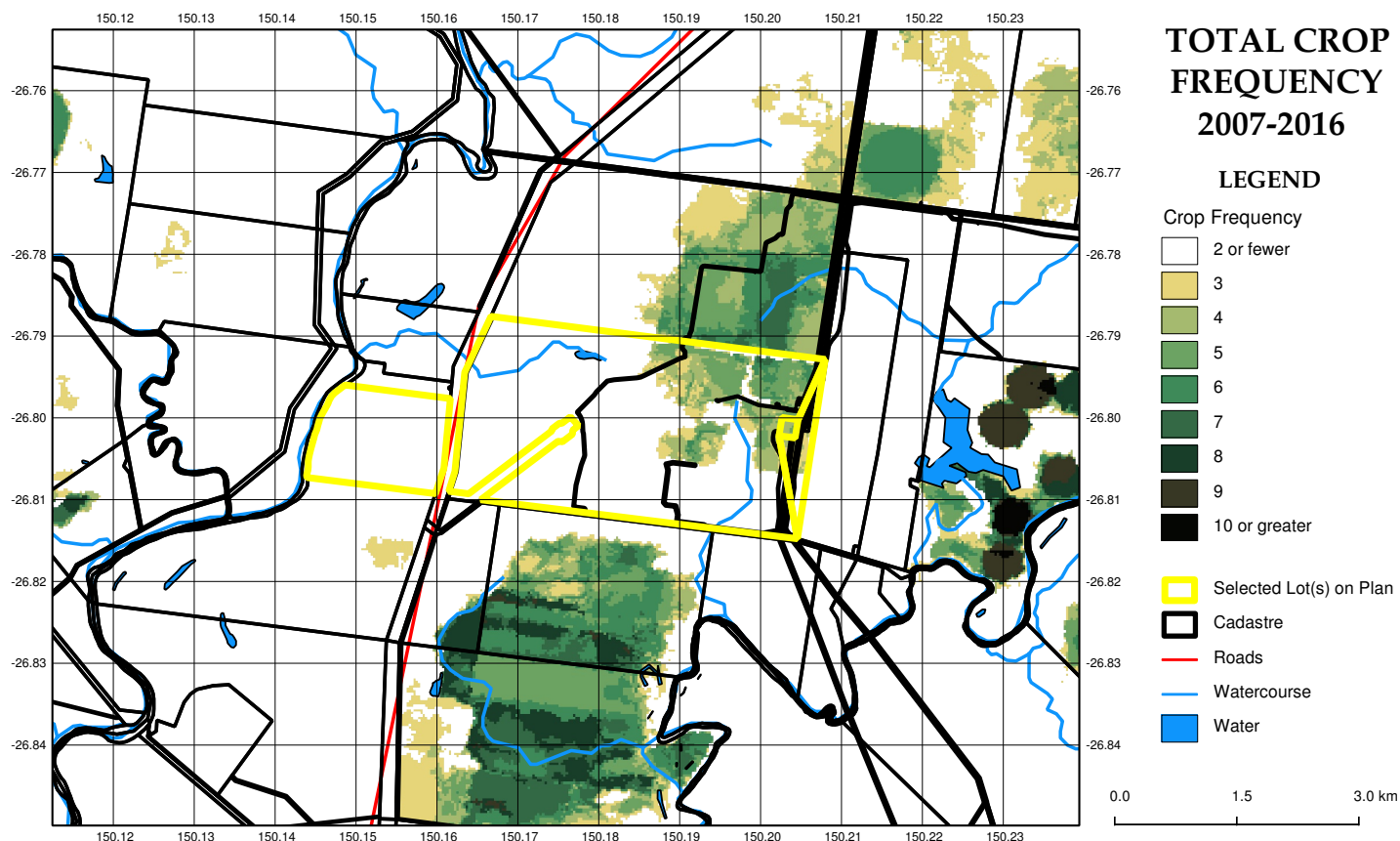


Ontario Government

Introduction

This report presents crop frequency information for your chosen area, for the time period selected. The report is for a minimum ten year period between 1988 and 2013. The report includes crop frequency mapping which is based on time series analysis of Landsat satellite imagery over the summer and winter growing seasons. The approach is based on detection of annual cycles of greenness, therefore some perennial crops may not be represented. Snapshots of composite Landsat imagery for February and September for each year are also provided. For further information, refer to the FORAGE User Guide (http://www.longpaddock.qld.gov.au/forage/forage_user_guide.pdf).

Annual crop frequency map for 2007 - 2016



How to interpret the information

Crop frequency mapping: Coloured areas on the map indicate locations where active crops have been detected three or more times in the summer and winter growing seasons, for a minimum ten year period. The map on this page shows 'Total Frequency' and is a count of number of years in which an active crop was detected. The two maps on the following page show the summer and winter crop frequency. These maps show a count of the number of times an active crop was detected in each of those growing seasons. The detection of active crops is based on time-series analysis of Landsat satellite imagery. Due to limitations of the automated method used to detect active cropping, you should also view the Landsat satellite imagery snapshots to confirm the presence or absence of cropping.

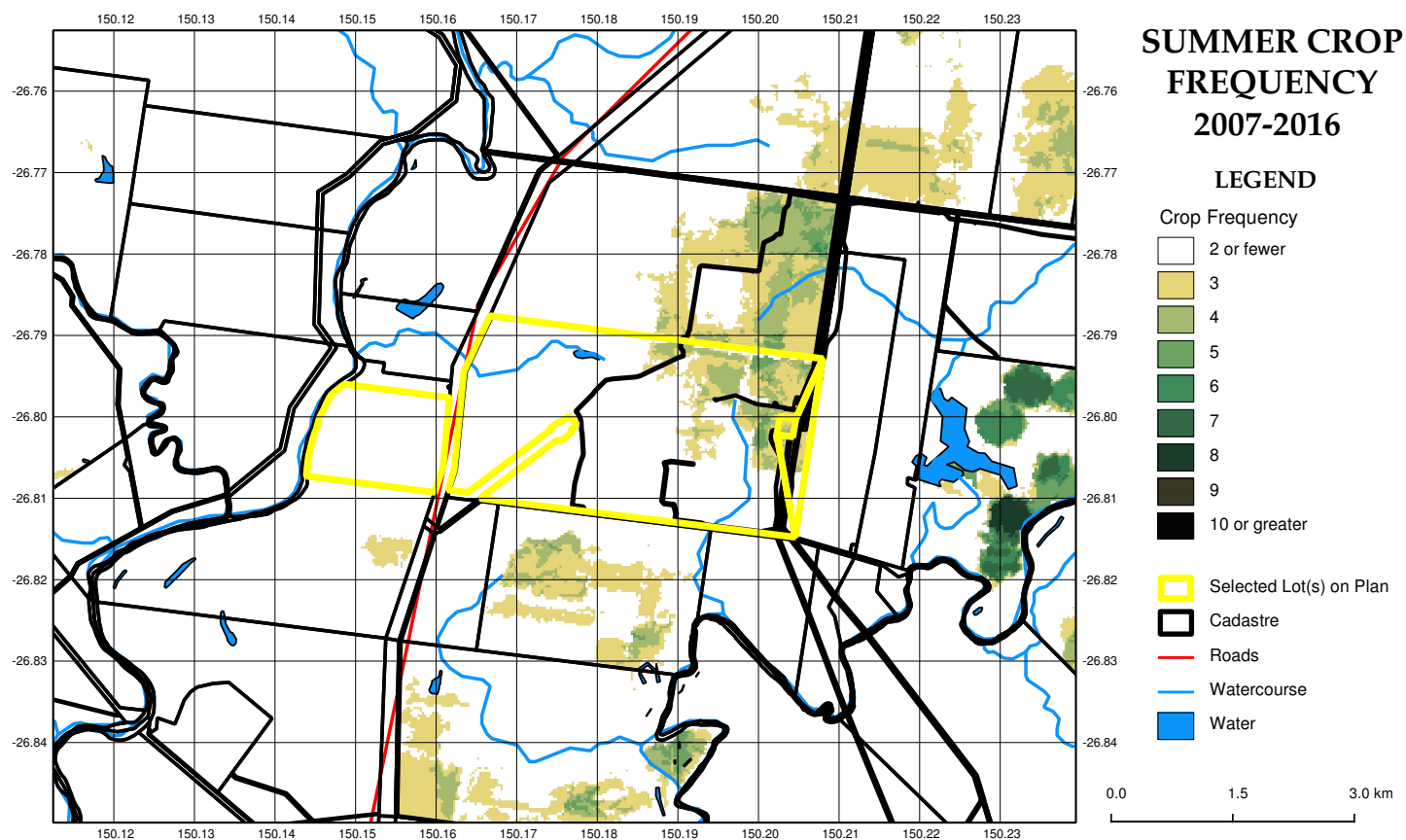
Landsat satellite imagery: The summer (February) and winter (September) Landsat imagery snapshots on the following pages help confirm the presence of an active crop. Each snapshot is designed to optimise the identification of winter and summer cropping and is generated from a number of images acquired within the growing season. The cropped areas will generally appear bright green in the imagery compared with the surrounding landscape. Even if the crop frequency mapping does not indicate cropping in an area, it is important to check each Landsat image to confirm that cropping has not been undertaken. Sometimes it will not be possible to clearly identify cropped areas in the imagery. For example, in some wetter seasons, much of the imagery can appear very green and cropping may be difficult to identify. Where this is the case, it is recommended to undertake further investigation using other information sources.

Disclaimer

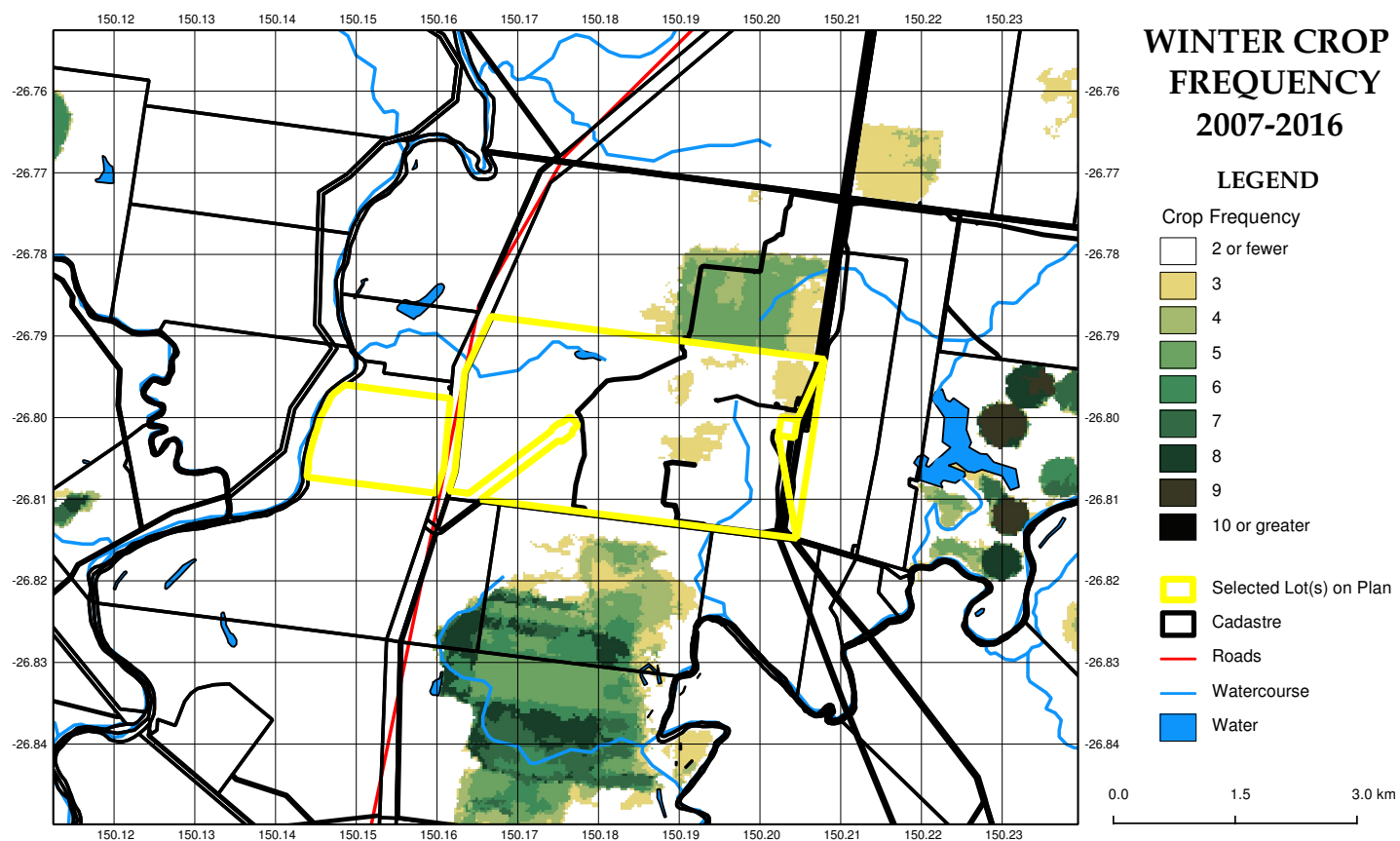
Limitation of liability: the State of Queensland, as represented by the Department of Science, Information Technology and Innovation (DSITI) gives no warranty in relation to the data (including without limitation, accuracy, reliability, completeness or fitness for a particular purpose). To the maximum extent permitted by applicable law, in no event shall DSITI be liable for any special, incidental, indirect, or consequential damages whatsoever (including, but not limited to, damages for loss of profits or confidential or other information, for business interruption, for personal injury, for loss of privacy, for failure to meet any duty including of good faith or of reasonable care, for negligence, and for any other pecuniary or other loss whatsoever including, without limitation, legal costs on a solicitor own client basis) arising out of, or in any way related to, the use of or inability to use the data.

©The State of Queensland, 2017.

Summer (February) crop frequency map for 2007 - 2016



Winter (September) crop frequency map for 2007 - 2016



FORAGE REPORT: CROP FREQUENCY

<http://www.longpaddock.qld.gov.au/forage>

February 13, 2017

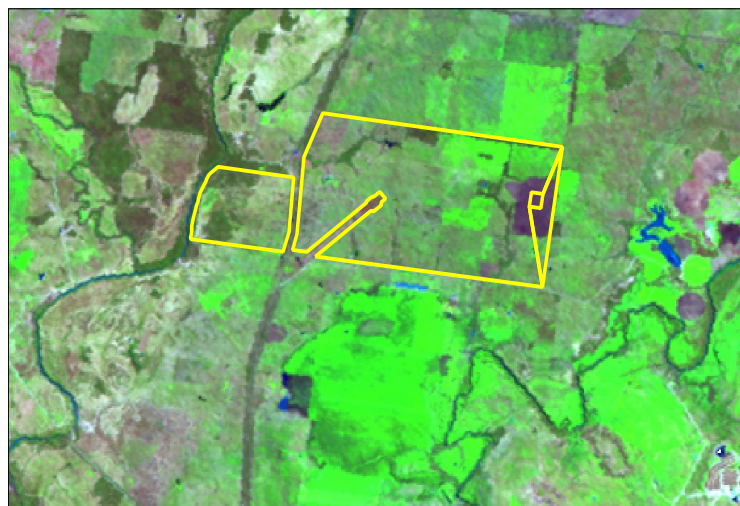
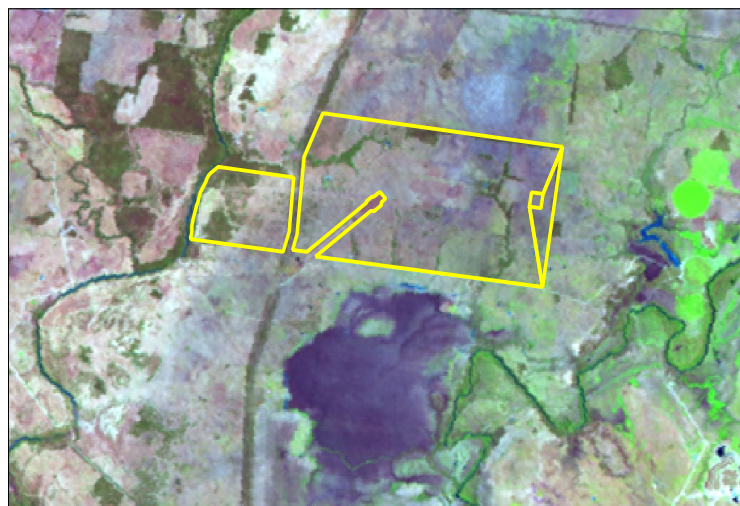
Lot on Plan: 2SP244055

Label: noLabel

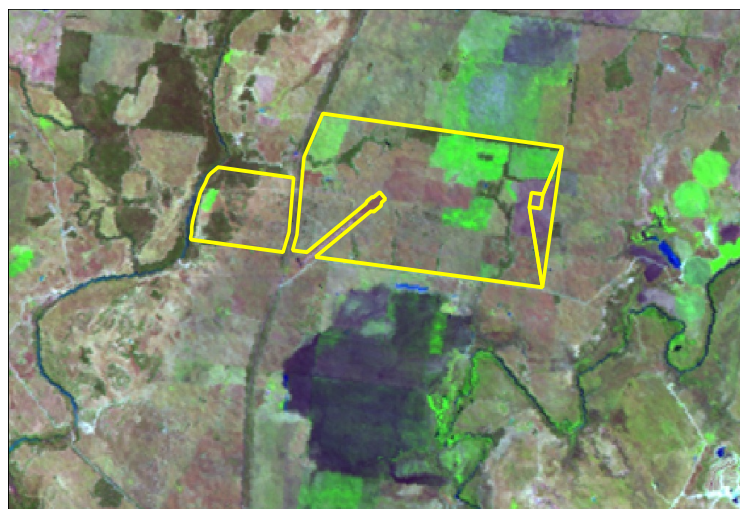
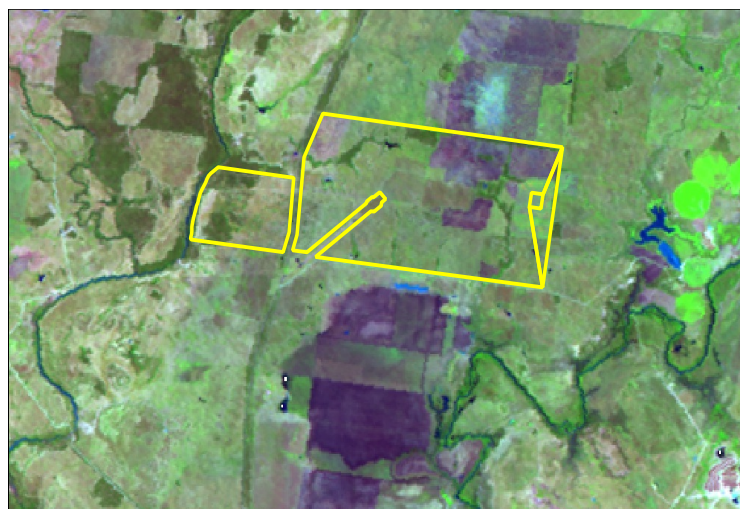


Queensland
Government

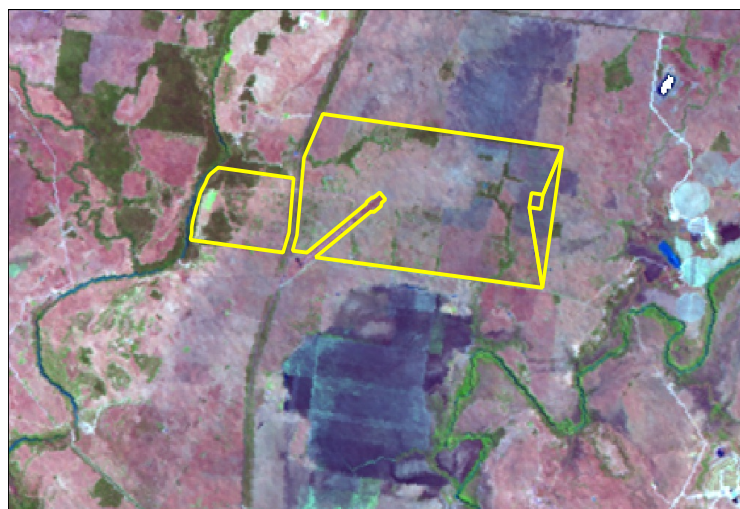
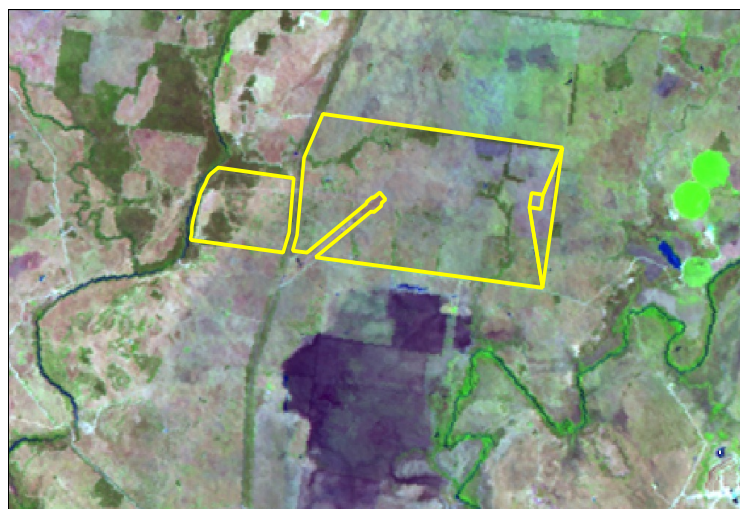
February (left) and September (right) images for 2007



February (left) and September (right) images for 2008



February (left) and September (right) images for 2009



FORAGE REPORT: CROP FREQUENCY

<http://www.longpaddock.qld.gov.au/forage>

February 13, 2017

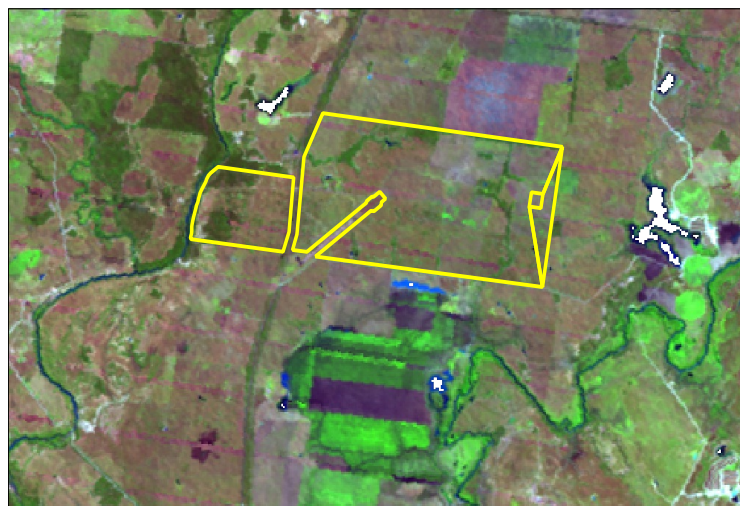
Lot on Plan: 2SP244055

Label: noLabel

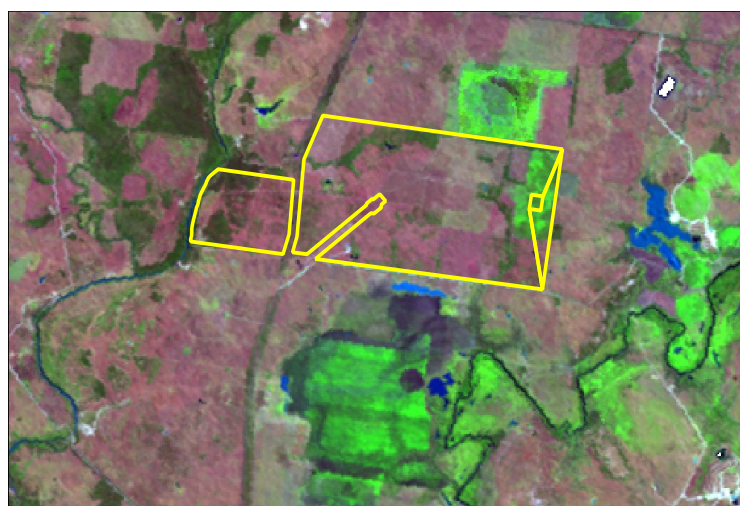


Queensland
Government

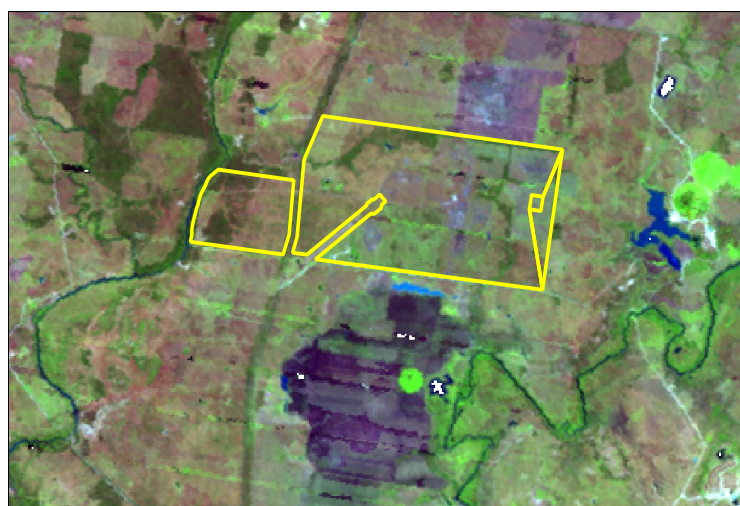
February (left) and September (right) images for 2010



February (left) and September (right) images for 2011



February (left) and September (right) images for 2012



FORAGE REPORT: CROP FREQUENCY

<http://www.longpaddock.qld.gov.au/forage>

February 13, 2017

Lot on Plan: 2SP244055

Label: noLabel



Queensland
Government

February (left) and September (right) images for 2013



February (left) and September (right) images for 2014



February (left) and September (right) images for 2015



FORAGE REPORT: CROP FREQUENCY

<http://www.longpaddock.qld.gov.au/forage>

February 13, 2017

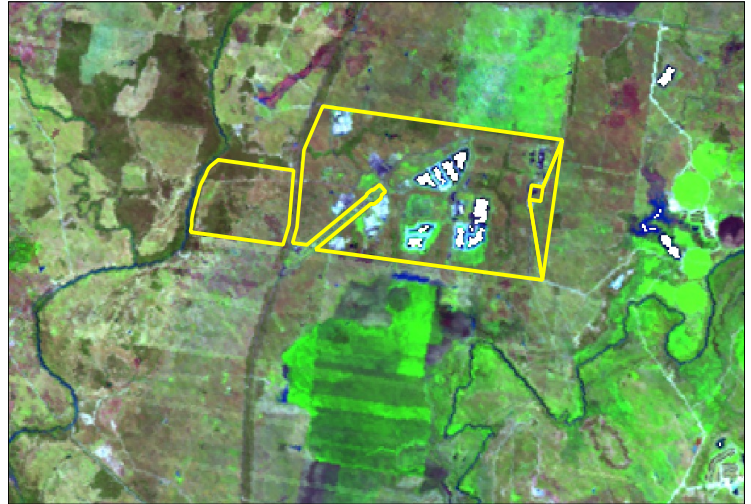
Lot on Plan: 2SP244055

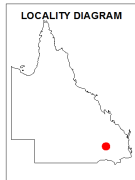
Label: noLabel



Queensland
Government

February (left) and September (right) images for 2016





Queensland Land Use Mapping Program

ALUM v7 Secondary level

- | | | | |
|---|----------------------------------|---|--------------------------------|
|  | Lot and Plan |  | Irrigated land in transition |
|  | Nature conservation |  | Intensive horticulture |
|  | Managed resource protection |  | Intensive animal husbandry |
|  | Other minimal use |  | Manufacturing and industrial |
|  | Grazing native vegetation |  | Residential |
|  | Production forestry |  | Services |
|  | Plantation forestry |  | Utilities |
|  | Grazing modified pastures |  | Transport and communication |
|  | Cropping |  | Mining |
|  | Perennial horticulture |  | Waste treatment and disposal |
|  | Seasonal horticulture |  | Lake |
|  | Land in transition |  | Reservoir/dam |
|  | Irrigated plantation forestry |  | River |
|  | Irrigated modified pastures |  | Channel/aqueduct |
|  | Irrigated cropping |  | Marsh/wetland |
|  | Irrigated perennial horticulture |  | Estuary/coastal waters |
|  | Irrigated seasonal horticulture |  | Freeways / motorways; Highways |
| | |  | Secondary roads; Streets |

The land use data set is a product of the Queensland Land Use Mapping Program (QLUMP). This data has a nominal scale of 1:50,000 in coastal regions and 1:100,000 in western Queensland. Land use is classified according to the Australian Land Use and Management Classification (ALUMC) Version 7. This map presents the most current land use information available in Queensland at the secondary level of the ALUMC, including the land use mapping products from 1999, 2006, 2009, 2011, 2012 and 2013.

The ALUMC has a three-level hierarchical structure. QLUMP map the land use consistently to the secondary level of ALUMC—as presented in this map. Some land uses that fall under our minimal mapping unit of 2 hectares are not explicitly mapped but aggregated into the surrounding land use classes.

Further information relating to land use mapping can be found at <http://www.qld.gov.au/environment/land/vegetation/mapping/qlump/> and www.abares.gov.au/landuse/

While every care is taken to ensure the accuracy of this information, the Department of Science, Information Technology and Innovation makes no representations or warranties about its accuracy, reliability, completeness or suitability for any particular purpose and disclaims all responsibility and all liability (including without limitation, liability in negligence) for all expenses, losses, damages (including indirect or consequential damage) and costs which might be incurred as a result of the information being inaccurate or incomplete in any way and for any reason.

© The State of Queensland, 2016