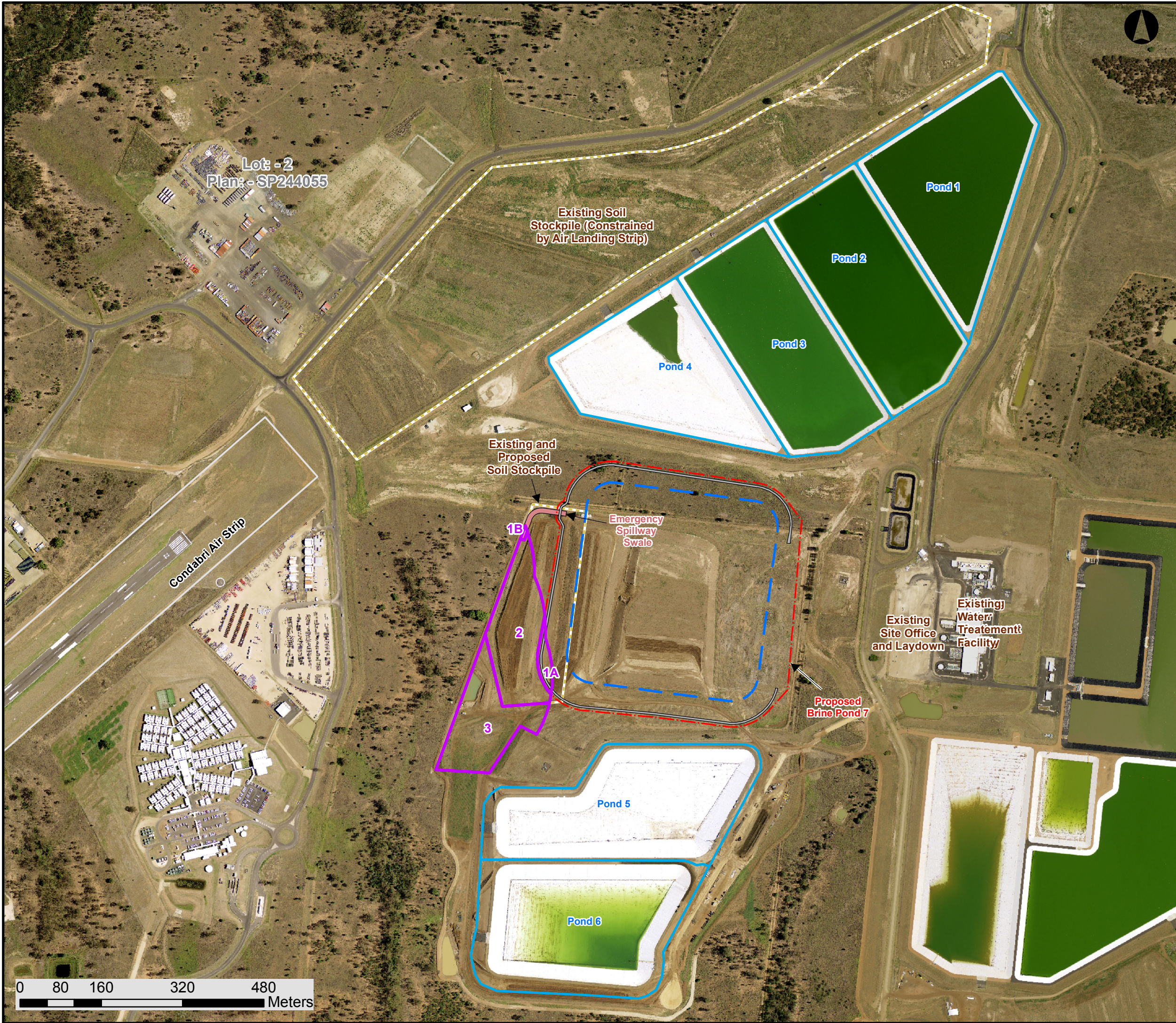

Appendix A Figures



Lot: -2
Plan: - SP244055

Existing Soil
Stockpile (Constrained
by Air Landing Strip)

Pond 1

Pond 2

Pond 3

Pond 4

Existing and
Proposed
Soil Stockpile

Emergency
Spillway
Swale

Proposed
Brine Pond 7

Existing
Site Office
and Laydown

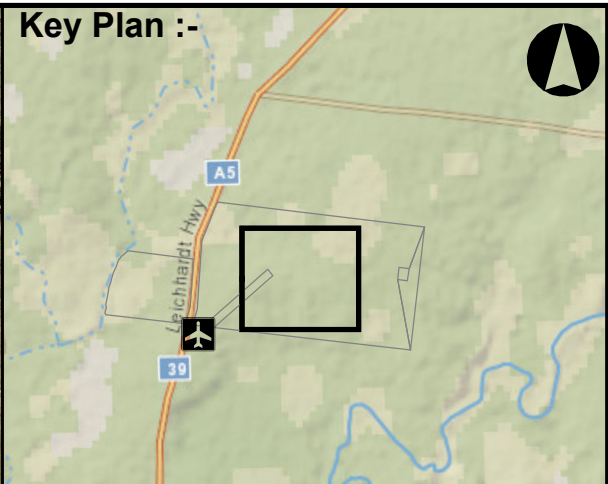
Existing
Water
Treatment
Facility

Pond 5

Pond 6

Condabri Air Strip

0 80 160 320 480
Meters



Key Plan :-

Legend :-




Proposed Disturbance within PPZ
(Brine Pond 7 and Stockpile Area
for Ponds 5,6 and 7 and temporary
construction works area)

Proposed Brine Pond 7 Layers

- Fence
- Top Embankment
- Road Perimeter

Other Layers

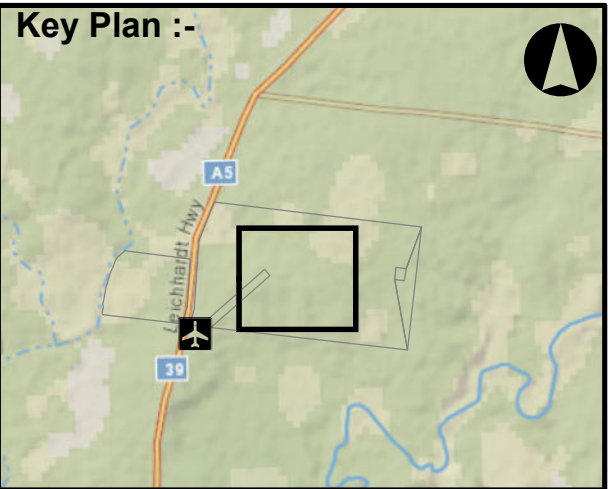
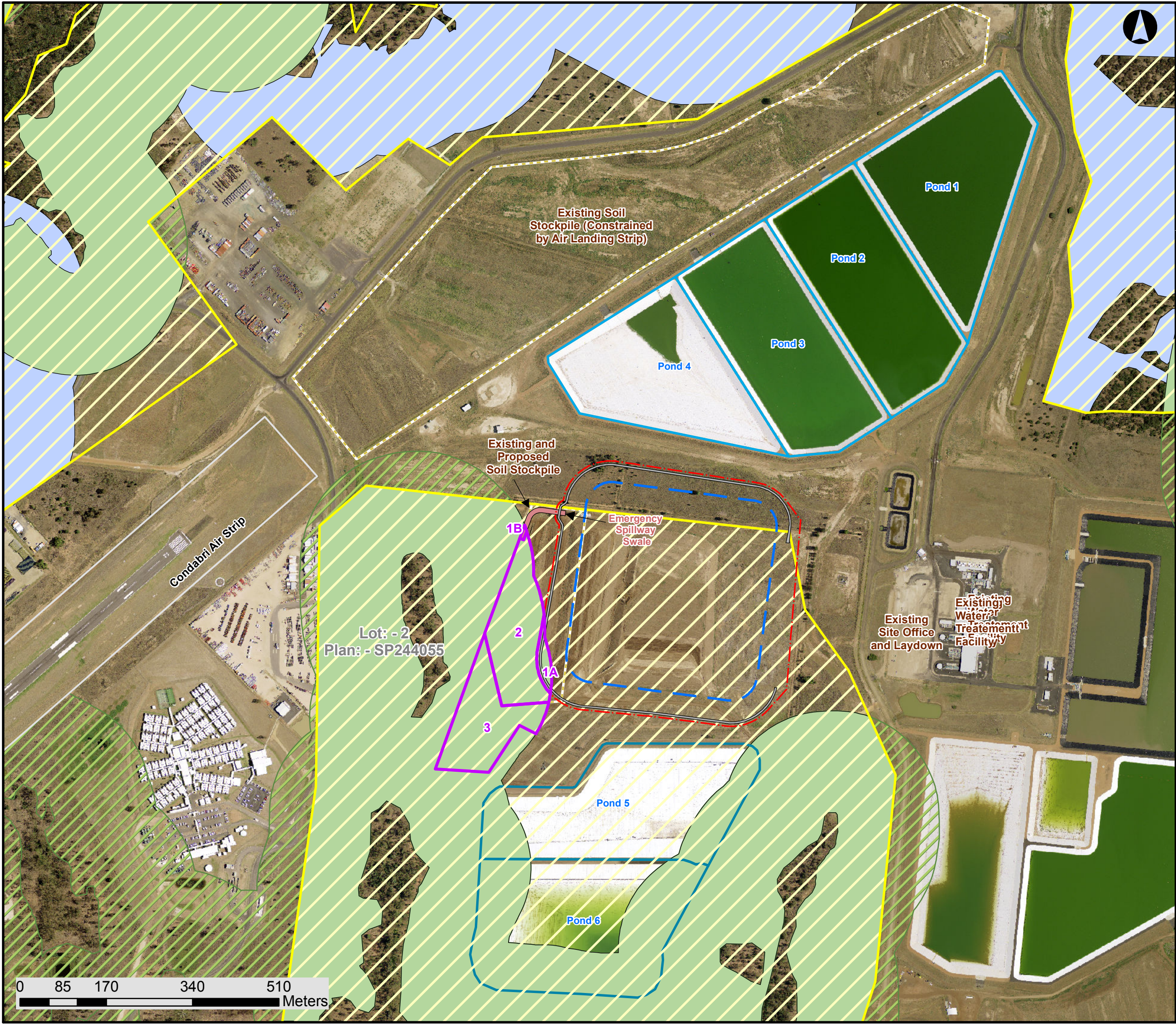
- Existing Brine Ponds
- Existing Stockpile Area
- Spillway Swale Area
- Cadastral Boundaries



**CONDABRI BRINE POND 7 AND STOCKPILE AREA
(ASSOCIATED WITH PONDS 5,6,7) REGIONAL
INTERESTS DEVELOPMENT APPLICATION**

**PROPOSED BRINE POND 7 AND
SOIL STOCKPILE LOCATION**

Date: Jan 2017	Scale: 1:7,000	Fig. No. Map. 1
-------------------	-------------------	--------------------



Legend :-

Proposed Disturbance within PPZ (Brine Pond 7 and Stockpile Area for Ponds 5,6 and 7 and temporary construction works area)

Proposed Brine Pond 7 Layers




- Fence
- Top Embankment
- Road Perimeter

Other Layers

- Existing Brine Ponds
- Existing Stockpile Area
- Spillway Swale Area
- Cadastral Boundaries
- Strategic Cropping Land

Impact to Strategic Cropping Land

- Category C
- Category B
- Category C Primary Protection Zone

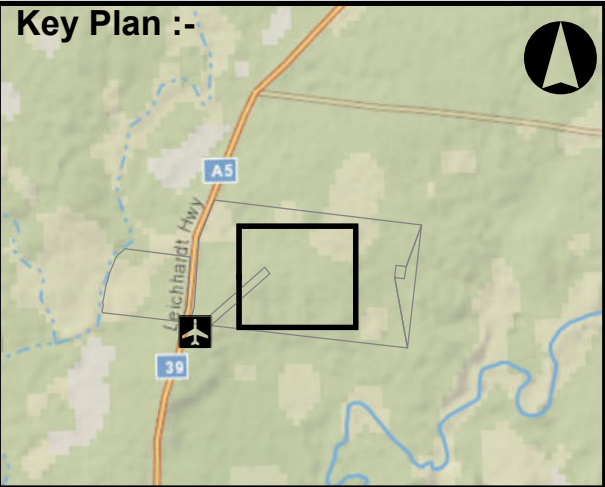
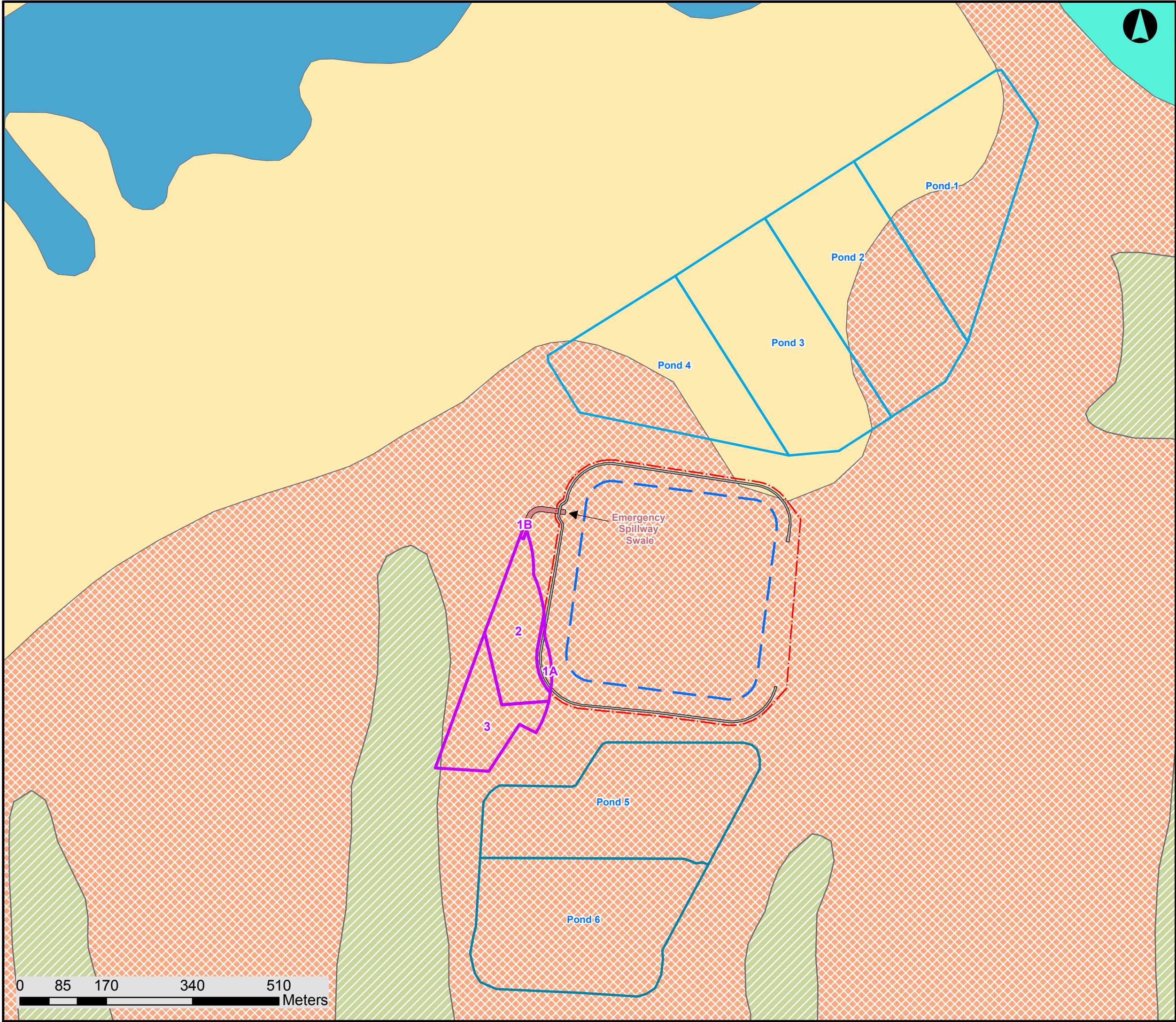


CONDABRI BRINE POND 7 AND STOCKPILE AREA (ASSOCIATED WITH PONDS 5,6,7) REGIONAL INTERESTS DEVELOPMENT APPLICATION

PROPOSED BRINE POND 7 AND STOCKPILE LOCATION IN RELATION TO ESA BUFFERS AND SCA

Date: Jan 2017	Scale: 1:7,000	Fig. No. Map. 2
-------------------	-------------------	--------------------

Service Layer Credits: Content may not reflect National Geographic's current map policy. Sources: National Geographic, Esri, DeLorme, HERE, UNEP-WCMC, USGS, NASA, ESA, METI, NRCAN, GEBCO, NOAA, increment P Corp.



Legend :-

Proposed Disturbance within PPZ
(Brine Pond 7 and Stockpile Area
for Ponds 5,6 and 7 and temporary
construction works area)

Proposed Brine Pond 7 Layers




- Fence
- Top Embankment
- Road Perimeter
- Spillway Swale Area

Other Layers

- Existing Brine Ponds

**Soil terrain Classification
(derived by Worley Parsons 2011)**

- 1.2, B
- 2.1.1, D
- 2.1.2, E
- 2.2.1, F
- 2.2.2, F

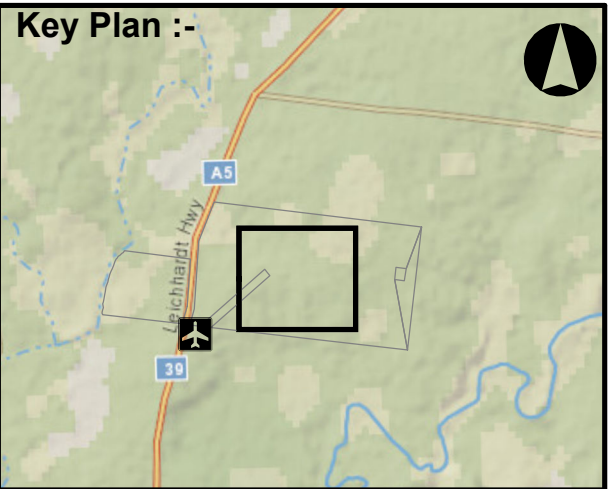
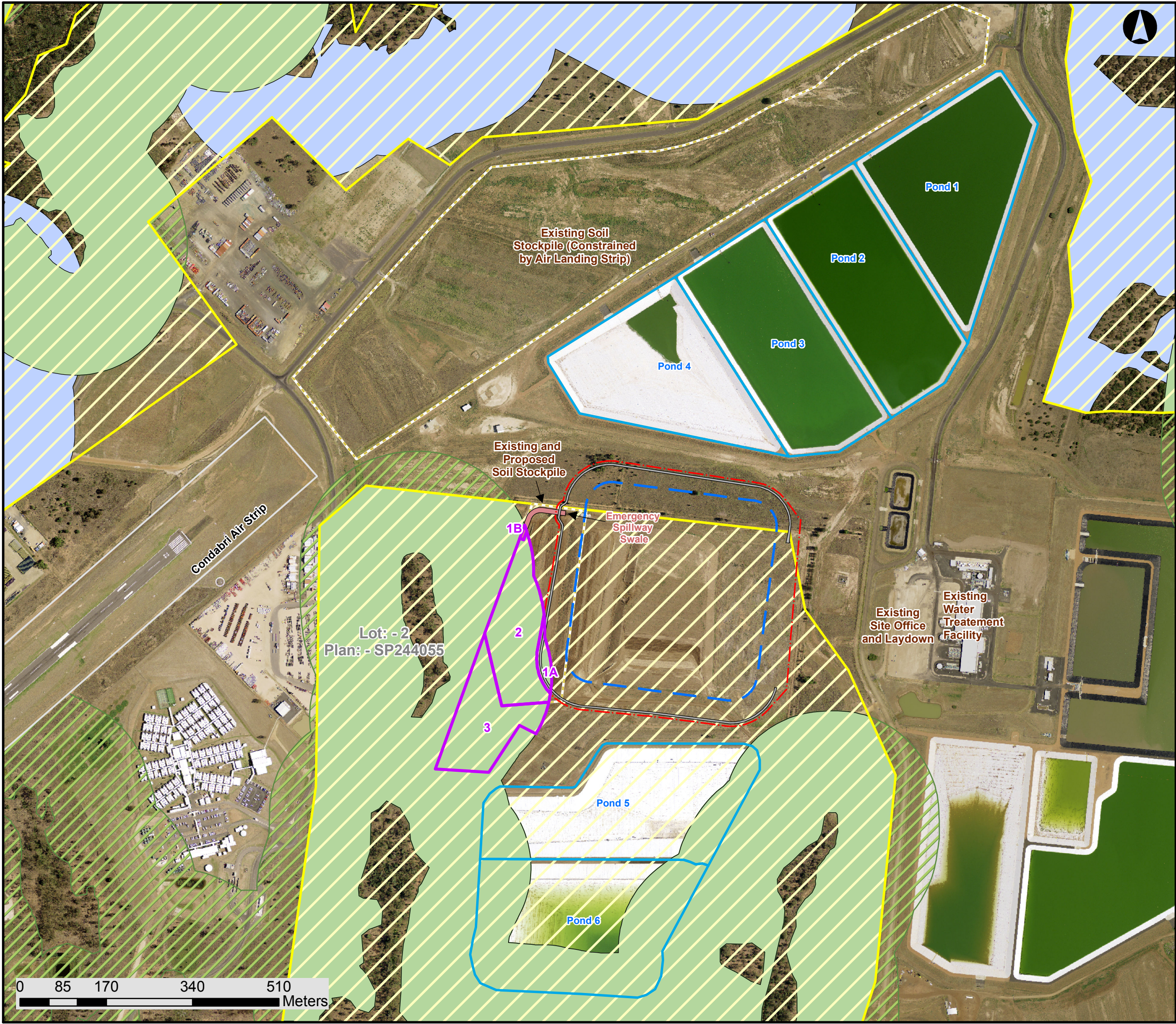


**CONDABRI BRINE POND 7 AND STOCKPILE AREA
(ASSOCIATED WITH PONDS 5,6,7) REGIONAL
INTERESTS DEVELOPMENT APPLICATION**

SOIL MAPPING OVERLAY




Date: Jan 2017	Scale: 1:7,000	Fig. No. Map. 3
--------------------------	--------------------------	---------------------------

Service Layer Credits: Content may not reflect National Geographic's current map policy. Sources: National Geographic, Esri, DeLorme, HERE, UNEP-WCMC, USGS, NASA, ESA, METI, NRCAN, GEBCO, NOAA, increment P Corp.



Legend :-

- Maximum potential impact to SCA
- Proposed Brine Pond 7 Layers**
 - Fence
 - Top Embankment
 - Road Perimeter
 - Spillway Swale Area
- Other Layers**
 - Existing Brine Ponds
 - Existing Stockpile Area
 - Strategic Cropping Land
- Impact to Strategic Cropping Land**
 - Category C
 - Category B
 - Category C Primary Protection Zone
 - DCDB Base Parcels



**CONDABRI BRINE POND 7 AND STOCKPILE AREA
(ASSOCIATED WITH PONDS 5,6,7) REGIONAL
INTERESTS DEVELOPMENT APPLICATION**

MAXIMUM POTENTIAL IMPACT TO SCA

Date: Jan 2017	Scale: 1:7,000	Fig. No. Map. 4
--------------------------	--------------------------	---------------------------