

REGIONAL INTERESTS DEVELOPMENT APPROVAL (RIDA) 28 September 2018

RPI18/018 – Mount Isa Mines Limited (ACN 009 661 447)

Russell Fault Project.

(Given under section 53 of the *Regional Planning Interests Act 2014*)

Description of the land

Real property description: Part Lot 1 on UN6 and Part Lot 1 on UN7
Local Government Area: Mount Isa Shire Council

Approved activities

The approved resource activities are set out in Table 1 below.

Definitions of the resource activities are included in Table 2 below.

The resource activities (preliminary activities – exploration) will be undertaken within Exploration Permit for Minerals (EPM) 26435, as broadly denoted on Figure 1 and Figure 2.

The resource activities are very low impact and will not result in disturbance.

This development approval authorises impacts on the Gulf Rivers Strategic Environmental Area (Gulf Rivers SEA) by the approved activities.

Table 1: Approved activities

Resource activities as follows:

Area of regional interest	Location	Resource activity	Area of disturbance (hectares)
Gulf Rivers Strategic Environmental Area	Part Lot 1 on UN6 and Part Lot 1 on UN7	Geological Reconnaissance and Mapping	0.00
		Soil Sampling	0.00
		Geophysics	0.00
		Temporary Mobile Campsites	0.00
Total area of disturbance is 0.00 ha.			

Table 2: Definitions

Resource activity	Definition
Geological Reconnaissance and Mapping	Work undertaken by a geologist (usually travelling on foot) involving the recording of outcropping rocks in the area using maps and a GPS. The activities also involve the assessment of areas of geological interest in the regional terrain for the appropriateness of future exploration. Rock samples (fist-sized) may also be collected from exposed outcrops for further assessment and analysis.
Soil sampling	Soil sampling conducted using hand tools (for example a pick or mattock) to dig to a depth of approximately 15cm, being where the rhizome or grass and shrub root base exists. The retrieved material is sieved and placed into paper or plastic sample bags. Sample sites are located using a GPS and grid system. XRF analysis is conducted using a field portable XRF unit. Workers either take readings in the field or collect samples (using the soil sampling technique described above) for analysis back at the exploration base. The use of hand held XRF instruments is restricted to persons trained and licensed by Queensland Health under the Radiation Safety Regulation 2010 and <i>Radiation Safety Act 1999</i> .
Geophysics	Electrical surveying conducted along grid lines of 1 – 5 kilometres in length. Electrical surveying requires digging of 30cm deep electrode pits by shovel or auger at 50 – 100m intervals. Ground-based gravity or magnetic surveying involves collecting measurements with a gravimeter or magnetometer along GPS located grid lines. The measurements are completed by workers on foot. Geophysical surveying involves traversing the area in a 4WD vehicle with support trailers.
Temporary Campsite	A short-term form of temporary accommodation for geologists and associated project staff. Temporary campsites include low-scale sleeping and eating facilities, toilet facilities (being portable self-contained toilets or pit toilets) and absorption trenches or transpiration beds for greywater. All general waste is collected and disposed of off-site at a licenced general waste facility. Temporary campsites are located a minimum of 100m from any riverine area. The wastewater disposal areas are located a minimum from any watercourse.

Regional interests conditions

A person who is the holder of, or is acting under, this RIDA must not contravene a condition of this approval.

Condition number	Condition	Timing for condition
1.	Carry out the approved activities generally in accordance with: <ol style="list-style-type: none"> a) The activities identified in Table 1: Approved activities. b) The activities defined in Table 2: Definitions of Activities. c) The approved plans: <ul style="list-style-type: none"> • <i>Figure 1: location of EPM 26435 within Gulf Rivers Strategic Environmental Area, undated, as provided by the applicant and lodged with the application on 1 June 2018 (refer Attachment 1); and</i> • <i>Figure 2: EPM 26435 in relation to Lot 1 UN6 and Lot 1 UN7, undated, as provided by the applicant and lodged with the application on 1 June 2018 (refer Attachment 2).</i> 	At all times.
2.	Activities which may contribute to erosion or obstruct overland or groundwater flow must not occur during the regional wet season (November to April).	As stated in condition.
3.	Human waste, greywater and other contaminants associated with temporary camp sites must be contained and disposed of, with sites rehabilitated to ensure no contaminants are directly or indirectly released into waters (including groundwater) in the Gulf Rivers Strategic Environmental Area.	At all times.
4.	Where relevant within the project works program, develop and implement erosion and sediment controls in accordance with the Best Practice Erosion and Sediment (BPESC) guidelines for Australia (International Erosion Control Association) which: <ol style="list-style-type: none"> a) allows stormwater to pass through or around the site in a controlled manner and at non-erosive flow velocities; b) minimises soil erosion resulting from wind, rain and flowing water; c) minimises the duration that disturbed soils are exposed to the erosive forces of wind, rain and flowing water; d) minimises work-related soil erosion and sediment runoff; and e) minimises negative impacts to land adjacent to the activities. 	At all times.

5.	Temporary camp sites and associated greywater disposal trenches must not directly or indirectly interfere with overland or groundwater flow.	At all times.
6.	Progressively reinstate disturbed areas (including electrode pits and temporary camp sites) to a pre-activity condition as soon as practical.	During construction and operation.
7.	Clearing of native vegetation is not permitted within or adjoining watercourses, lakes, wetlands or springs unless it is undertaken in accordance with the most current version of the 'Riverine Protection Permit exemption requirements' and any other requirements under other legislation.	At all times.

General Advice

It is the applicants' responsibility to ensure all relevant approvals and licenses are obtained from the applicable Local, State, and/or Federal Authorities prior to works commencing on site.

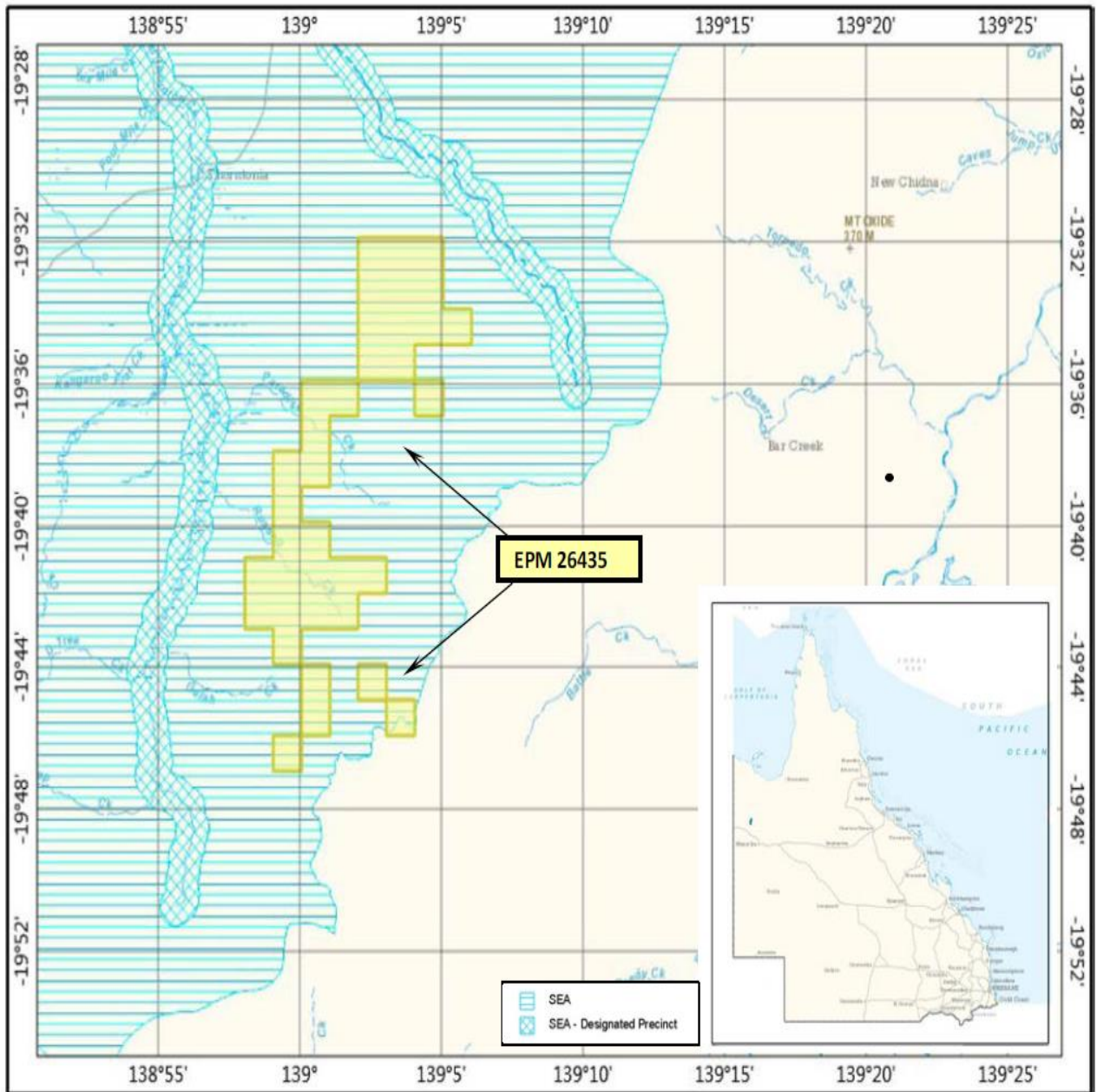


Figure 1: Location of EPM 26435 within Gulf Rivers Strategic Environmental Area

<p>PLANS AND DOCUMENTS referred to in the DEVELOPMENT APPROVAL</p>		 Queensland Government
SARA ref:	RPI18-018 Mt Isa Mines Limited	
Date:	28 September 2018	

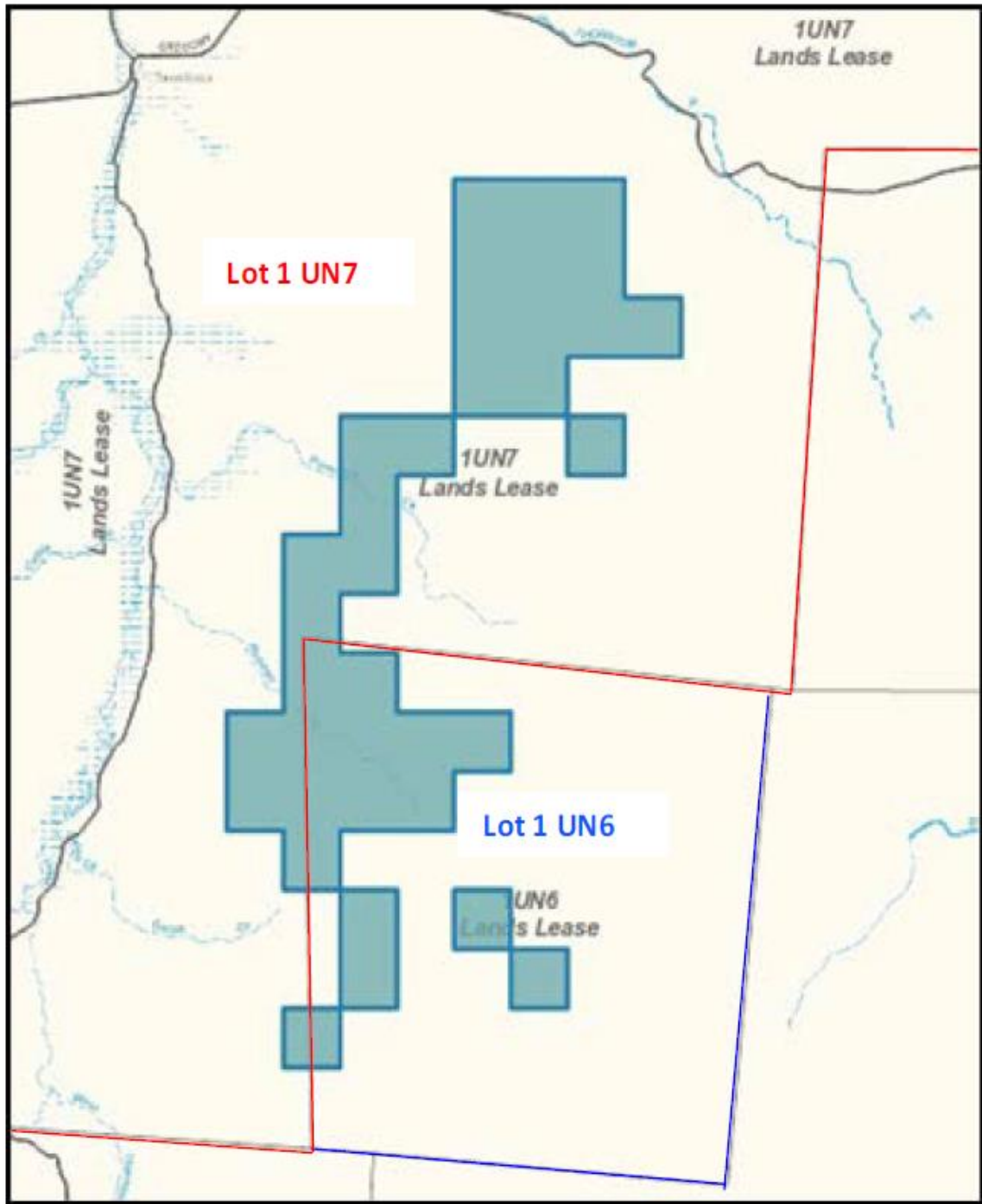


Figure 2: EPM 26435 in relation to Lot 1 UN6 and Lot 1 UN7

PLANS AND DOCUMENTS
referred to in the
DEVELOPMENT APPROVAL



SARA ref: RPI18-018 Mt Isa Mines Limited
.....
Date: 28 September 2018
.....