 <p><b>Figure 1</b> Sheet No. ADMG_ARD_LYN001_MAP_0052_A</p>	<p><b>Location of Proposed Exploration Activities within the Gulf Rivers SEA</b></p>	<div><div><div><div><div></div><div>EPM Boundary</div></div><div><div></div><div>Major Watercourse</div></div><div><div></div><div>Proposed Drill Pad (30m x 20m)</div></div><div><div></div><div>Proposed Track (3m width)</div></div></div></div></div>	<p>Areas of Regional Interest</p> <div><div><div></div><div>Strategic Environmental Area</div></div><div><div></div><div>Strategic Environmental Area - Designated Precinct</div></div></div>
	<p>Drawn By: Chris Schlebusch</p>		
	<p>Requested by: Richard Smith</p>		
	<p>Date: 30/04/2018</p>		<p>Data sources: Qld Department of Natural Resources and Mines, National Native Title Tribunal Geoscience Australia, Esri</p>



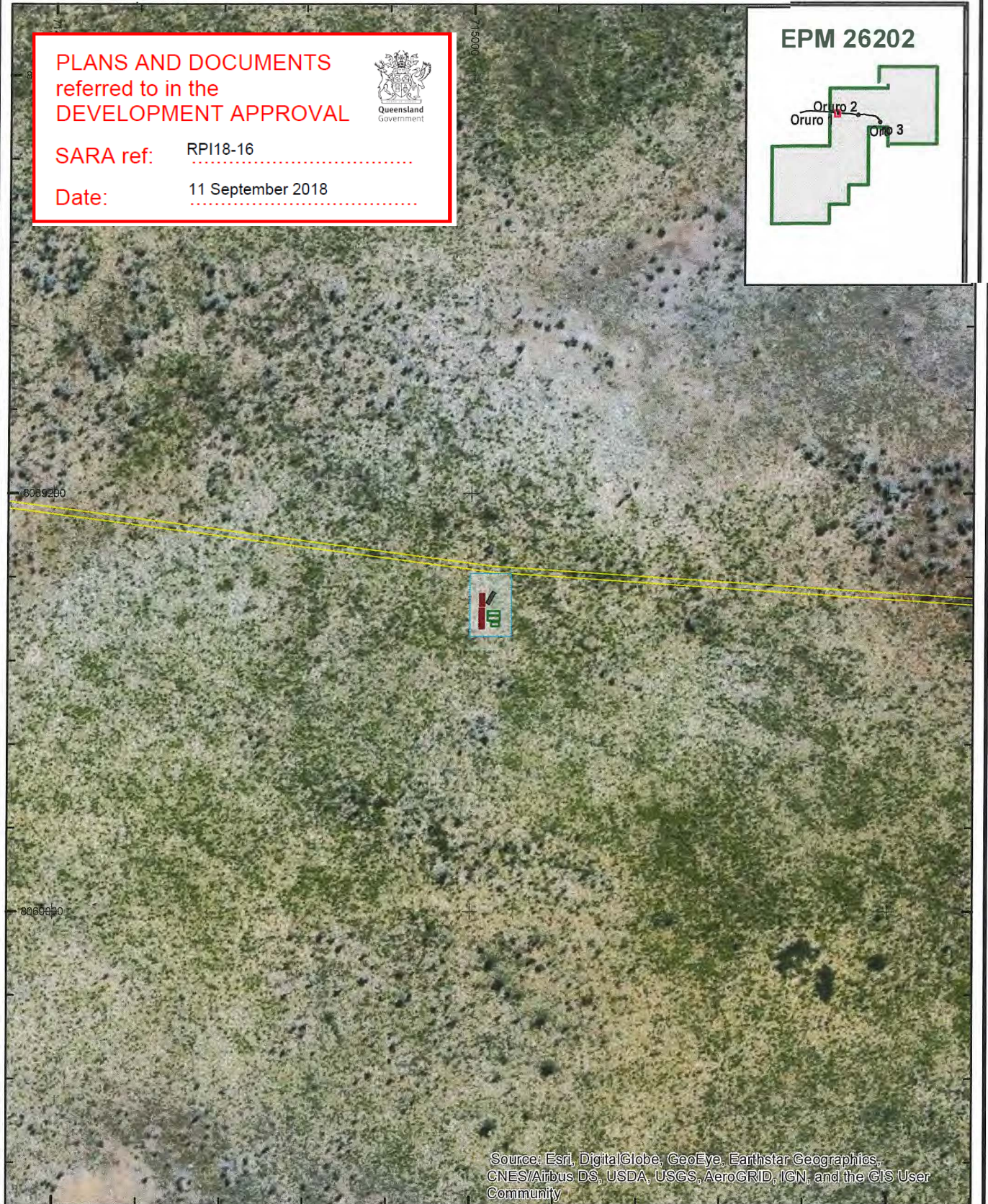
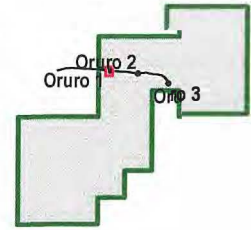
**PLANS AND DOCUMENTS  
referred to in the  
DEVELOPMENT APPROVAL**



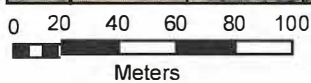
**SARA ref:** RPI18-16

**Date:** 11 September 2018

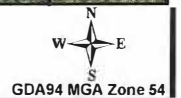
**EPM 26202**



Source: Esri, DigitalGlobe, GeoEye, Earthstar Geographics, CNES/Airbus DS, USDA, USGS, AeroGRID, IGN, and the GIS User Community



**LYND RESOURCES PTY LTD**  
**EPM 26202**



**Footprint of the Oruro  
1 drill pad**

**Drawn By:** Chris Schlebusch

**Requested by:** Richard Smith

**Date:** 2/07/2018

- EPM Boundary
- Proposed Track (3m width - to scale)
- Proposed Pad (20m x 30m)
- Vehicle (Drill Rig & Rod Sloop)
- Core Trestle
- Sump

**Figure 1**

Sheet No.

ADMG\_ARD\_LYN001\_MAP\_0091\_A

Data sources:  
Qld Department of Natural Resources, Mines and Energy,  
Geoscience Australia, Esri



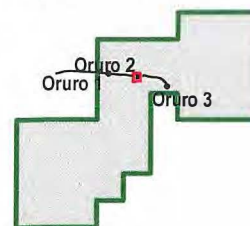
**PLANS AND DOCUMENTS  
referred to in the  
DEVELOPMENT APPROVAL**



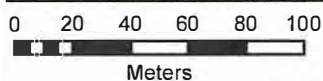
**SARA ref:** RPI18-16

**Date:** 11 September 2018

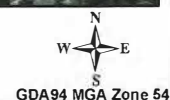
**EPM 26202**



Source: Esri, DigitalGlobe, GeoEye, Earthstar Geographics, CNES/Airbus DS, USDA, USGS, AeroGRID, IGN, and the GIS User Community



**LYND RESOURCES PTY LTD**  
**EPM 26202**



**Footprint of the Oruro 2  
drill pad (non-target drill  
pad)**

**Drawn By:** Chris Schlebusch

**Requested by:** Richard Smith

**Date:** 2/07/2018

- EPM Boundary
- Proposed Track (3m width - to scale)
- Proposed Pad (20m x 30m)
- Vehicle (Drill Rig & Rod Sloop)
- Core Trestle
- Sump

**Figure 2**

Sheet No.

ADMG\_ARD\_LYN001\_MAP\_0092\_A

Data sources:  
Qld Department of Natural Resources, Mines and Energy,  
Geoscience Australia, Esri



EPM 26202

Oruro 2  
Oruro 3

PLANS AND DOCUMENTS  
referred to in the  
DEVELOPMENT APPROVAL



SARA ref: RPI18-16

Date: 11 September 2018

Source: Esri, DigitalGlobe, GeoEye, Earthstar Geographics,  
CNES/Airbus DS, USDA, USGS, AeroGRID, IGN, and the GIS User  
Community

0 20 40 60 80 100  
Meters

LYND RESOURCES PTY LTD  
EPM 26202

N  
W E  
S  
GDA94 MGA Zone 54



Footprint of the Oruro  
3 drill pad (non-target  
drill pad)

Drawn By: Chris Schlebusch

Requested by: Richard Smith

Date: 2/07/2018

- EPM Boundary
- Proposed Track (3m width - to scale)
- Proposed Pad (20m x 30m)
- Vehicle (Drill Rig & Rod Sloop)
- Core Trestle
- Sump

Figure 3

Sheet No.

ADMG\_ARD\_LYN001\_MAP\_0093\_A

Data sources:  
Qld Department of Natural Resources, Mines and Energy,  
Geoscience Australia, Esri

Path: S:\Plans\Project\_Specific\Ardent\LYN001\RTPL\_ARD\_LYN001\_MAP\_0093\_A EPM26202 Oruro 3 DrillPad.mxd



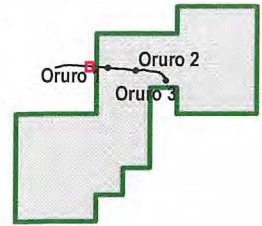
**PLANS AND DOCUMENTS**  
referred to in the  
**DEVELOPMENT APPROVAL**



**SARA ref:** RPI18-16

**Date:** 11 September 2018

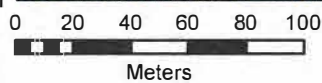
**EPM 26202**



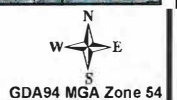
8069400

8069200

Source: Esri, DigitalGlobe, GeoEye, Earthstar Geographics, CNES/Airbus DS, USDA, USGS, AeroGRID, IGN, and the GIS User Community



**LYND RESOURCES PTY LTD**  
**EPM 26202**



**Footprint of the  
Oruro campsite and  
laydown area**

**Drawn By:** Chris Schlebusch

**Requested by:** Richard Smith

**Date:** 2/07/2018

- Proposed Track (3m width - to scale)
- Temporary Fuel and Laydown (20m x 20m)
- Temporary Mobile Campsite (20m x 20m)
- MSES strategic environmental area [designated precinct]

**Figure 4**

Sheet No.

ADMG\_ARD\_LYN001\_MAP\_0070\_A

Data sources:  
Qld Department of Natural Resources, Mines and Energy,  
Geoscience Australia, Esri

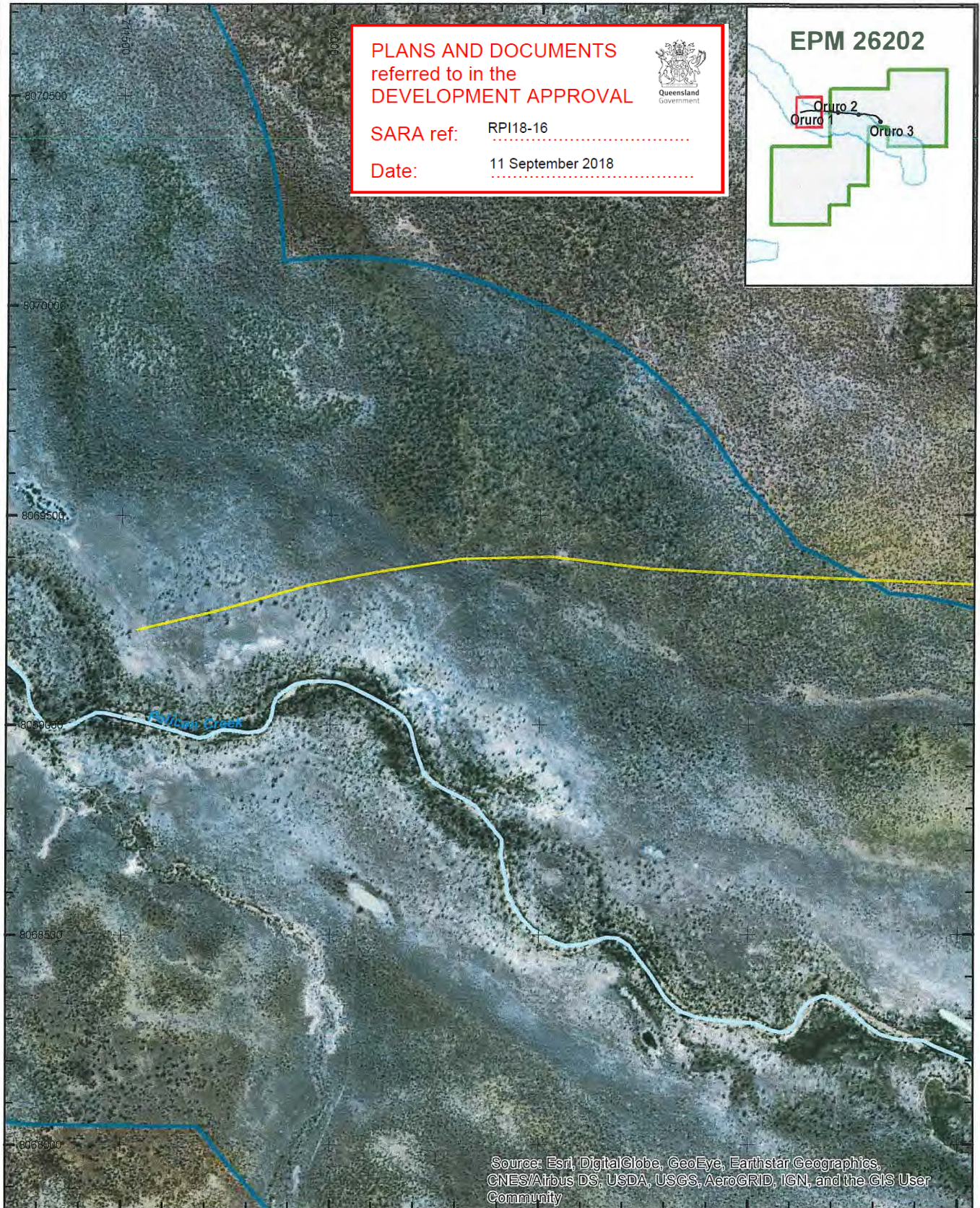
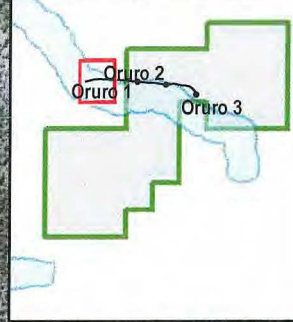


**PLANS AND DOCUMENTS  
referred to in the  
DEVELOPMENT APPROVAL**



**SARA ref:** RPI18-16  
**Date:** 11 September 2018

**EPM 26202**



Source: Esri, DigitalGlobe, GeoEye, Earthstar Geographics, CNES/Airbus DS, USDA, USGS, AeroGRID, IGN, and the GIS User Community

0 100 200 300 400 500  
Meters

**LYND RESOURCES PTY LTD**  
**EPM 26202**



**Oruro  
Designated Precinct  
Disturbance Section 1**

- Major Watercourse
- Proposed Track (3m width - to scale)
- MSES strategic environmental area [designated precinct]

**Figure 9**  
Sheet No.

ADMG\_ARD\_LYN001\_MAP\_0114\_A

**Drawn By:** Chris Schlebusch

**Requested by:** Richard Smith

**Date:** 6/07/2018

Data sources:  
Old Department of Natural Resources, Mines and Energy,  
Geoscience Australia, Esri



**PLANS AND DOCUMENTS  
referred to in the  
DEVELOPMENT APPROVAL**



**SARA ref:** RPI18-16

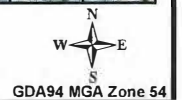
**Date:** 11 September 2018

**EPM 26202**

Oruro 1  
Oruro 2  
Oruro 3



**LYND RESOURCES PTY LTD**  
**EPM 26202**



**Oruro  
Designated Precinct  
Disturbance Section 2**

- EPM Boundary
- Major Watercourse
- Proposed Track (3m width - to scale)
- Proposed Pad (20m x 30m)
- MSES strategic environmental area [designated precinct]

**Figure 10**

Sheet No.

ADMG\_ARD\_LYN001\_MAP\_0115\_A

**Drawn By:** Chris Schlebusch

**Requested by:** Richard Smith

**Date:** 6/07/2018

Data sources:  
Qld Department of Natural Resources, Mines and Energy,  
Geoscience Australia, Esri



Figure 11: Schematic of proposed drill pad

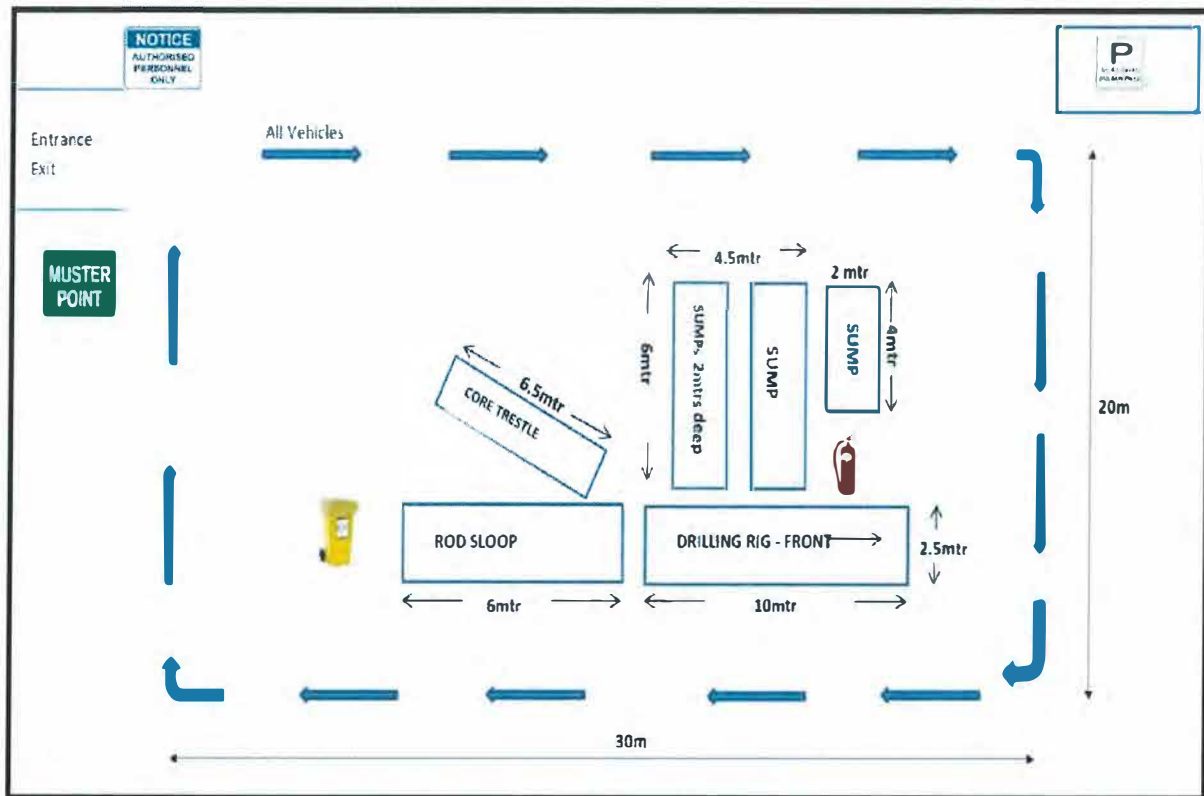


Figure 12: Schematic of Fuel Storage and Laydown Area

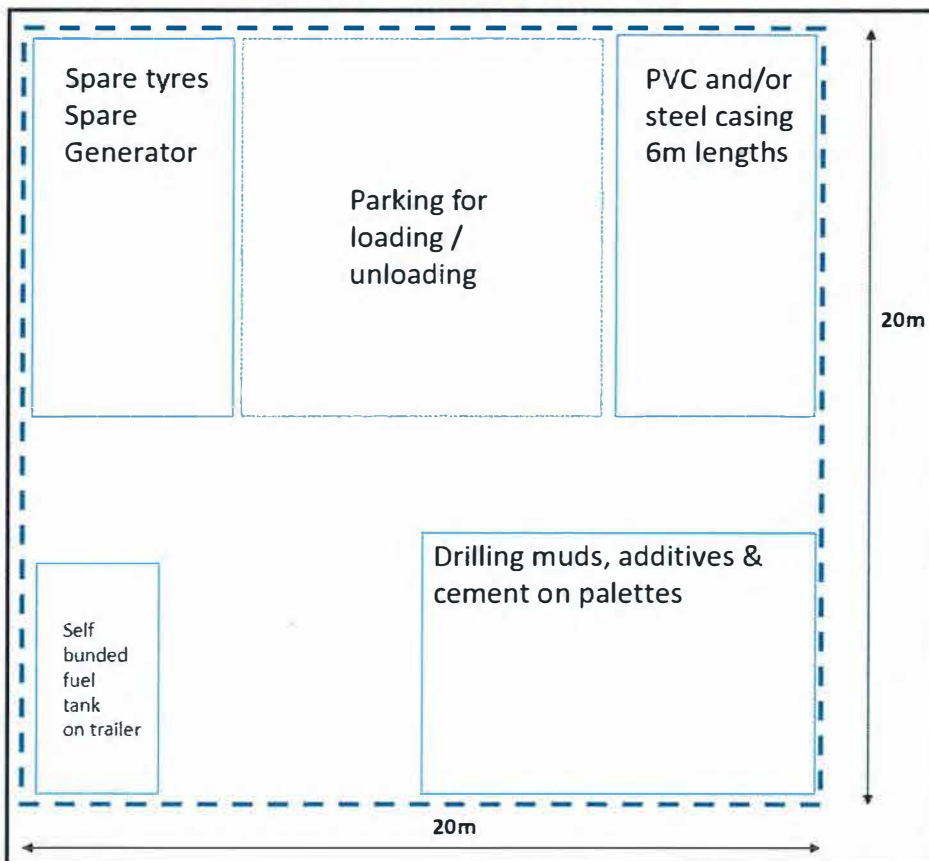




Figure 13: Schematic of Temporary Mobile Campsite

