

**PLANS AND DOCUMENTS  
referred to in the  
DEVELOPMENT APPROVAL**



**SARA ref:** RPI18-015

**Date:** 11 September 2018



**EPM 26403**

Huanchaca 1

Huanchaca 2

Huanchaca 3

Source: Esri, DigitalGlobe, GeoEye, Earthstar Geographics, CNES/Airbus DS, USDA, USGS, AeroGRID, IGN, and the GIS User Community

0 0.4 0.8 1.2 1.6 2  
Kilometers

**LYND RESOURCES PTY LTD**  
**EPM 26403**

GDA94 MGA Zone 54



**Location of Proposed  
Exploration Activities  
within Gulf Rivers SEA**

- EPM Boundary
- Proposed Drill Pad (30m x 20m)
- Proposed Track (3m width)

- Areas of Regional Interest
- Strategic Environmental Area
  - Strategic Environmental Area - Designated Precinct

**Figure 1**

Sheet No.

ADMG\_ARD\_LYN001\_MAP\_0056\_A

**Drawn By:** Chris Schlebusch

**Requested by:** Richard Smith

**Date:** 30/04/2018

Data sources:  
Q'd Department of Natural Resources and Mines,  
National Native Title Tribunal  
Geoscience Australia, Esri



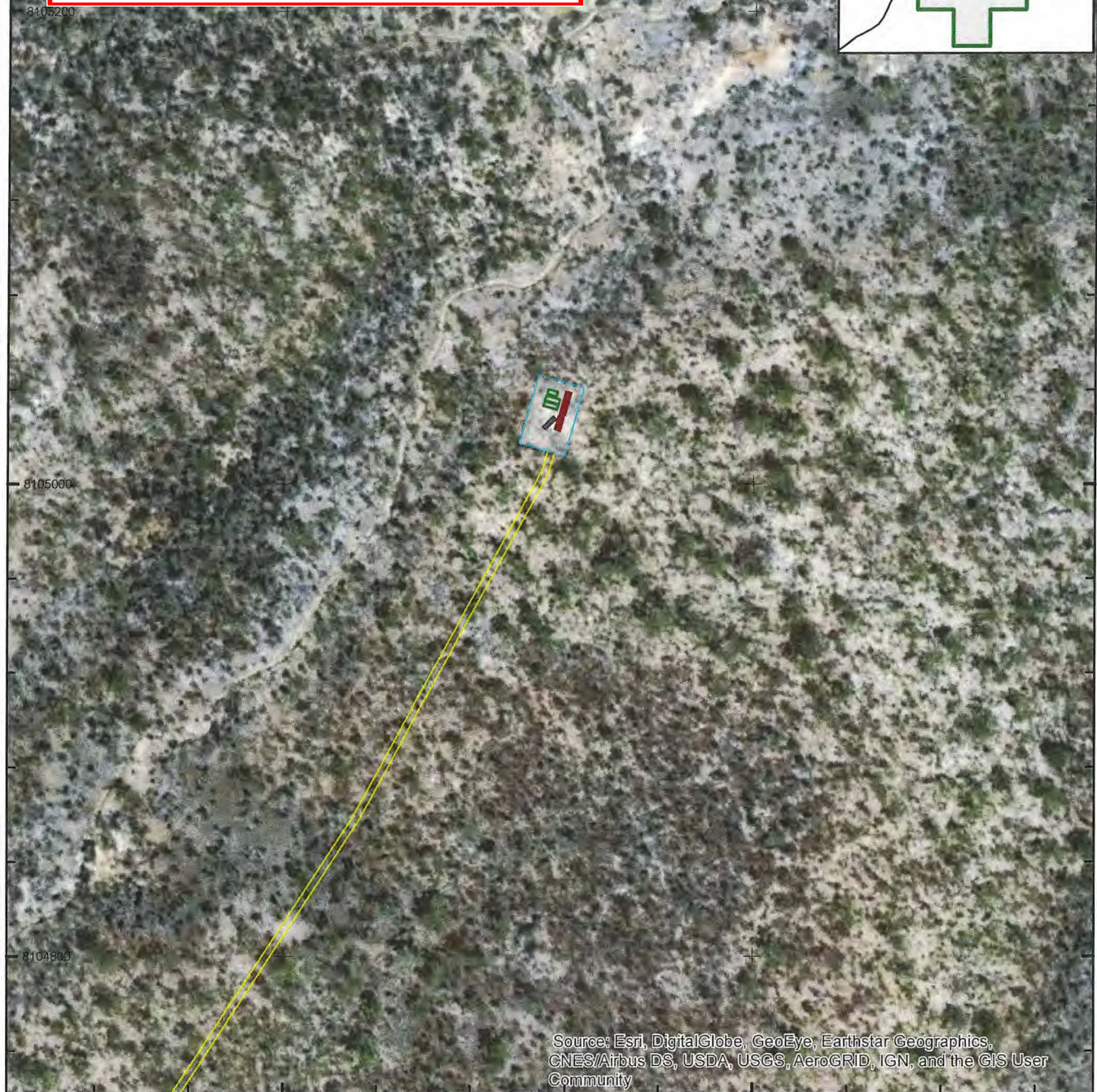
**PLANS AND DOCUMENTS  
referred to in the  
DEVELOPMENT APPROVAL**



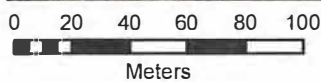
**SARA ref:** RPI18-015

**Date:** 11 September 2018

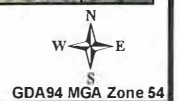
**EPM 26403**



Source: Esri, DigitalGlobe, GeoEye, Earthstar Geographics, CNES/Airbus DS, USDA, USGS, AeroGRID, IGN, and the GIS User Community



**LYND RESOURCES PTY LTD**  
**EPM 26403**



**Footprint of the  
Huanchaca 1 drill pad  
(non-target drillhole)**

**Drawn By:** Chris Schlebusch

**Requested by:** Richard Smith

**Date:** 2/07/2018

- EPM Boundary
- Proposed Track (3m width - to scale)
- Proposed Pad (20m x 30m)
- Vehicle (Drill Rig & Rod Sloop)
- Core Trestle
- Sump

**Figure 1**

Sheet No.

ADMG\_ARD\_LYN001\_MAP\_0082\_A

Data sources:  
Qld Department of Natural Resources, Mines and Energy,  
Geoscience Australia, Esri



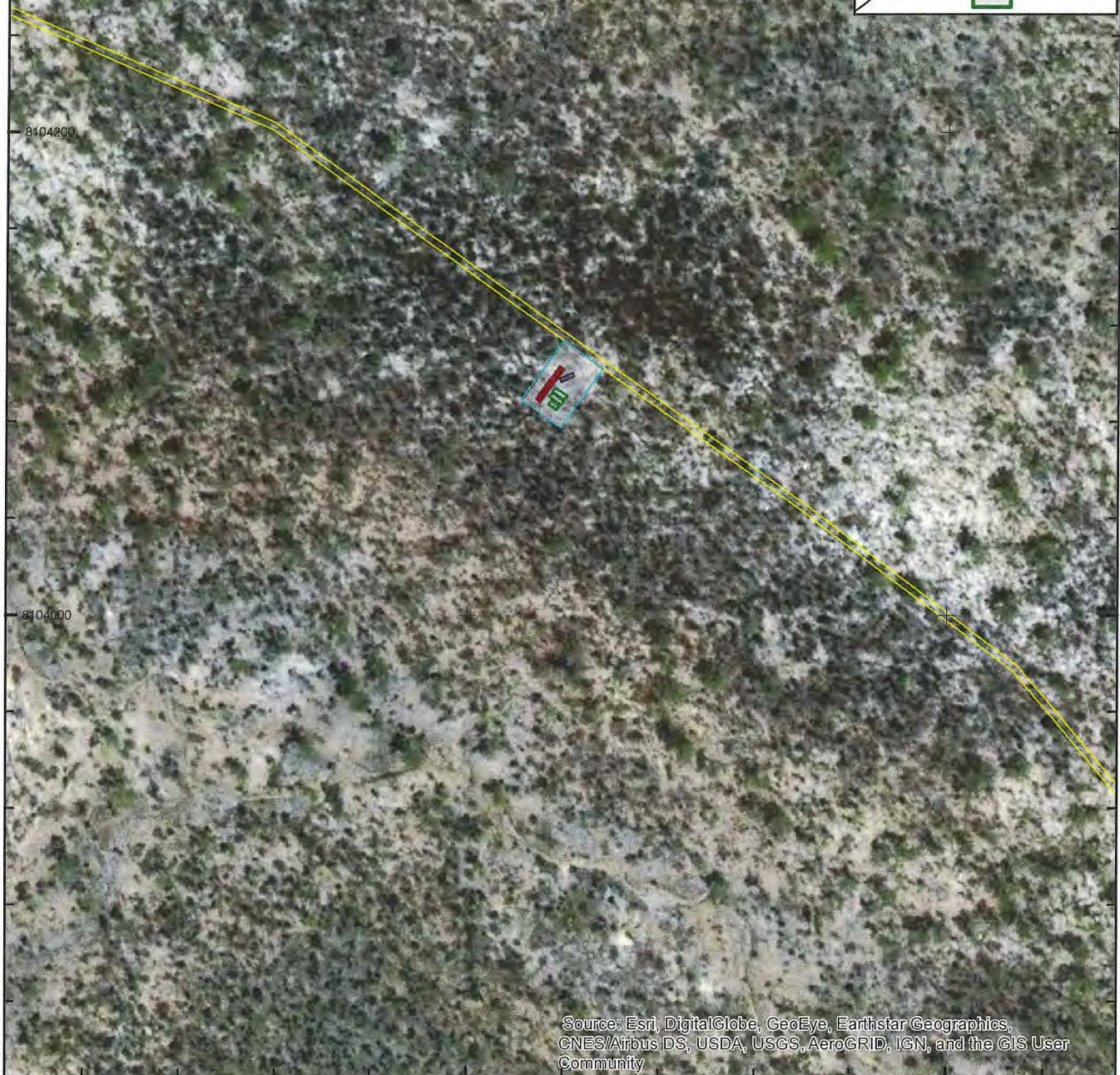
**PLANS AND DOCUMENTS  
referred to in the  
DEVELOPMENT APPROVAL**



**SARA ref:** RPI18-015

**Date:** 11 September 2018

**EPM 26403**



Source: Esri, DigitalGlobe, GeoEye, Earthstar Geographics, CNES/Airbus DS, USDA, USGS, AeroGRID, IGN, and the GIS User Community

0 20 40 60 80 100  
Meters

**LYND RESOURCES PTY LTD**  
**EPM 26403**



**Footprint of the  
Huanchaca 2 drill pad**

**Drawn By:** Chris Schlebusch

**Requested by:** Richard Smith

**Date:** 2/07/2018

- EPM Boundary
- Proposed Track (3m width - to scale)
- Proposed Pad (20m x 30m)
- Vehicle (Drill Rig & Rod Sloop)
- Core Trestle
- Sump

**Figure 2**

**Sheet No.**

ADMG\_ARD\_LYN001\_MAP\_0083\_A

Data sources:  
Qld Department of Natural Resources, Mines and Energy,  
Geoscience Australia, Esri



EPM 26403

Huanchaca 1 Huanchaca 2  
Huanchaca 3

PLANS AND DOCUMENTS  
referred to in the  
DEVELOPMENT APPROVAL

SARA ref: RPI18-015

Date: 11 September 2018



Source: Esri, DigitalGlobe, GeoEye, Earthstar Geographics,  
CNES/Airbus DS, USDA, USGS, AeroGRID, IGN, and the GIS User  
Community

0 20 40 60 80 100  
Meters

LYND RESOURCES PTY LTD  
EPM 26403

N  
W E  
S  
GDA94 MGA Zone 54



Footprint of the  
Huanchaca 3 drill pad

- EPM Boundary
- Proposed Track (3m width - to scale)
- Proposed Pad (20m x 30m)
- Vehicle (Drill Rig & Rod Sloop)
- Core Trestle
- Sump

Figure 3

Sheet No.

ADMG\_ARD\_LYN001\_MAP\_0084\_A

Drawn By: Chris Schlebusch

Requested by: Richard Smith

Date: 2/07/2018

Data sources:  
Qld Department of Natural Resources, Mines and Energy,  
Geoscience Australia, Esri

Path: S:\Plans\Project\_Specific\Ardent\LYN001\RTPL\_ARD\_LYN001\_MAP\_0084\_A EPM26403 Huanchaca 3 DrillPad.mxd



**PLANS AND DOCUMENTS  
referred to in the  
DEVELOPMENT APPROVAL**



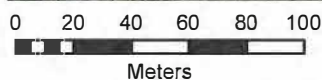
**SARA ref:** RPI18-015

**Date:** 11 September 2018

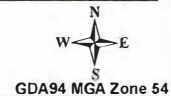
**EPM 26403**



Source: Esri, DigitalGlobe, GeoEye, Earthstar Geographics, CNES/Airbus DS, USDA, USGS, AeroGRID, IGN, and the GIS User Community



**LYND RESOURCES PTY LTD**  
**EPM 26403**



**Footprint of the  
Huanchaca  
campsite and  
laydown area**

- Proposed Track (3m width - to scale)
- Temporary Fuel and Laydown (20m x 20m)
- Temporary Mobile Campsite (20m x 20m)

**Figure 4**  
Sheet No.

ADMG\_ARD\_LYN001\_MAP\_0073\_A

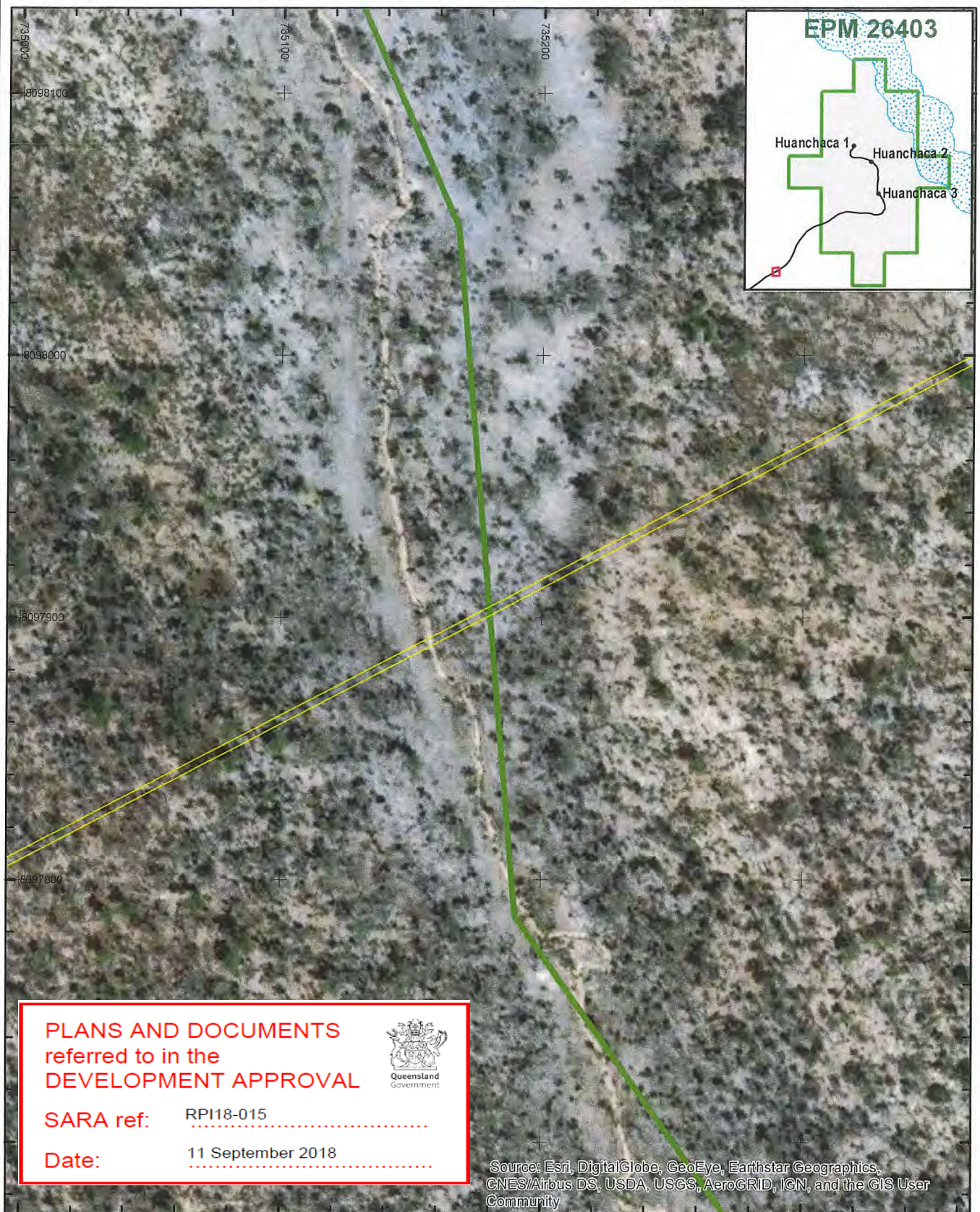
**Drawn By:** Chris Schlebusch

**Requested by:** Richard Smith

**Date:** 28/06/2018

Data sources:  
Old Department of Natural Resources, Mines and Energy,  
Geoscience Australia, Esri





0 10 20 30 40 50  
Meters

**LYND RESOURCES PTY LTD**  
**EPM 26403**

N  
W E  
S  
GDA94 MGA Zone 54



**Huanchaca access  
track regulated  
vegetation crossing 1**

- Proposed Track (3m width - to scale)
- MSES regulated vegetation [defined watercourse]
- MSES strategic environmental area [designated precinct]

**Figure 6**

Sheet No.

ADMG\_ARD\_LYN001\_MAP\_0096\_A

Drawn By: Chris Schlebusch

Requested by: Richard Smith

Date: 3/07/2018

Data sources:  
Qld Department of Natural Resources, Mines and Energy,  
Geoscience Australia, Esri



**PLANS AND DOCUMENTS  
referred to in the  
DEVELOPMENT APPROVAL**



**SARA ref:** RPI18-015

**Date:** 11 September 2018

**EPM 26403**

Huanchaca 1  
Huanchaca 2  
Huanchaca 3



Source: Esri, DigitalGlobe, GeoEye, Earthstar Geographics, CNES/Airbus DS, USDA, USGS, AeroGRID, IGN, and the GIS User Community

0 10 20 30 40 50  
Meters

**LYND RESOURCES PTY LTD**  
**EPM 26403**

N  
W E  
S  
GDA94 MGA Zone 54



**Huanchaca access  
track regulated  
vegetation crossing 2**

- Proposed Track (3m width - to scale)
- MSES regulated vegetation [defined watercourse]
- MSES strategic environmental area [designated precinct]

**Figure 7**  
Sheet No.

ADMG\_ARD\_LYN001\_MAP\_0097\_B

**Drawn By:** Chris Schlebusch

**Requested by:** Richard Smith

**Date:** 4/07/2018

Data sources:  
Qld Department of Natural Resources, Mines and Energy,  
Geoscience Australia, Esri



**PLANS AND DOCUMENTS  
referred to in the  
DEVELOPMENT APPROVAL**

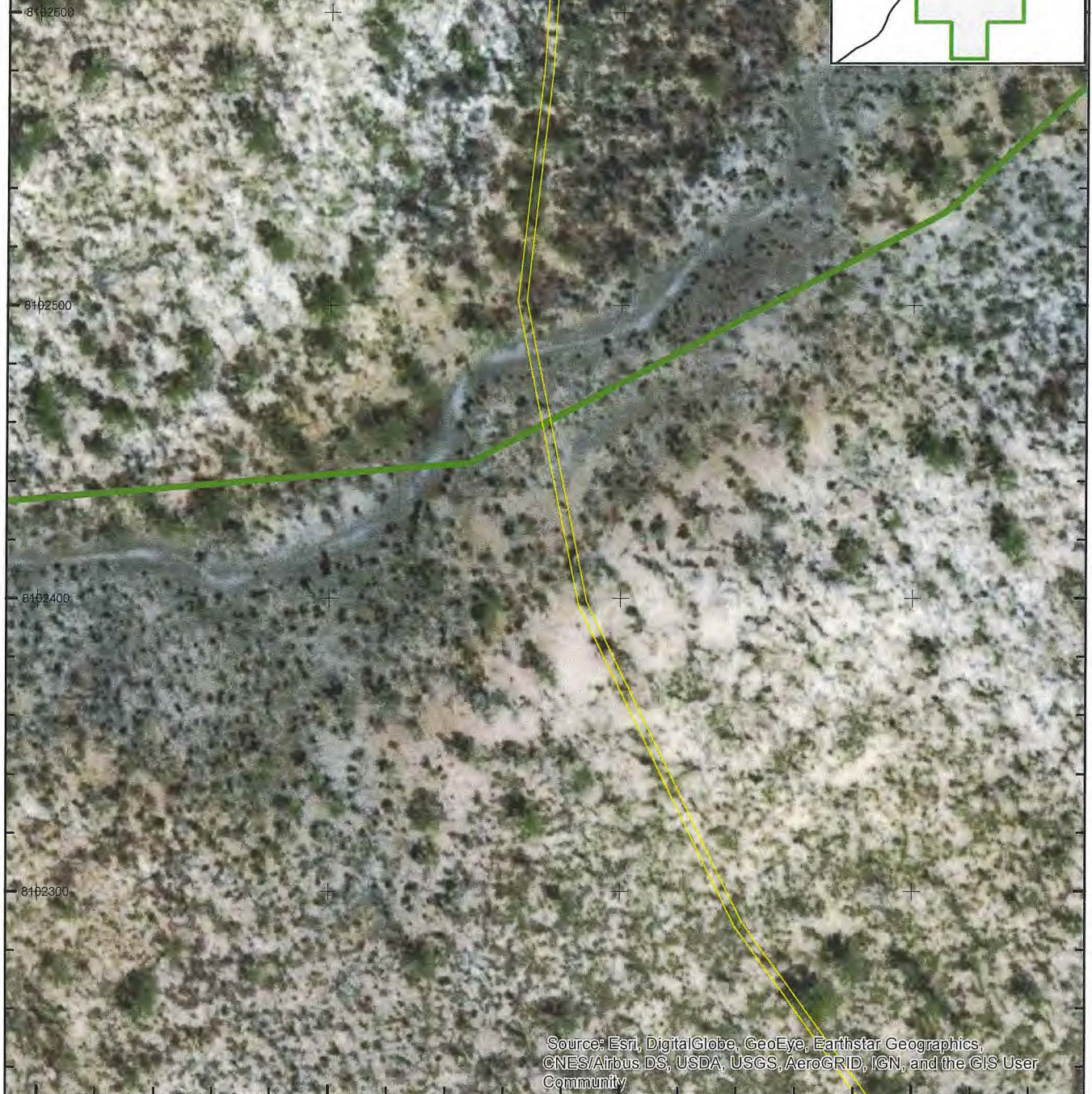


**SARA ref:** RPI18-015

**Date:** 11 September 2018

**EPM 26403**

Huanchaca 1  
Huanchaca 2  
Huanchaca 3



Source: Esri, DigitalGlobe, GeoEye, Earthstar Geographics, CNES/Airbus DS, USDA, USGS, AeroGRID, IGN, and the GIS User Community

0 10 20 30 40 50  
Meters

**LYND RESOURCES PTY LTD**  
**EPM 26403**

N  
W E  
S  
GDA94 MGA Zone 54



**Huanchaca access  
track regulated  
vegetation crossing 3**

- Proposed Track (3m width - to scale)
- MSES regulated vegetation [defined watercourse]
- MSES strategic environmental area [designated precinct]

**Figure 8**

Sheet No.

ADMG\_ARD\_LYN001\_MAP\_0098\_A

Drawn By: Chris Schlebusch

Requested by: Richard Smith

Date: 3/07/2018

Data sources:  
Old Department of Natural Resources, Mines and Energy,  
Geoscience Australia, Esri



Figure 9: Schematic of proposed drill pad

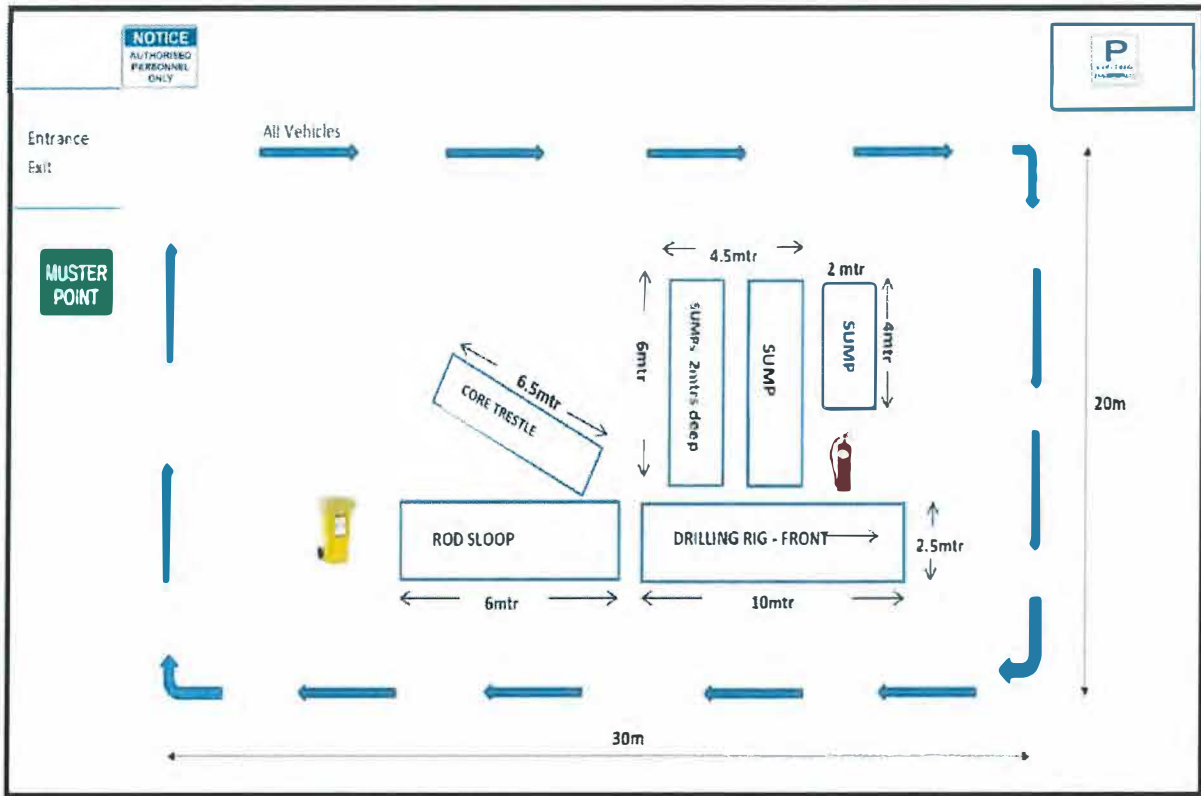


Figure 10: Schematic of Fuel Storage and Laydown Area

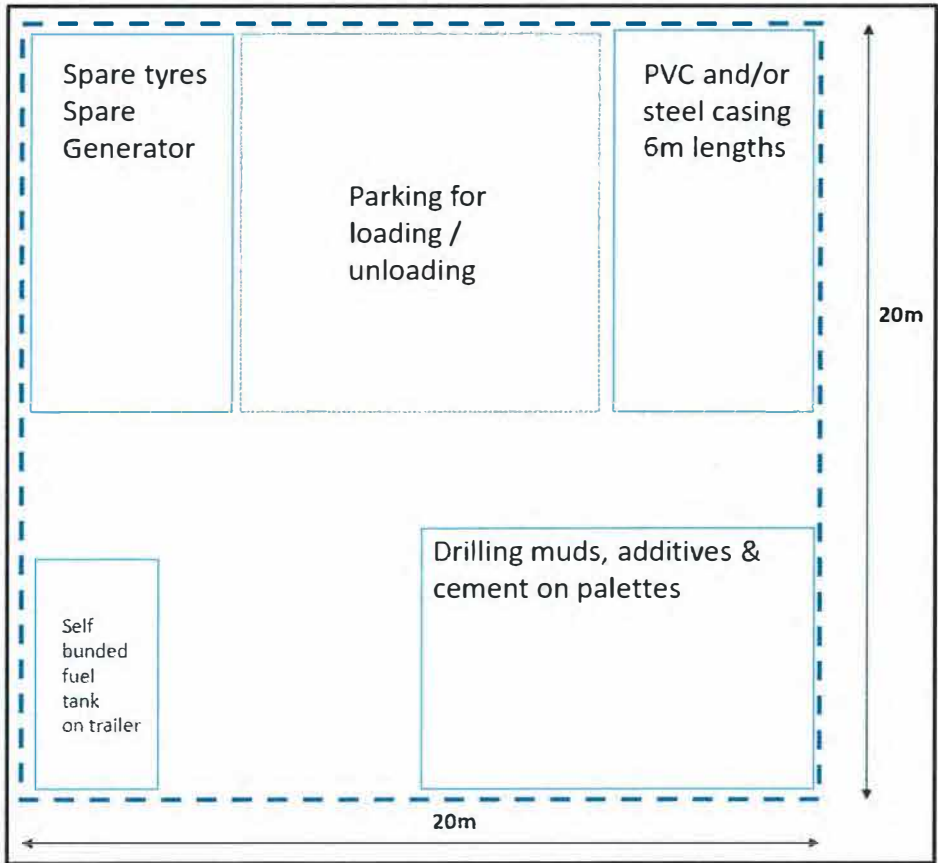




Figure 11: Schematic of Temporary Mobile Campsite

