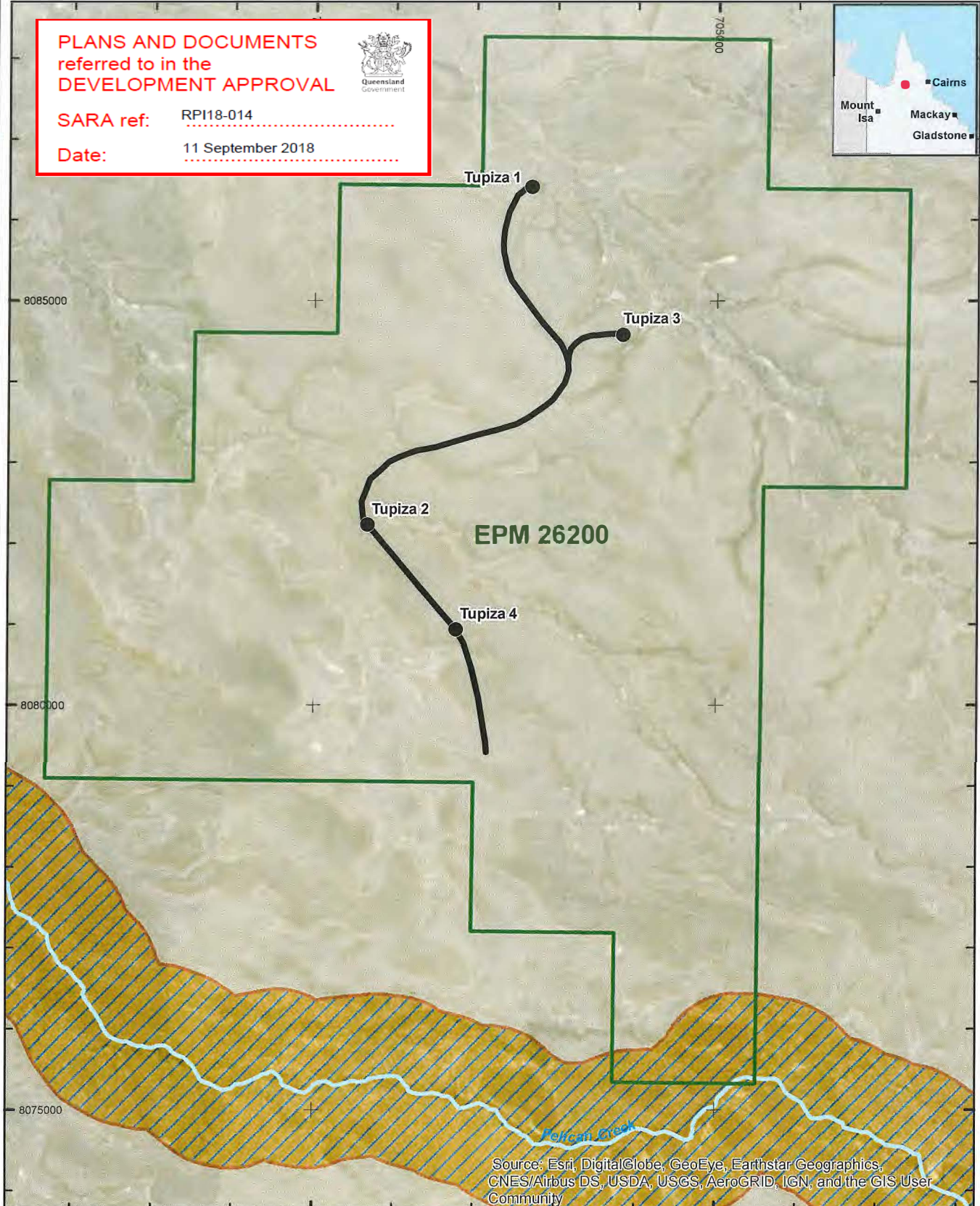


**PLANS AND DOCUMENTS  
referred to in the  
DEVELOPMENT APPROVAL**



**SARA ref:** RPI18-014

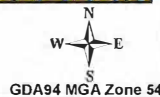
**Date:** 11 September 2018



Source: Esri, DigitalGlobe, GeoEye, Earthstar Geographics, CNES/Airbus DS, USDA, USGS, AeroGRID, IGN, and the GIS User Community



**LYND RESOURCES PTY LTD**  
**EPM 26200**



**Location of Proposed  
Exploration Activities  
within the Gulf Rivers  
SEA**

- EPM Boundary
- Major Watercourse
- Proposed Drill Pad (20m x 30m)
- Proposed Track (3m width)

- Areas of Regional Interest
- Strategic Environmental Area
  - Strategic Environmental Area - Designated Precinct

**Figure 1**  
Sheet No.  
ADMG\_ARD\_LYN001\_MAP\_0048\_A

**Drawn By:** Chris Schlebusch  
**Requested by:** Richard Smith  
**Date:** 30/04/2018

Data sources:  
Qld Department of Natural Resources and Mines,  
National Native Title Tribunal  
Geoscience Australia, Esri

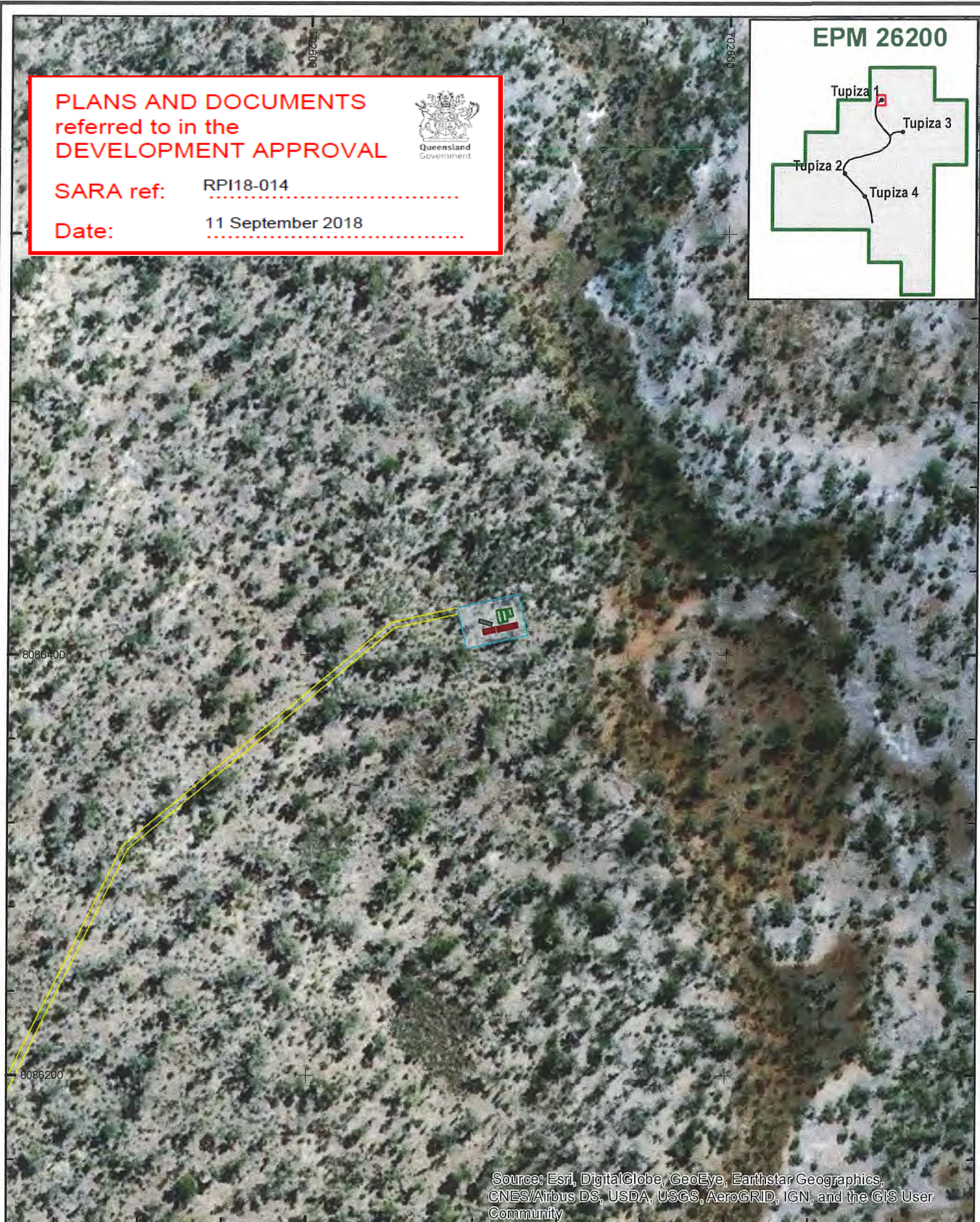
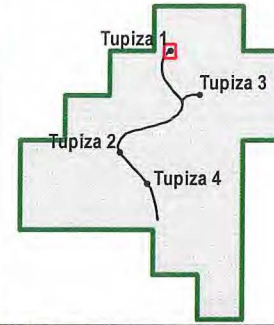
**PLANS AND DOCUMENTS  
referred to in the  
DEVELOPMENT APPROVAL**



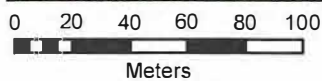
**SARA ref:** RPI18-014

**Date:** 11 September 2018

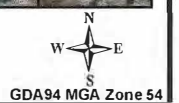
**EPM 26200**



Source: Esri, DigitalGlobe, GeoEye, Earthstar Geographics, CNES/Airbus DS, USDA, USGS, AeroGRID, IGN, and the GIS User Community



**LYND RESOURCES PTY LTD**  
**EPM 26200**



**Footprint of the Tupiza  
1 drill pad (non-target  
drill pad)**

- EPM Boundary
- Proposed Track (3m width - to scale)
- Proposed Pad (20m x 30m)
- Vehicle (Drill Rig & Rod Sloop)
- Core Trestle
- Sump

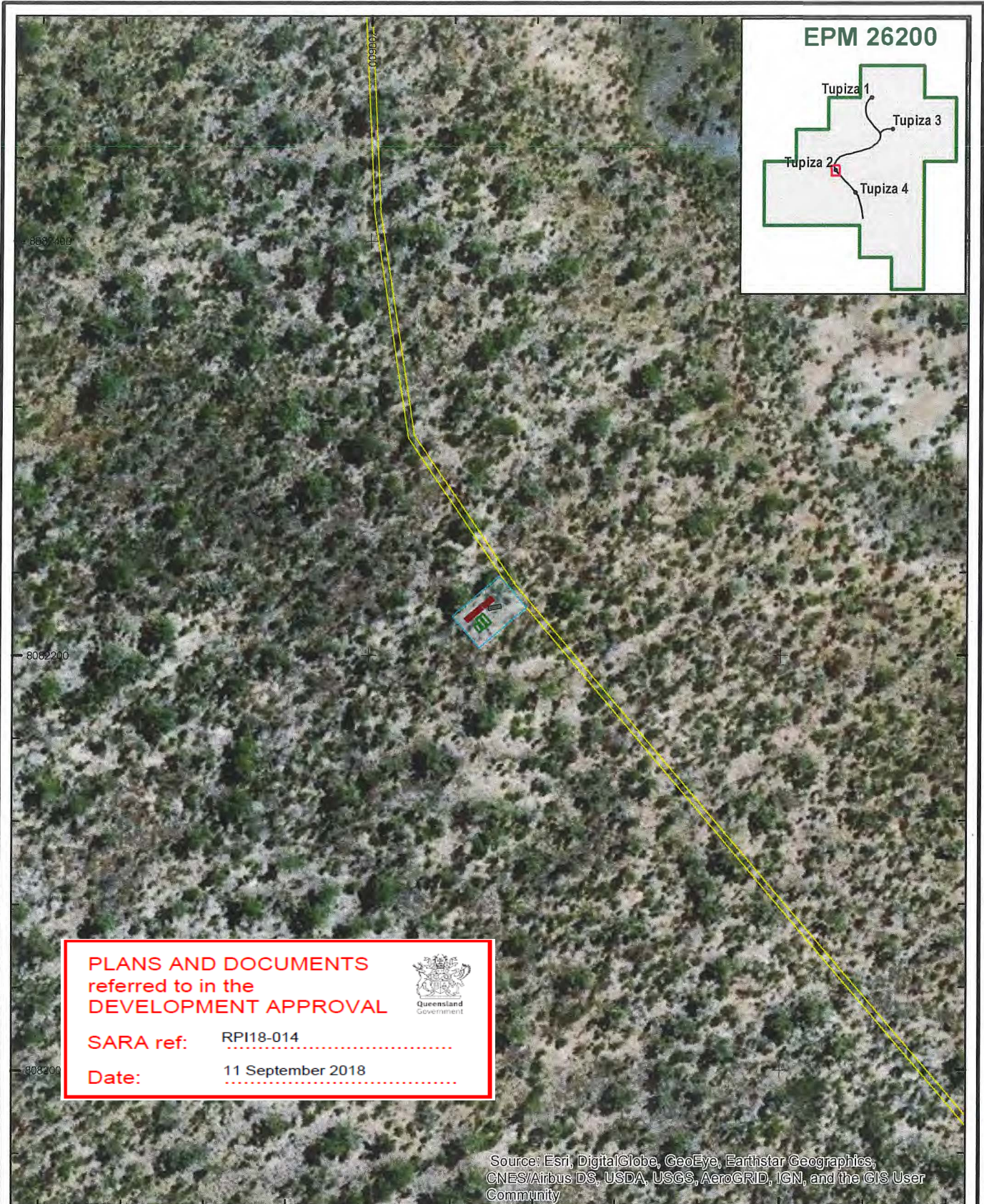
**Figure 1**  
Sheet No.

**Drawn By:** Chris Schlebusch

**Requested by:** Richard Smith

**Date:** 2/07/2018

Data sources:  
Qld Department of Natural Resources, Mines and Energy,  
Geoscience Australia, Esri



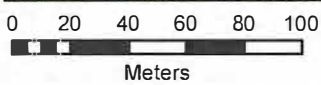
**PLANS AND DOCUMENTS**  
referred to in the  
**DEVELOPMENT APPROVAL**

**SARA ref:** RPI18-014

**Date:** 11 September 2018



Source: Esri, DigitalGlobe, GeoEye, Earthstar Geographics, CNES/Airbus DS, USDA, USGS, AeroGRID, IGN, and the GIS User Community



**LYND RESOURCES PTY LTD**  
**EPM 26200**



**Footprint of the Tupiza 2 drill pad**

- EPM Boundary
- Proposed Track (3m width - to scale)
- Proposed Pad (20m x 30m)
- Vehicle (Drill Rig & Rod Sloop)
- Core Trestle
- Sump

**Figure 2**

Sheet No.

ADMG\_ARD\_LYN001\_MAP\_0079\_A

**Drawn By:** Chris Schiebusch  
**Requested by:** Richard Smith  
**Date:** 2/07/2018

Data sources:  
Qld Department of Natural Resources, Mines and Energy,  
Geoscience Australia, Esri

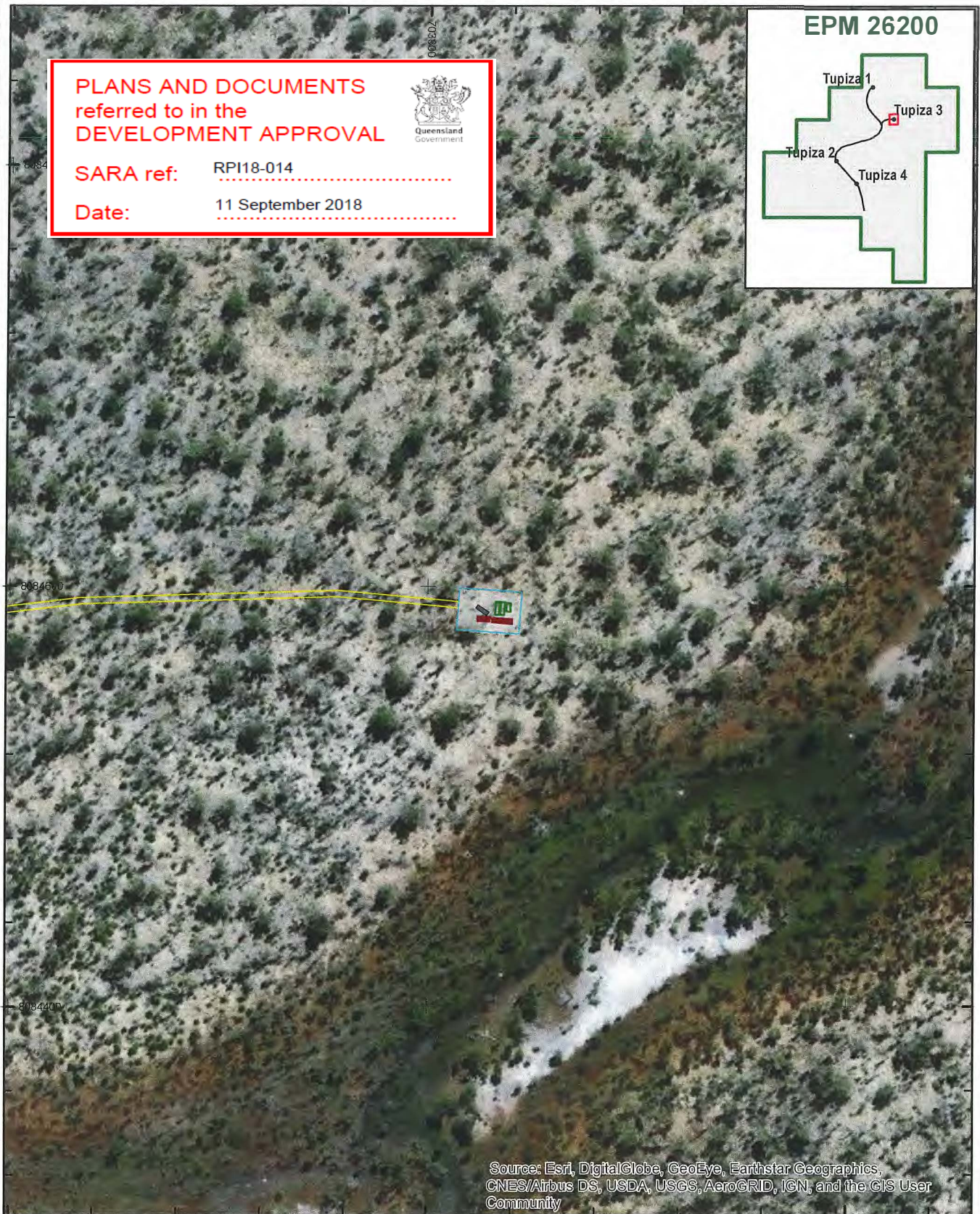
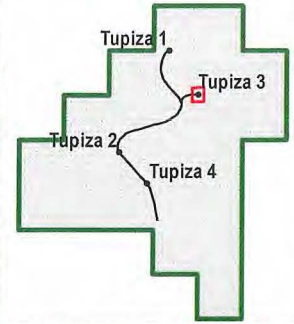
**PLANS AND DOCUMENTS  
referred to in the  
DEVELOPMENT APPROVAL**



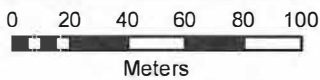
**SARA ref:** RPI18-014

**Date:** 11 September 2018

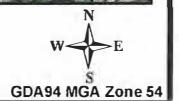
**EPM 26200**



Source: Esri, DigitalGlobe, GeoEye, Earthstar Geographics, CNES/Airbus DS, USDA, USGS, AeroGRID, IGN, and the GIS User Community



**LYND RESOURCES PTY LTD**  
**EPM 26200**



**Footprint of the Tupiza  
3 drill pad (non-target  
drill pad)**

- EPM Boundary
- Proposed Track (3m width - to scale)
- Proposed Pad (20m x 30m)
- Vehicle (Drill Rig & Rod Sloop)
- Core Trestle
- Sump

**Figure 3**

Sheet No.

ADMG\_ARD\_LYN001\_MAP\_0080\_A

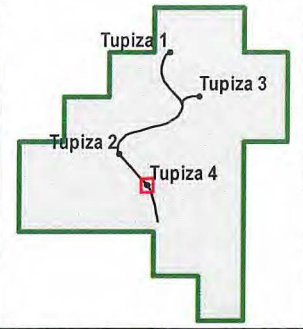
**Drawn By:** Chris Schlebusch

**Requested by:** Richard Smith

**Date:** 2/07/2018

Data sources:  
Qld Department of Natural Resources, Mines and Energy,  
Geoscience Australia, Esri

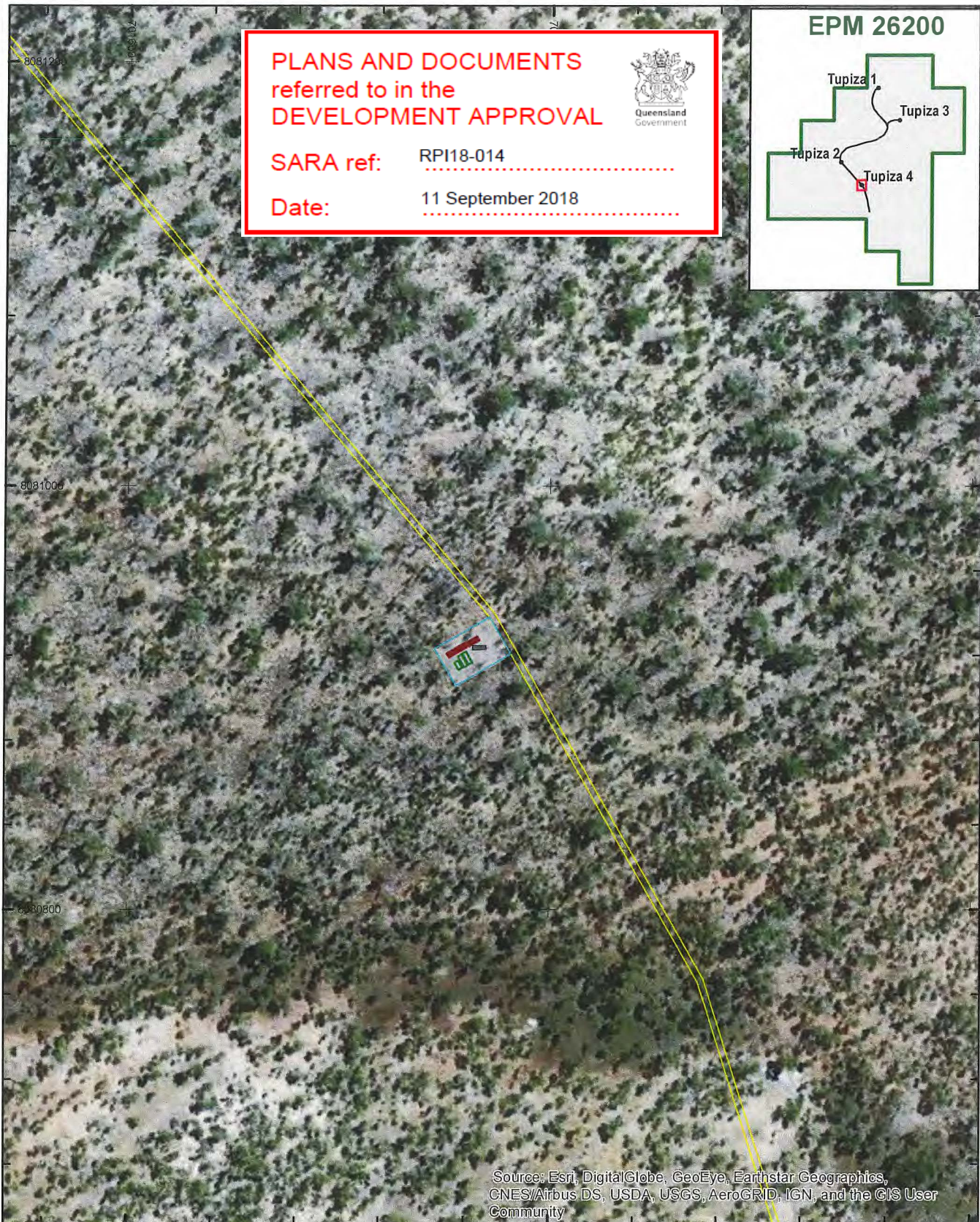
**EPM 26200**



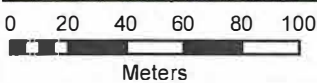
**PLANS AND DOCUMENTS**  
referred to in the  
**DEVELOPMENT APPROVAL**

**SARA ref:** RPI18-014

**Date:** 11 September 2018



Source: Esri, DigitalGlobe, GeoEye, Earthstar Geographics, CNES/Airbus DS, USDA, USGS, AeroGRID, IGN, and the GIS User Community



**LYND RESOURCES PTY LTD**  
**EPM 26200**



**Footprint of the Tupiza 4 drill pad**

- EPM Boundary
- Proposed Track (3m width - to scale)
- Proposed Pad (20m x 30m)
- Vehicle (Drill Rig & Rod Sloop)
- Core Trestle
- Sump

**Figure 4**

Sheet No.

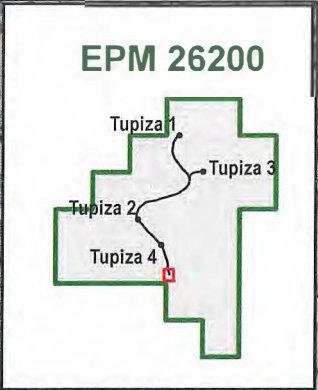
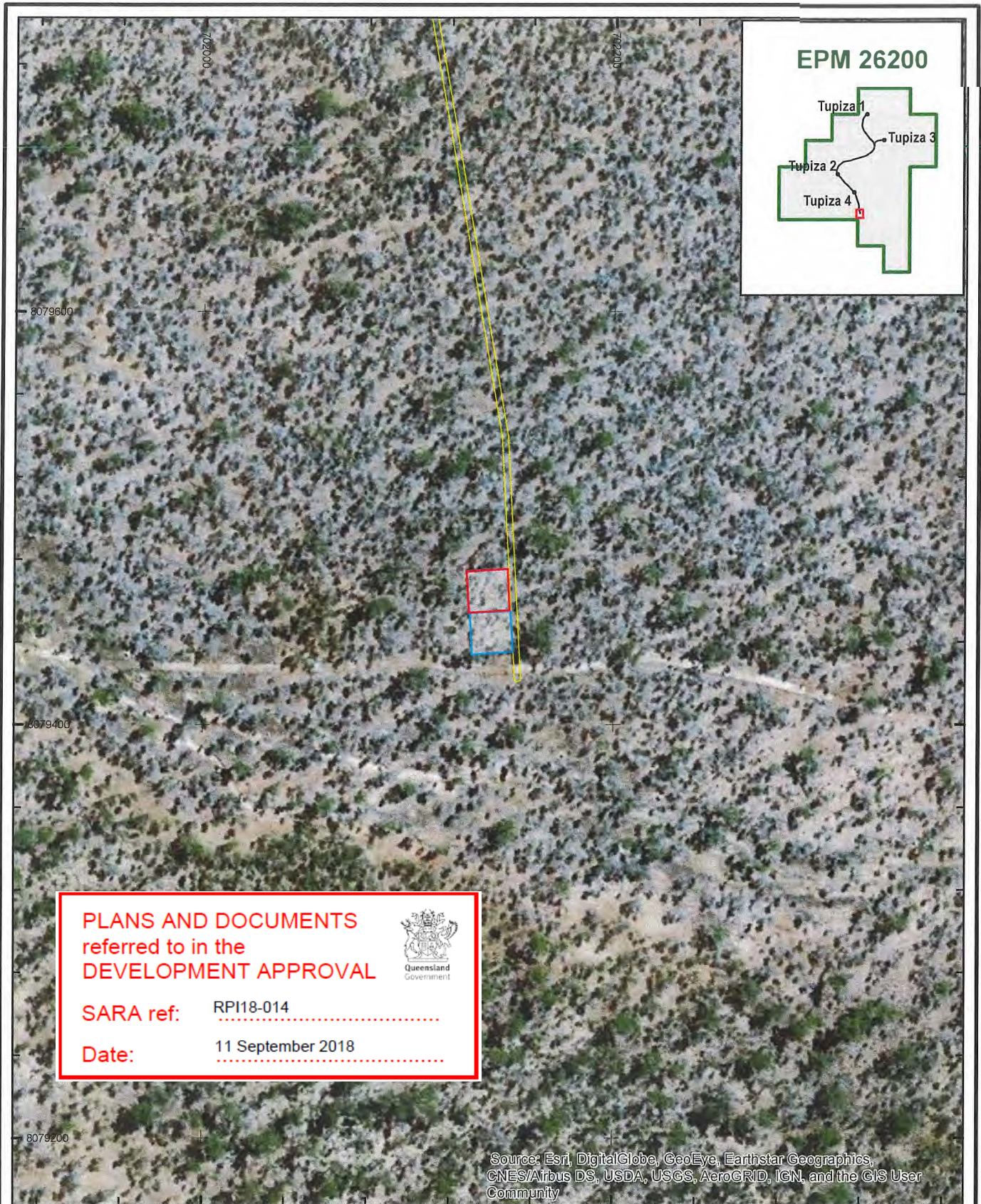
ADMG\_ARD\_LYN001\_MAP\_0081\_A

**Drawn By:** Chris Schlebusch

**Requested by:** Richard Smith

**Date:** 2/07/2018

Data sources:  
Qld Department of Natural Resources, Mines and Energy,  
Geoscience Australia, Esri



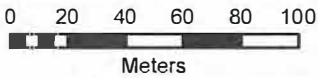
**PLANS AND DOCUMENTS**  
referred to in the  
**DEVELOPMENT APPROVAL**

**SARA ref:** RPI18-014

**Date:** 11 September 2018







Source: Esri, DigitalGlobe, GeoEye, Earthstar Geographics, CNES/Airbus DS, USDA, USGS, AeroGRID, IGN, and the GIS User Community



**LYND RESOURCES PTY LTD**  
EPM 26200



	<b>Footprint of the Tupiza campsite and laydown area</b>	<ul style="list-style-type: none"> <li> Proposed Track (3m width - to scale)</li> <li> Temporary Fuel and Laydown (20m x 20m)</li> <li> Temporary Mobile Campsite (20m x 20m)</li> </ul>
	<b>Figure 5</b> Sheet No. ADMG_ARD_LYN001_MAP_0072_A	<b>Drawn By:</b> Chris Schlebusch <b>Requested by:</b> Richard Smith <b>Date:</b> 28/06/2018

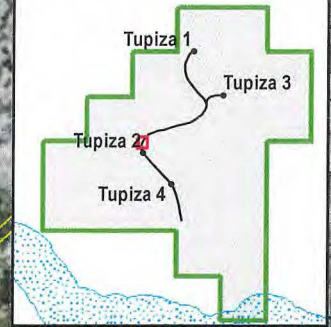
**PLANS AND DOCUMENTS  
referred to in the  
DEVELOPMENT APPROVAL**



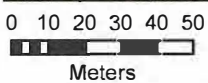
**SARA ref:** RPI18-014

**Date:** 11 September 2018

**EPM 26200**



Source: Esri, DigitalGlobe, GeoEye, Earthstar Geographics, CNES/Airbus DS, USDA, USGS, AeroGRID, IGN, and the GIS User Community



**LYND RESOURCES PTY LTD**  
EPM 26200



**Tupiza access track  
regulated vegetation  
crossing 1**

- Proposed Track (3m width - to scale)
- MSES regulated vegetation [defined watercourse]
- MSES strategic environmental area [designated precinct]

**Figure 7**

Sheet No.

ADMG\_ARD\_LYN001\_MAP\_0094\_A

Drawn By: Chris Schlebusch

Requested by: Richard Smith

Date: 3/07/2018

Data sources:  
Old Department of Natural Resources, Mines and Energy,  
Geoscience Australia, Esri

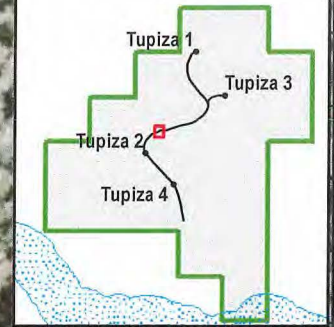
**PLANS AND DOCUMENTS  
referred to in the  
DEVELOPMENT APPROVAL**



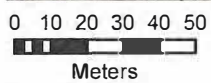
**SARA ref:** RPI18-014

**Date:** 11 September 2018

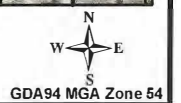
**EPM 26200**



Source: Esri, DigitalGlobe, GeoEye, Earthstar Geographics, CNES/Airbus DS, USDA, USGS, AeroGRID, IGN, and the GIS User Community



**LYND RESOURCES PTY LTD**  
EPM 26200



**Tupiza access track  
regulated vegetation  
crossing 2**

- Proposed Track (3m width - to scale)
- MSES regulated vegetation [defined watercourse]
- MSES strategic environmental area [designated precinct]

**Figure 8**

Sheet No.

ADMG\_ARD\_LYN001\_MAP\_0095\_B

Drawn By: Chris Schlebusch

Requested by: Richard Smith

Date: 4/07/2018

Data sources:  
Qld Department of Natural Resources, Mines and Energy,  
Geoscience Australia, Esri



Figure 9: Schematic of proposed drill pad

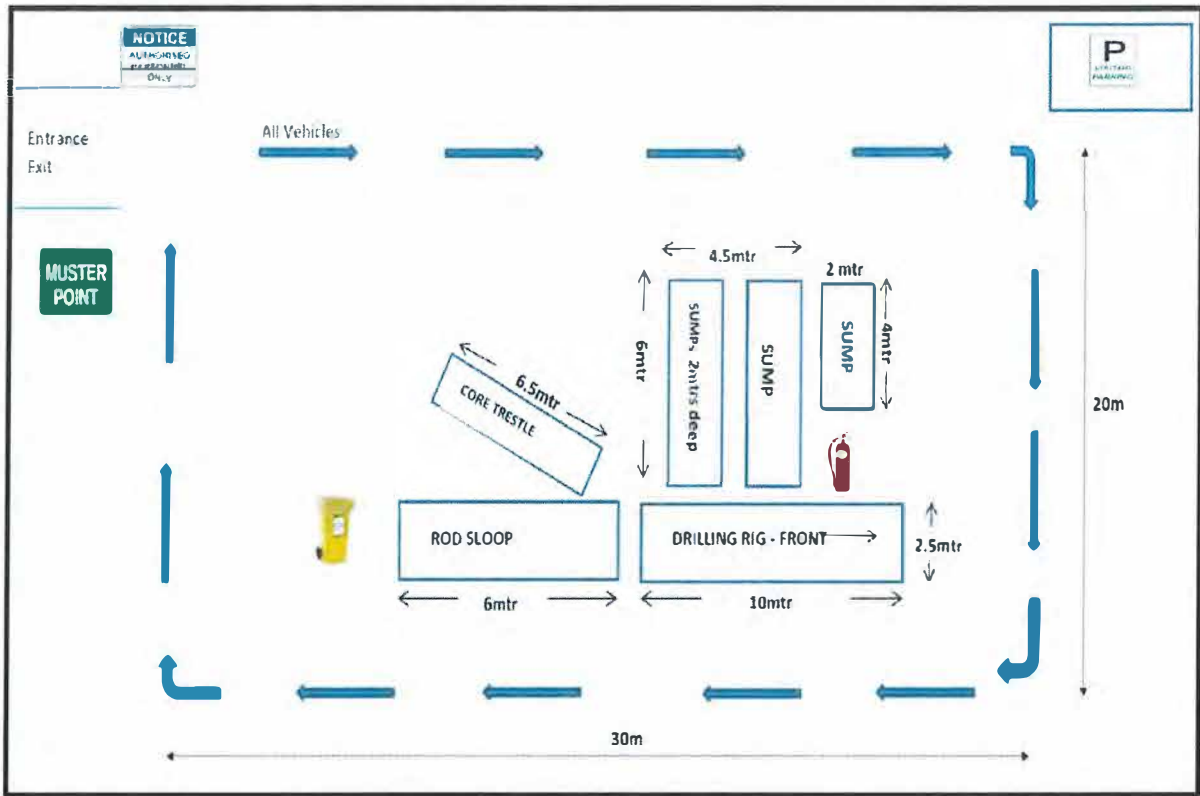


Figure 10: Schematic of Fuel Storage and Laydown Area

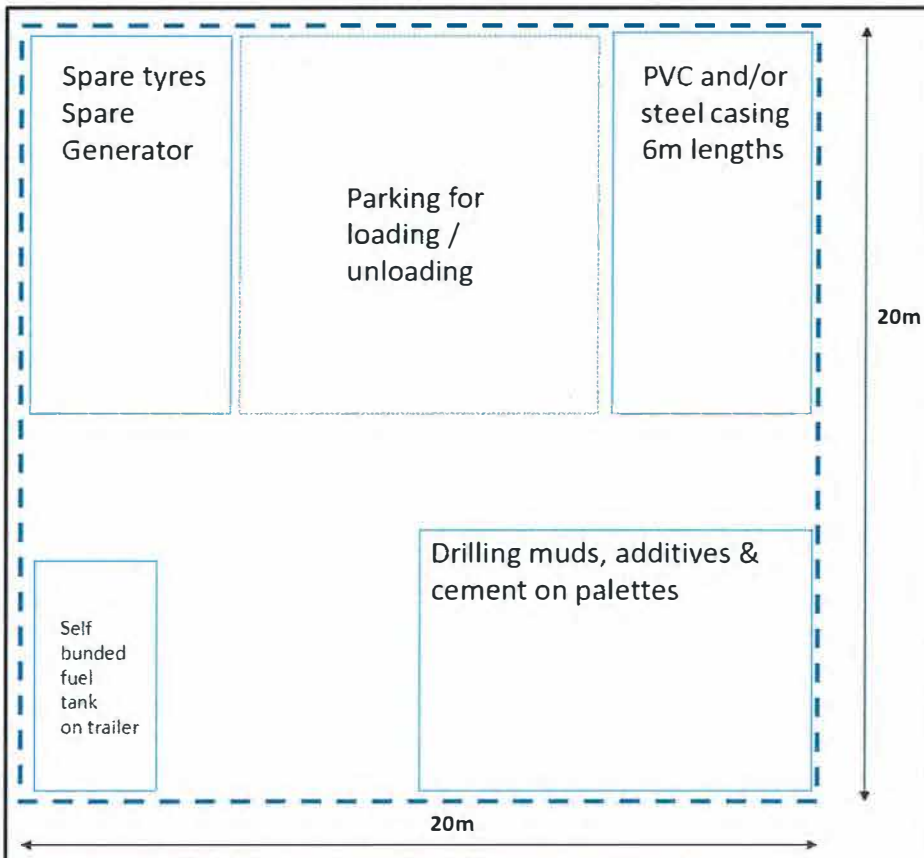


Figure 11: Schematic of Temporary Mobile Campsite

