

SCHOOL TRAFFIC MANAGEMENT PLAN

It's all part of Council's plan



School name:

Upper Mount Gravatt State School

School address:

1899 Logan Road, Upper Mount Gravatt



Dedicated to a better Brisbane



Upper Mount Gravatt State School

Lord Mayor's foreword

We all know schools are busy places and speaking from first-hand experience with young children of my own, I am very focused on the importance of improving safety at schools. Schools, like children, are all different, with specific requirements.

Council's school traffic management plan (TMP) template was created to help schools manage their individual traffic challenges, with more than 160 schools having completed a TMP and now implementing their own strategies for improving safety.

Road safety is of the utmost importance to Council and the feedback received on this initiative is that schools are very positive about having a step-by-step process they can follow to work with Council, address traffic matters and reinforce good road behaviour.

We are happy to assist you with completing the template and, as an added benefit, enhanced loading zone signage will be installed once the plan is finalised.

For further information on TMPs, please visit Council's website at www.brisbane.qld.gov.au or call our 24-hour Contact Centre on 3403 8888.

Thank you for working with Council to create a better Brisbane.



Adrian Schrinner
LORD MAYOR



Overview

About your school

Understanding your school's current environment is the first step in identifying issues and developing a traffic management plan to address them.

Use table 1 to describe your school's environment and understand how this may influence the traffic management conditions and activities around your school.

Traffic management committee or champion

A school's traffic management committee or champion documents existing traffic management arrangements, identifies emerging traffic management issues, and maintains an action plan to address these issues.

Where possible, Council recommends that the core committee consists of a mixture of parents or carers, staff, and possibly members of the student leadership. If there is an existing committee in place, for example a P&C or Active School Travel Committee, your school may wish to use this as the traffic management committee. Alternatively, you may choose to appoint one person as a traffic management champion, rather than establishing a committee.

Tables 2 and 3 can be used to keep track of your committee members, and contains areas where you can monitor when the traffic management plan was last endorsed.

Communication plan

Communicating the school's traffic management arrangements and issues to the school community is critical to ensure everyone, including parents, carers and students, understands the transport options that are available and the rules that need to be followed to ensure they can travel to and from school in a safe and efficient manner.

Depending on the target audiences, schools may often communicate through the school's newsletter, website and social media, or via the school's assemblies. Some may even choose to develop a communication plan to outline when specific messages are communicated to the community.

While there is no specific template for a communication plan, your school may wish to consider the following questions:

- What needs to be communicated?
- Who is the target audience?
- When should it be communicated?
- How will it be communicated?

Table 1: School overview

School Name: Upper Mount Gravatt State School	
Address: 1899 Logan Road, Upper Mount Gravatt QLD 4122	
Grades at the school: Prep - 6	Administration contact: (07) 3421 3111 admin@upmtgravss.eq.edu.au
School population: 514 (as at 30/04/2021)	Expected population in three years' time: 650

Table 2: Traffic management committee

Committee chairperson/champion: Derek Brady
Committee members: Mr Derek Brady

Table 3: Traffic management plan endorsement

Name	Position	Date
Mr Derek Brady	Principal	April 2021

Drop and go (passenger loading) zones

Drop and go zones are designed to act like a flowing taxi rank with a maximum stopping time of two minutes.

Locations

In figure 1, add a map of your school, including the location and number of drop and go zones, and the direction of traffic flow. The location of school buildings, gates and pedestrian crossings may also be marked on the map to help parents, carers and students plan their journey.

Rules

In the interest of safety and the efficient operation of drop and go zones, schools typically have rules that students, parents and carers must follow when using them.

Use table 4 to track your school's rules, and add to them if safety or traffic congestion issues arise. Consider how you can effectively communicate these rules to parents, students and carers to help address illegal parking and queuing.

If your school's drop and go zone is causing traffic congestion problems due to the large number of motorists wishing to access it at the same time, your school may consider staggering pick-up and drop-off times. For example, some schools let different grades start and finish at different times, while others encourage parents and carers to drop off older grades slightly earlier and pick them up later than others. This simple strategy can have a positive impact on road safety and traffic congestion.

Did you know?

Appointing volunteer monitors to drop and go zones helps ensure students are organised and that zones operate in a safe and efficient manner.

If your school has a number of volunteers willing to monitor loading zones, you could look at joining the Department of Transport and Main Roads' Look Out program. Training is provided to volunteers under the program and many schools have achieved significant success, increasing both the turnover rate of vehicles moving through their drop-off and pick-up zones, and the safety of their students.

For more information about the program, please contact the Department of Transport and Main Roads safety advisors on 1300 360 135.

Figure 1: Map of drop and go (passenger loading) zone

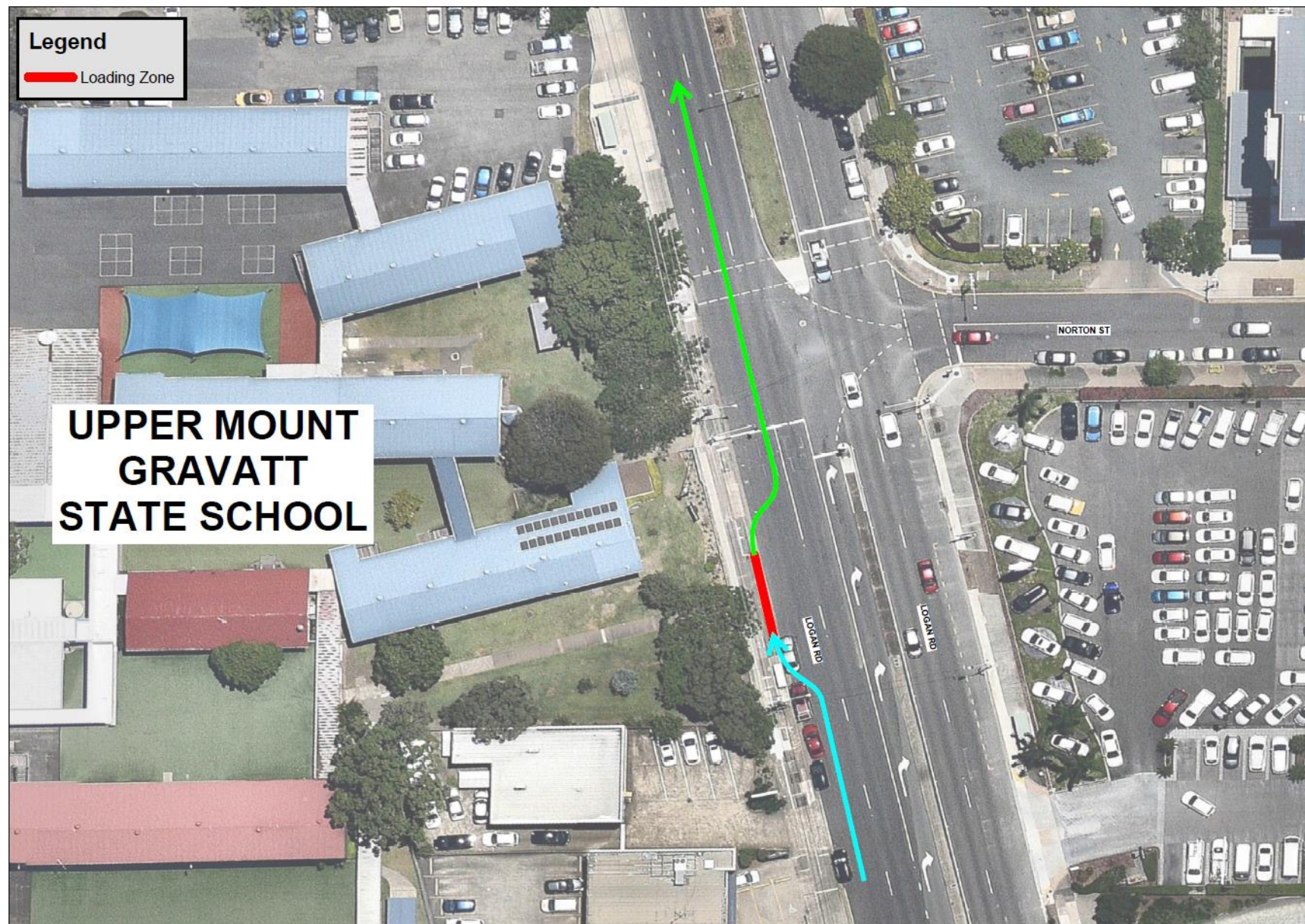


Table 4: Notes and rules for drop and go (passenger loading) zones

LOGAN ROAD LOADING ZONE

It is generally recommended that parents and carers consider parking in parking spaces and walking to collect students, instead of using this loading zone.

Parents and carers are however permitted to stop for up to two minutes if they are dropping off and picking up students. Motorists must stay with their vehicle at all times.

Motorists must listen to any instructions given by loading zone volunteers to ensure the smooth and safe operation of the zone. Motorists who fail to obey instructions and park in an unlawful manner may be reported to Council's Suburban Safety and Parking Control unit.

General Notes

- The school will clearly communicate its expectations with regard to the safe use of the loading zone to all parents on a regular basis.
- The school will also clearly communicate its expectations with regard to compliance with the road rules to all students, parents and staff on a regular basis.

Parking areas

Highlighting the school's available parking areas, especially in streets surrounding the school, can help parents and carers locate longer term parking options to meet their specific needs.

Encouraging parking in these areas can reduce traffic congestion at the school gates and instances of motorists unlawfully parking in other dedicated areas.

Locations

In figure 2, draw or insert a map outlining the location of your school's:

- long-term parking options in streets surrounding the school
- shorter-term parking areas (e.g. 10 minutes)
- staff parking areas
- disability parking spaces
- parking areas for special events (e.g. fetes).

Clearly outlining and promoting these opportunities to parents and carers in an easy format can help to encourage positive behaviours for the benefit of the wider school community.

If you have traffic congestion problems caused by a large number of motorists wishing to access particular parking areas, your school may consider promoting alternative areas to distribute this demand. Some schools promote the use of parking areas which are a short walk (500m) from the school's gates. Not only does this help to alleviate traffic congestion in front of the school, it helps to promote a healthier lifestyle and allows students to develop important road safety skills by walking part of the way to school.

Rules

Schools often have rules that students, parents and carers must follow when parking in particular areas. Table 5 can be used by your school to track your most important parking rules. These rules should be reviewed and updated if safety or traffic congestion problems arise, or as the school grows.

Setting and effectively communicating your school's parking rules to parents, students and carers may help to address the following common problems:

- Illegal parking in designated disability parking spaces.
- Illegal parking across local residents' driveways.
- Illegal parking at intersections.
- Illegal parking across school crossings.
- Unauthorised parking in designated staff parking areas.

Figure 2: Map of parking areas

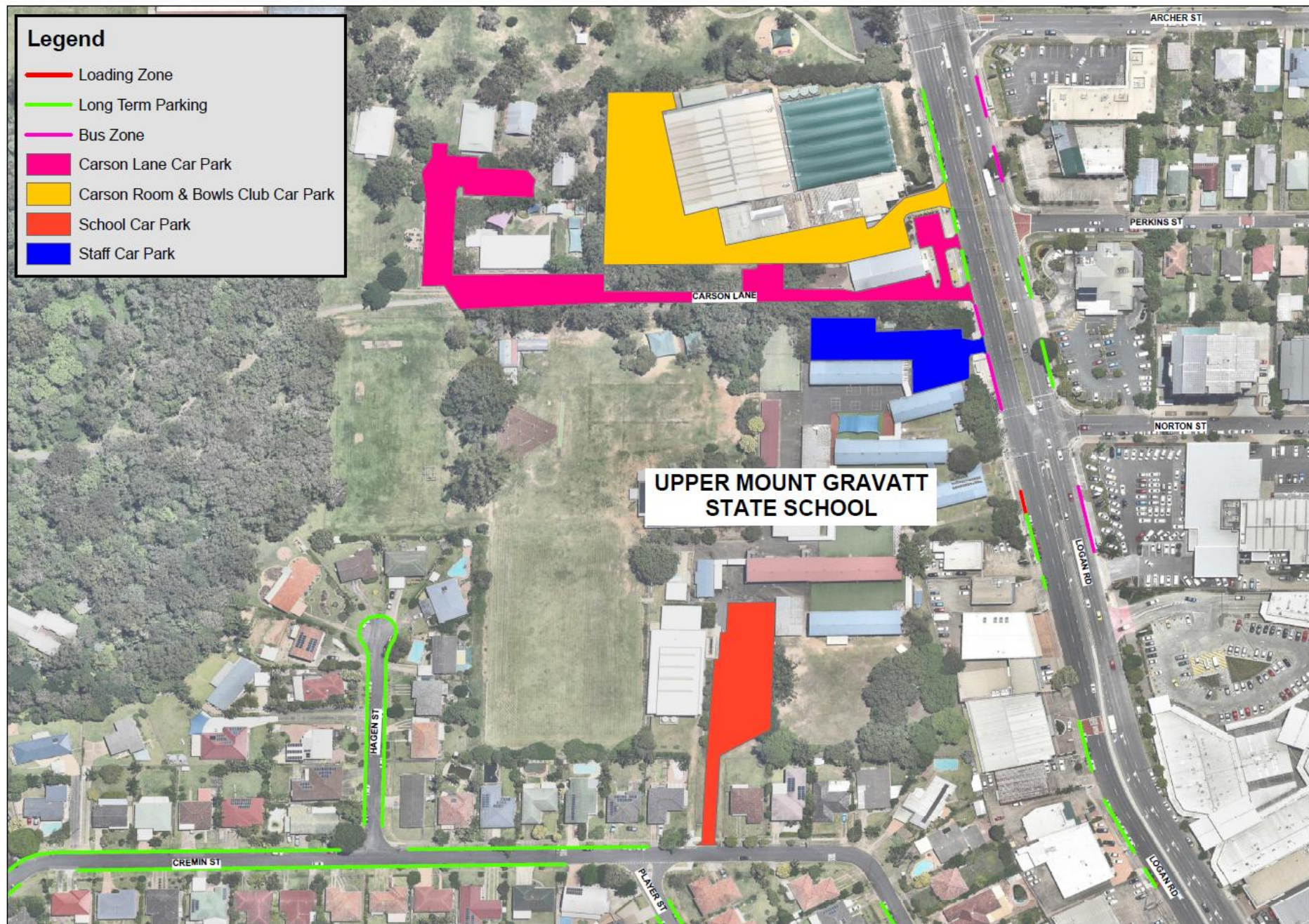


Table 5: Notes and rules for parking areas**LONG TERM PARKING**

Long term all day parking is available in Logan Road. Long term all day parking is also available on other streets within a short walk from the school.

Motorists are reminded to obey and No Stopping conditions that may apply, and not park across resident's driveways, pedestrian crossings or intersections.

STAFF PARKING

Staff parking is available within the school's car park on Carson lane and Cremin Street.

Parents and carers whose children are part of the school's outside of school care program are permitted to use the staff car park on Carson Lane before 7AM and after 3:30PM on school days.

Parents and carers are otherwise not permitted to pick up or set down students within the staff car park.

DELIVERIES

Authorised deliveries are permitted within the school's car park on the school's ground with prior arrangement with the school. Please contact the school's administration to arrange deliveries.

DISABILITY PERMIT PARKING

Disability permit parking is available in the Carson Lane car park.

BUS ZONES

Bus zones are reserved for school and commuter bus services only. Motorists who unlawfully park in these spaces may be reported to Council's Suburban Safety and Parking Compliance team and/or the Queensland Police Service.

Public and active travel

Public transport

Public transport helps to reduce traffic congestion and improve air quality around schools.

Students who learn to use public transport also gain valuable skills for travelling to work and higher education institutions after leaving school.

Students and parents can see what public transport options may be available to them by visiting TransLink's Journey Planner at www.translink.com.au, or by phoning TransLink directly on 13 12 30.

Active travel

Encouraging students to walk, ride or scoot to school, either all or part of the way, not only helps ease traffic congestion and decrease pollution, but also promotes a healthy lifestyle and teaches children valuable road safety skills.

In figure 3, draw or insert a map highlighting where your school's public and active transport infrastructure is located, such as bicycle and scooter parking, suggested cycle and walking routes, as well as bus stops, railway stations and ferry stops.

Did you know?

Australian physical activity guidelines recommend that children get at least 60 minutes of moderate to vigorous activity each day. Walking, cycling or scooting to and from school is an easy way to help kids achieve this. Active travel not only combats increasing levels of obesity and Type II diabetes but also improves bone strength and mental health.

Public and active travel programs and activities

Various organisations have a number of public and active transport travel programs on offer which your school may already have in place, or may wish to take up.

The following list contains some of the more popular programs and activities which Brisbane schools take advantage of:

- Brisbane City Council's Active School Travel Program
- RACQ Streets Ahead Program
- Park and Stride
- Walking School Bus

- Bicycle Train.

Table 6 helps to keep track of the programs and activities on offer at your school. Your school may want to appoint a program coordinator or champion so that interested students, parents and carers can contact them for more information about the program.

For more information about public and active travel programs and activities see appendix A of the example document. Your school may wish also wish to contact Brisbane City Council on (07) 3403 8888, or the Department of Transport and Main Roads' road safety advisors on 1300 360 135 for additional assistance.

Did you know?

Carpooling can be an effective way of reducing the number of vehicles trying to access parking spaces, reducing traffic and parking congestion. Your school may even have other creative strategies to help reduce the demand for parking spaces.

Figure 3: Map of walking and cycling routes, and public transport stops

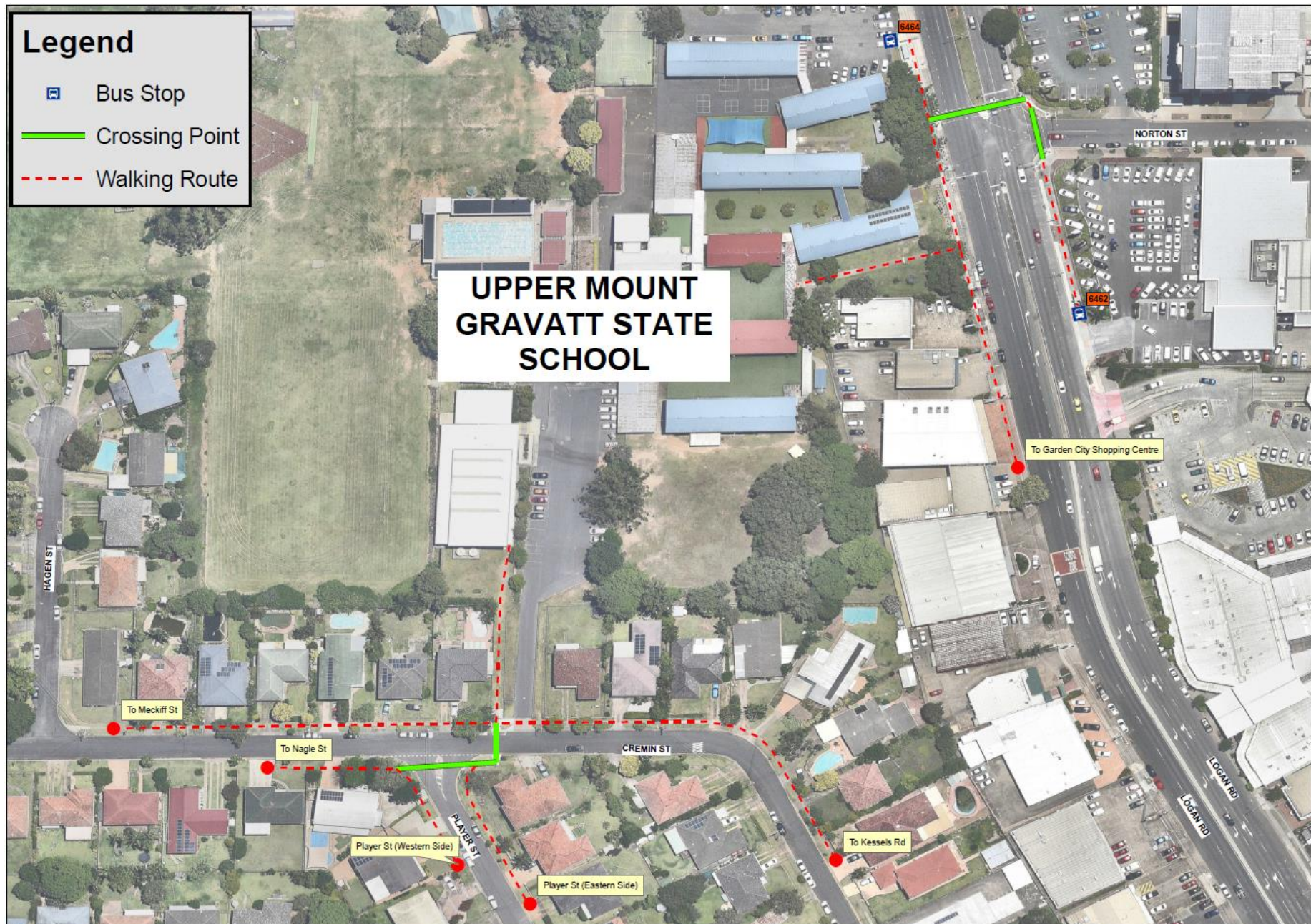


Table 6: Notes and rules for active and public transport

BUS SERVICES

Students are encouraged, where possible, to travel to and from school by bus or train. This helps to reduce traffic congestion at the school's gates and teaches students valuable skills for later in life.

For information about what services are available, students, parents and carers can visit Translink's Journey Planner at www.translink.com.au or contact the school's administration.

The following bus stops are located nearby to the school:

- **STOP 6464** - Logan Rd at Upper Mt Gravatt School - <http://translink.com.au/stop/006464/gtfs/>
- **STOP 6462** - Logan Rd at Kessels Corner - <http://translink.com.au/stop/006462/gtfs/>

The following commuter bus routes service these stops:

- **ROUTE 120** - <https://jp.translink.com.au/plan-your-journey/timetables/bus/t/120>
- **ROUTE 125** - <https://jp.translink.com.au/plan-your-journey/timetables/bus/t/125>
- **ROUTE 172** - <https://jp.translink.com.au/plan-your-journey/timetables/bus/t/172>
- **ROUTE 175** - <https://jp.translink.com.au/plan-your-journey/timetables/bus/t/175>
- **ROUTE 184** - <https://jp.translink.com.au/plan-your-journey/timetables/bus/t/184>
- **ROUTE 599** - <https://jp.translink.com.au/plan-your-journey/timetables/bus/t/599>
- **ROUTE 806** - <https://jp.translink.com.au/plan-your-journey/timetables/bus/t/806>
- **ROUTE 829** - <https://jp.translink.com.au/plan-your-journey/timetables/bus/t/829>
- **ROUTE 870** - <https://jp.translink.com.au/plan-your-journey/timetables/bus/t/870>
- **ROUTE 884** - <https://jp.translink.com.au/plan-your-journey/timetables/bus/t/884>
- **ROUTE 890** - <https://jp.translink.com.au/plan-your-journey/timetables/bus/t/890>
- **ROUTE 892** - <https://jp.translink.com.au/plan-your-journey/timetables/bus/t/892>
- **ROUTE 893** - <https://jp.translink.com.au/plan-your-journey/timetables/bus/t/893>
- **ROUTE 898** - <https://jp.translink.com.au/plan-your-journey/timetables/bus/t/898>
- **ROUTE 8004** - <https://jp.translink.com.au/plan-your-journey/timetables/bus/t/8004>
- **ROUTE 8015** - <https://jp.translink.com.au/plan-your-journey/timetables/bus/t/8015>
- **ROUTE 8031** - <https://jp.translink.com.au/plan-your-journey/timetables/bus/t/8031>
- **ROUTE P176** - <https://jp.translink.com.au/plan-your-journey/timetables/bus/t/P176>

School buses may also service the school and please contact the school's administration.

CROSSING ROADS

Students, parents and carers are asked to cross roads at designated crossing points.

When crossing at **traffic lights**, only commence crossing when the green pedestrian signal is displayed and traffic has come to a complete stop.

When crossing at **children's crossings**, only commence crossing the road when directed by the crossing supervisor.

When crossing at **pedestrian refuges** and **unsignalised intersections**, only commence crossing when there is a suitable gap in traffic. Inexperienced pedestrians should be accompanied by an adult when crossing at these locations.

Developing and implementing your plan

Action plan

Use table 7 to outline your school's plan for addressing its travel management issues. A school's action plan is intended to be a living document and outlines emerging travel management issues your school is actively aiming to address. Your school's traffic management champion or committee should review the progress at pre-arranged meetings.

To plan for future growth and change, your school may proactively implement new programs and activities to mitigate future problems from emerging.

Remember that once you have actioned identified issues in your action plan, you should update the relevant part of this document to make sure it contains the latest rules, initiatives and contact information.

Enforcement

While one of the most effective way of addressing issues at schools is through communicating rules and arrangements to students, parents and carers, there may be times when the school considers it is necessary for enforcement activities to be undertaken to reinforce good behaviours.

Enforcing parking restrictions, speed limits and other road rules can receive a mixed response from your school's community. Your school should therefore clearly define what actions will be taken prior to making a formal request for enforcement, and communicate this to students, parents and carers in advance. This will ensure the school's community is aware of the steps the school has taken prior to making this request, and why it is now considered necessary.

Table 7: Action plan

Date raised	Description	Agreed action	Status
April 2018	Upper Mount Gravatt State School does not have a School Traffic Management Plan	Brisbane City Council has assisted the school to develop a plan.	Complete.
April 2018	Concerns have been raised about the No Stopping restrictions that were recently installed on Cremin Street in front of the school.	Brisbane City Council has advised that these No Stopping restrictions are required to maintain safe visibility at the pedestrian crossing to minimise the risk of crashes involving pedestrians.	Complete.
April 2018	Concerns have been raised about the speed of traffic on Cremin Street in front of the school.	<p>A 40km/h School Zone Speed Limit applies during morning and afternoon school pick up and drop off times. Flashing school zone signs and SCHOOL pavement legends are in place to remind motorists of this reduced speed limit.</p> <p>If motorists are observed speeding or driving in a dangerous manner on Cremin Street, Police ask that they are notified directly on 131 444. When phoning, if details such as the make, model, colour and number plate of the offending vehicle can be provided, this will assist Police with their investigations.</p>	Complete.
April 2018	Concerns have been raised about traffic congestion, commuter parking, parking on the verge, pedestrian safety and traffic speeds on Carson Lane.	<p>School has been working with Brisbane City Council to investigate options.</p> <p>Plan is place for a wombat crossing to be installed linking the Progress Hall and the School Staff Car park in Carson lane.</p> <p>Carson lane is only 'One Way' until the Bowls Club Entry off Carson Lane</p>	Underway.

April 2018	Concerns have been raised about access to parking areas to the south of the school on Cremin Street (and other nearby streets).	<p>Brisbane City Council is currently working on the design for the Player Street connection at Upper Mount Gravatt. This project is an outcome of the Mount Gravatt Corridor Neighbourhood Plan which identifies a new section of road to be built between Pickworth Street and Kessels Road to connect Player Street to MacGregor Street.</p> <p>Updates on this project can be found by visiting Council's Player Street connection webpage at https://www.brisbane.qld.gov.au/traffic-transport/roads-infrastructure-bikeways/current-road-intersection-upgrades/player-street-connection-upper-mount-gravatt</p>	Underway.
April 2018	Concerns have been raised about the configuration of the school's car park that is accessed via Cremin Street.	School to consider discussing options with the Queensland Government's Department of Education's Infrastructure unit (via the regional office) as this car park is located within the school's grounds. The regional office can be contacted on (07) 3028 8052.	Underway.
May 2019	Active Travel Program	The school will be committed to applying for the active travel program when recruitment commences in July 2021	awaiting

Contacts

The following list contains contacts who may be able to provide support to your school. Schools often have other people and organisations which it calls upon for assistance which you could add to this list.

Contact Card		
Name	Phone number	Description
Emergency (Triple Zero)	000	<ul style="list-style-type: none"> Emergency Police, Fire and Ambulance
Queensland Police Service	131 444	<ul style="list-style-type: none"> Speeding and moving vehicle enforcement Theft and property damage
Brisbane City Council	(07) 3403 8888	<ul style="list-style-type: none"> Traffic management plans Parking enforcement Footpath and road maintenance
Councillor Steven Huang MacGregor Ward Office	(07) 3407 8500	<ul style="list-style-type: none"> Brisbane City Council Local Councillor
Department of Transport and Main Roads	1300 360 135	<ul style="list-style-type: none"> Local road safety advisors Crossing supervisor enquiries Drop and go zone monitor training